

Plug-In, Low Noise Active Mixer

UNCL-L1+ UNCL-L1

Level -4 (LO Power -4 dBm) 10 to 500 MHz



CASE STYLE: A01
PRICE: \$28.20 ea. QTY (1-9)

Maximum Ratings

Operating Temperature	-55°C to 100°C
Storage Temperature	-55°C to 100°C
RF Power	50mW
IF Current	40mA

Pin Connections

LO	1
RF	7
IF	8
DC	4
GROUND	3,5,6
CASE GROUND	3,5,6
NOT USED	2

Features

- excellent conversion loss, 5.73 dB typ.
- good L-R isolation, 35 dB typ., L-I isolation, 23 dB typ.
- rugged welded construction
- hermetically sealed
- protected by U.S Patent 6,943,629

Applications

- VHF/UHF
- transmitters

+ RoHS compliant in accordance
with EU Directive (2002/95/EC)

The +Suffix identifies RoHS Compliance. See our web site
for RoHS Compliance methodologies and qualifications.

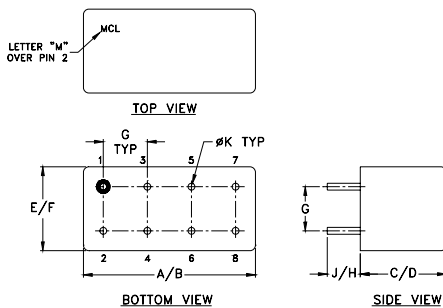
Electrical Specifications

FREQUENCY (MHz)	CONVERSION GAIN (dB)	LO-RF ISOLATION (dB)						LO-IF ISOLATION (dB)						INPUT POWER (dBm) 1 dB Compr.	DC POWER					
		Mid-Band m		Total Range Max.		L	M	U	L	M	U	Typ.	Current mA							
10-500	DC-500	5.73	0.8	8.0	8.5	45	30	35	20	25	17	32	20	23	15	18	12	1	12	35

Up to 1 dBm typ.

L = low range [f_L to $10 f_L$]
M = mid range [$10 f_L$ to $f_U/2$]
U = upper range [$f_U/2$ to f_U]
m = mid band [$2f_L$ to $f_U/2$]

Outline Drawing



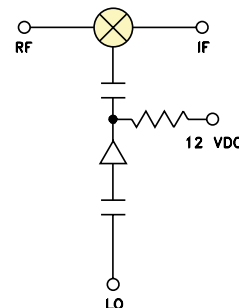
Outline Dimensions (inch/mm)

A	B	C	D	E	F
.770	.800	.385	.400	.370	.400
19.56	20.32	9.78	10.16	9.40	10.16
G	H	J	K	wt	
.200	.20	.14	.031	grams	
5.08	5.08	3.56	0.79	5.2	

Typical Performance Data

Frequency (MHz)	Conversion Loss (dB)	Isolation L-R (dB)	Isolation L-I (dB)	VSWR RF Port (:1)	VSWR LO Port (:1)
10.00	40.00	5.70	62.39	1.11	1.43
20.00	50.00	5.67	57.15	1.07	1.34
50.00	80.00	5.70	49.25	1.06	1.39
53.24	83.24	5.70	48.94	1.06	1.39
96.47	66.47	5.69	44.45	1.05	1.49
100.00	70.00	5.69	44.16	1.06	1.50
139.71	109.71	5.68	42.08	1.07	1.62
182.94	152.94	5.68	39.66	1.09	1.81
200.00	170.00	5.70	38.64	1.10	1.87
226.18	196.18	5.69	37.39	1.11	1.97
240.59	210.59	5.70	37.10	1.13	2.03
250.00	220.00	5.70	36.64	1.13	2.06
269.41	239.41	5.69	35.64	1.14	2.15
312.65	282.65	5.71	34.48	1.17	2.26
355.88	325.88	5.70	33.01	1.21	2.36
399.12	369.12	5.74	32.87	1.25	2.43
442.35	412.35	5.72	32.64	1.30	2.46
471.18	441.18	5.77	30.96	1.34	2.48
485.59	455.59	5.77	30.40	1.36	2.48
500.00	470.00	5.77	29.18	1.38	2.48

Electrical Schematic



Performance Charts

