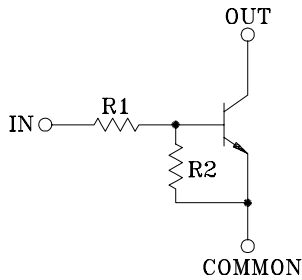


SWITCHING APPLICATION.
INTERFACE CIRCUIT AND DRIVER CIRCUIT APPLICATION

FEATURES

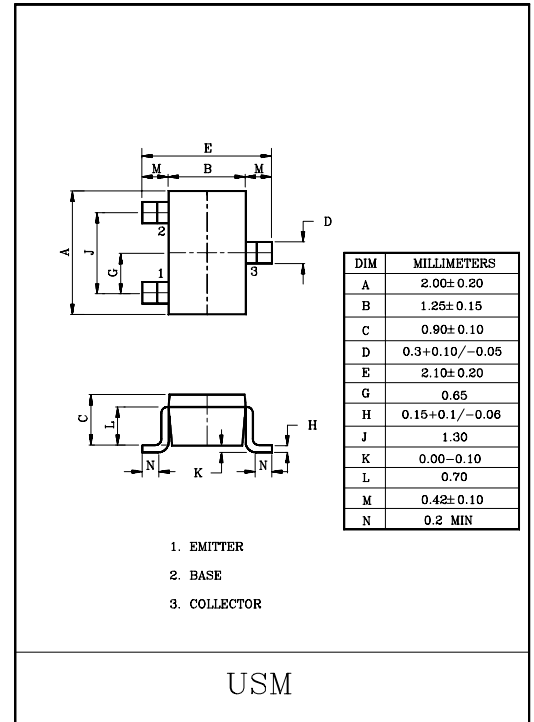
- With Built-in Bias Resistors.
- Simplify Circuit Design.
- Reduce a Quantity of Parts and Manufacturing Process.

EQUIVALENT CIRCUIT



BIAS RESISTOR VALUES

TYPE NO.	R1(k Ω)	R2(k Ω)
KRC416	1	10
KRC417	2.2	2.2
KRC418	2.2	10
KRC419	4.7	10
KRC420	10	4.7
KRC421	47	10
KRC422	100	100

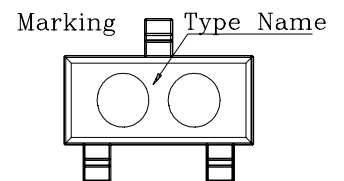


MAXIMUM RATING (Ta=25°C)

CHARACTERISTIC	SYMBOL	RATING	UNIT
Output Voltage	V_o	50	V
		10, -5	
		12, -10	
		12, -5	
		20, -7	
		30, -10	
		40, -15	
		40, -10	
Input Voltage	V_i	40, -10	V
Output Current	I_o	100	mA
Power Dissipation	P_D	100	mW
Junction Temperature	T_j	150	°C
Storage Temperature Range	T_{stg}	-55~150	°C

MARK SPEC

TYPE	KRC416	KRC417	KRC418	KRC419	KRC420	KRC421	KRC422
MARK	N2	N4	N5	N6	N7	N8	N9



KRC416~KRC422

ELECTRICAL CHARACTERISTICS (T_a=25°C)

CHARACTERISTIC		SYMBOL	TEST CONDITION	MIN.	TYP.	MAX.	UNIT
Output Cut-off Current	KRC416~422	I _{O(OFF)}	V _O =50V, V _I =0	-	-	500	nA
DC Current Gain	KRC416	G _I	V _O =5V, I _O =5mA	33	-	-	
	KRC417		V _O =5V, I _O =20mA	20	-	-	
	KRC418		V _O =5V, I _O =10mA	33	-	-	
	KRC419		V _O =5V, I _O =10mA	30	-	-	
	KRC420		V _O =5V, I _O =10mA	24	-	-	
	KRC421		V _O =5V, I _O =5mA	33	-	-	
	KRC422		V _O =5V, I _O =5mA	62	-	-	
Output Voltage	KRC416	V _{O(ON)}	I _O =10mA, I _I =0.5mA	-	-	0.3	V
	KRC417		I _O =10mA, I _I =0.5mA	-	0.1	0.3	
	KRC418		I _O =10mA, I _I =0.5mA	-	-	0.3	
	KRC419		I _O =10mA, I _I =0.5mA	-	0.1	0.3	
	KRC420		I _O =10mA, I _I =0.5mA	-	0.1	0.3	
	KRC421		I _O =10mA, I _I =0.5mA	-	0.1	0.3	
	KRC422		I _O =5mA, I _I =0.25mA	-	0.1	0.3	
Input Voltage (ON)	KRC416	V _{I(ON)}	V _O =0.3V, I _O =20mA	-	0.98	3	V
	KRC417		V _O =0.3V, I _O =20mA	-	1.83	3	
	KRC418		V _O =0.3V, I _O =20mA	-	1.22	3	
	KRC419		V _O =0.3V, I _O =20mA	-	1.76	2.5	
	KRC420		V _O =0.3V, I _O =2mA	-	2	3	
	KRC421		V _O =0.3V, I _O =2mA	-	3.9	5	
	KRC422		V _O =0.3V, I _O =1mA	-	1.64	3	
Input Voltage (OFF)	KRC416	V _{I(OFF)}	V _{CC} =5V, I _O =100μA	0.3	0.63	-	V
	KRC417			0.5	1.15	-	
	KRC418			0.3	0.67	-	
	KRC419			0.3	0.82	-	
	KRC420			0.8	1.68	-	
	KRC421			1	3.09	-	
	KRC422			0.5	1.17	-	
Transition Frequency	KRC416~422	f _T *	V _O =10V, I _O =5mA	-	250	-	MHz
Input Current	KRC416	I _I	V _I =5V	-	-	7.2	mA
	KRC417			-	-	3.8	
	KRC418			-	-	3.8	
	KRC419			-	-	1.8	
	KRC420			-	-	0.88	
	KRC421			-	-	0.16	
	KRC422			-	-	0.15	

Note : *Characteristic of Transistor Only