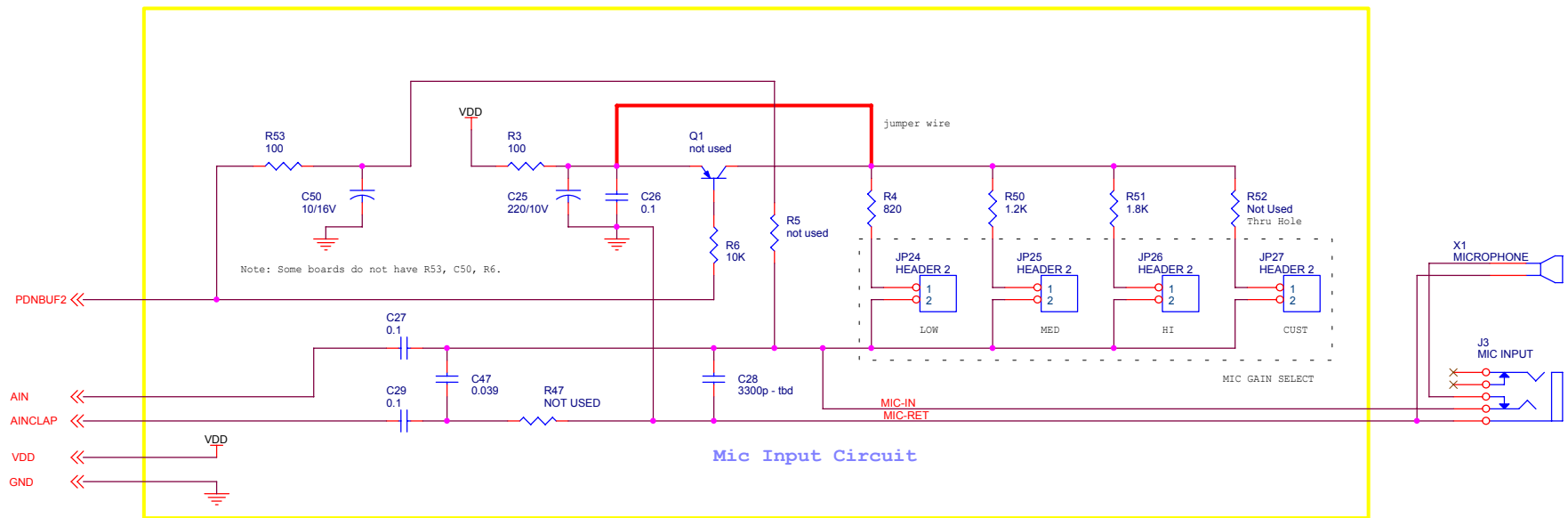


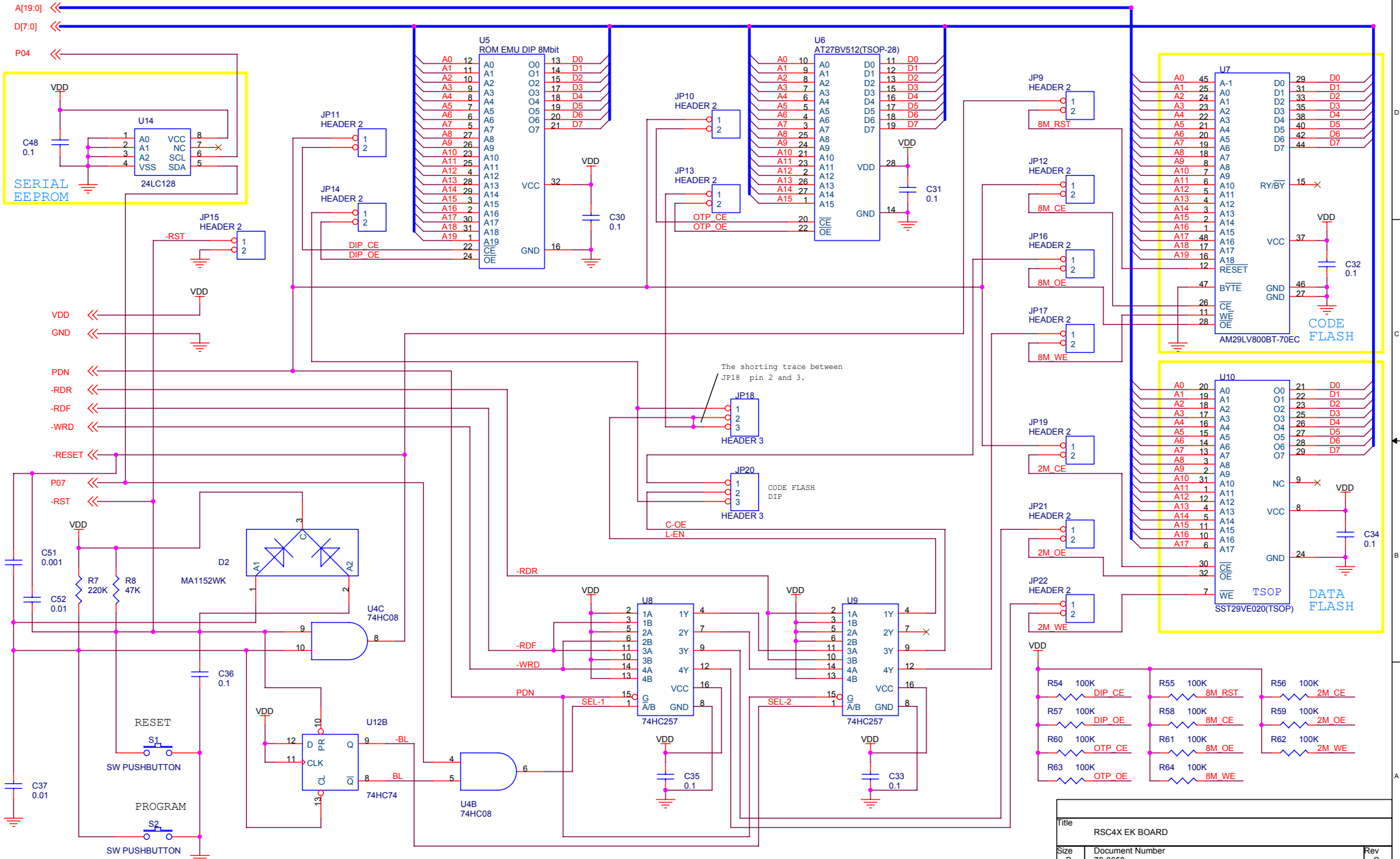
bottom side

Note: For the Target board, U1 (RSC-4000) is replaced with a socket.

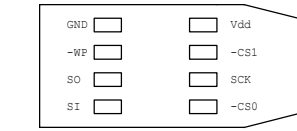
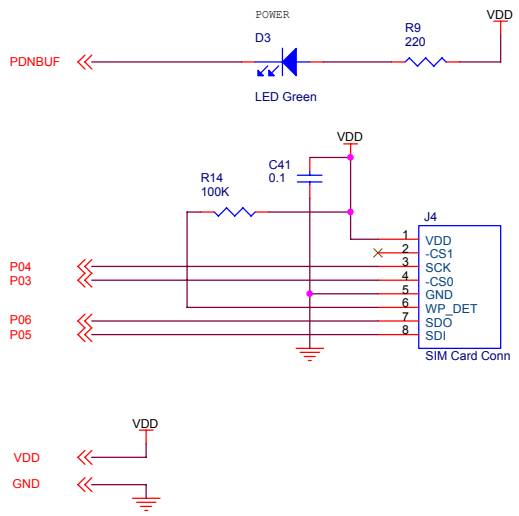
Sensory, Inc.		
Title RSC4XEK BOARD		
Size B	Document Number 70-0058	Rev C
Date: Monday, January 12, 2004	Sheet 1	of 6



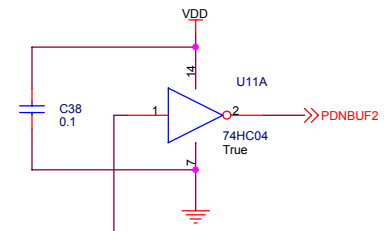
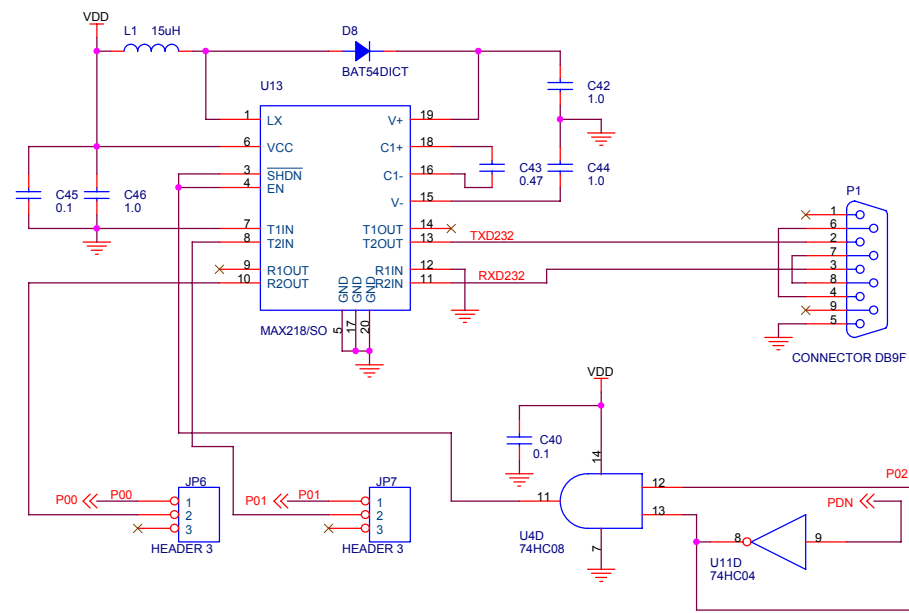
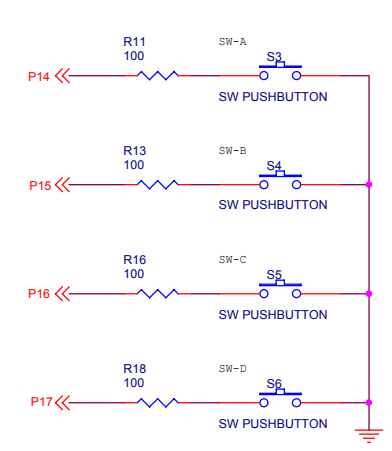
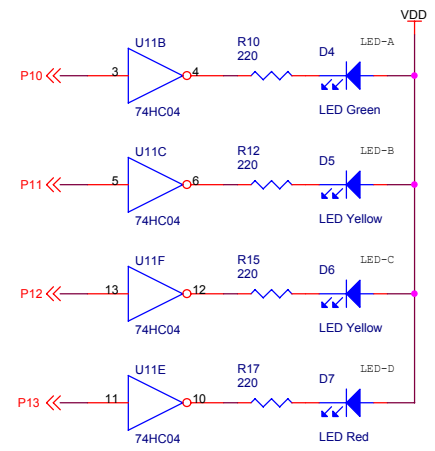
Title		
RSC4XEK BOARD		
Size	Document Number	Rev
B	70-0058	C
Date:	Monday, January 12, 2004	Sheet 2 of 6



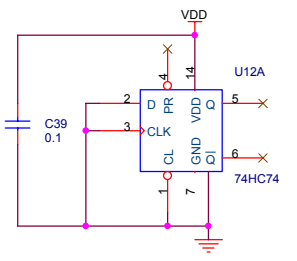
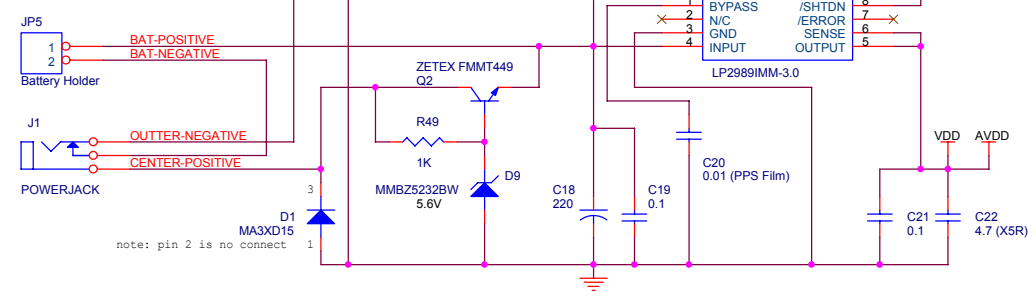
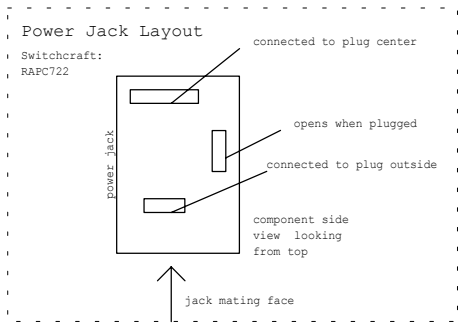
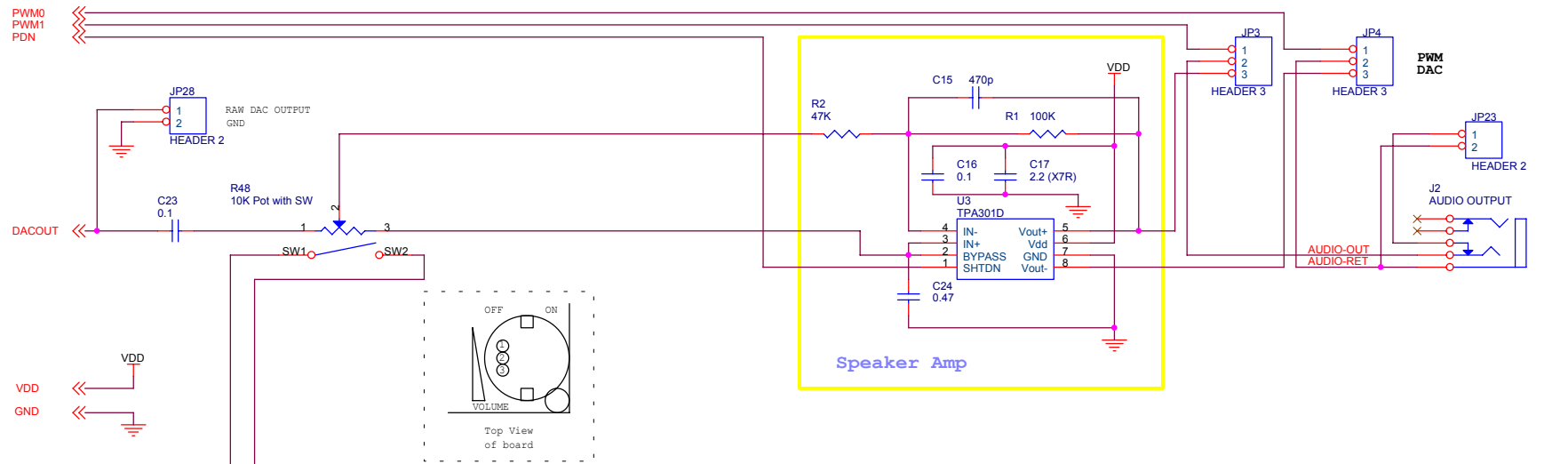
Title		
RSC4X EK BOARD		
Size	Document Number	Rev
B	70-0058	C
Date:	Friday, December 19, 2003	Sheet 3 of 6



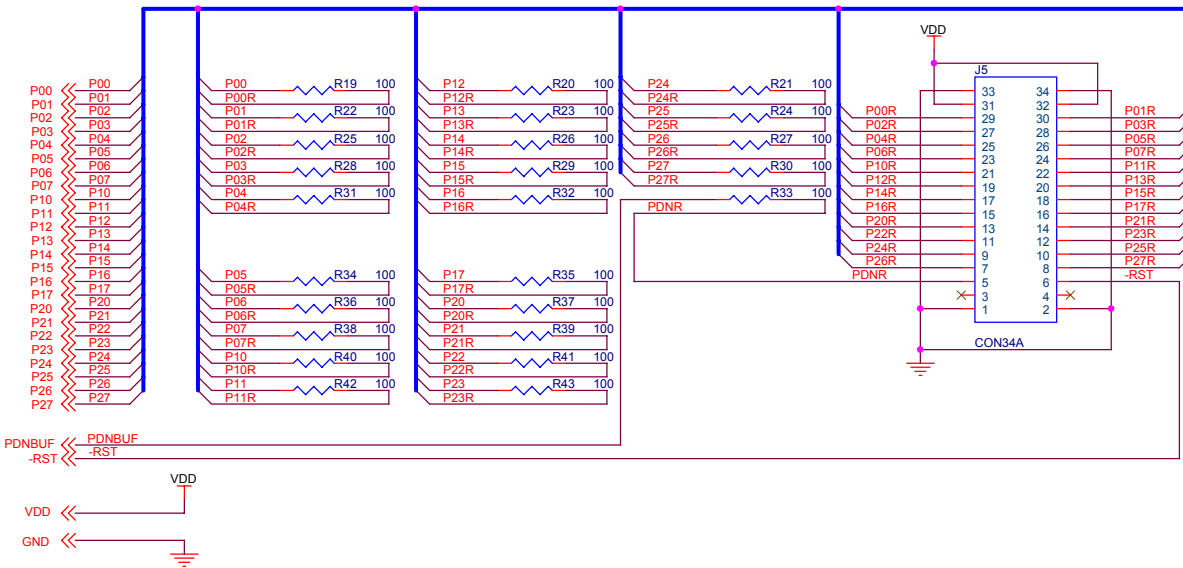
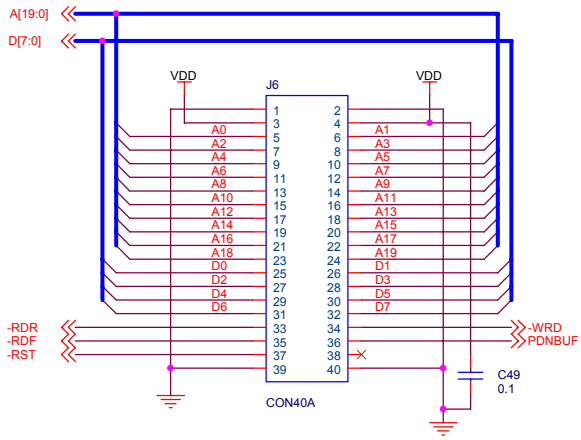
J4: Top view of ITT Cannon Slide-insertion Connector (Model CCM-03-3504).



Title		
RSC4XEK BOARD		
Size	Document Number	Rev
B	70-0058	C
Date:	Friday, December 19, 2003	Sheet 4 of 6



Title		
(Title)		
Size	Document Number	Rev
B	{Doc}	C
Date:	Friday, December 19, 2003	Sheet 5 of 6



Title		
RSC4XEK BOARD		
Size	Document Number	Rev
B	70-0058	C
Date:	Friday, December 19, 2003	Sheet 6 of 6