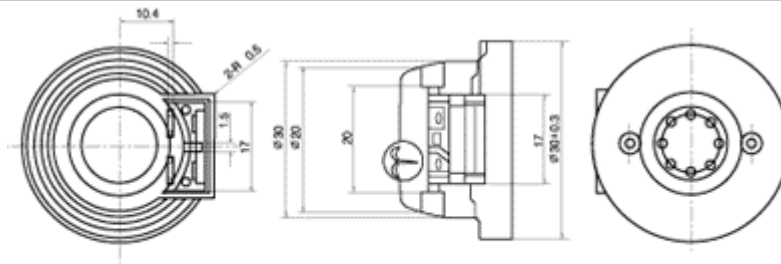




Type	BDR-2
DC Resistance(Ω)	135 \pm 15
AC Impedance(Ω)	150 \pm 30
Sensitivity(dB)	115 \pm 2 at 1mW
Frequency Range(Hz)	200~4000
THD	\leq 3%
Operating Temperature($^{\circ}$ C)	-20~+55
Weight(g)	39



Unit:mm

