

Monolithic crystal filter

MQF10.7-1150/07



Application

- 6 pol filter
- i.f.- filter
- use in mobile and stationary transceivers

Limiting values

		Unit	Value
Center frequency	f_0	MHz	10.7
Insertion loss		dB	≤ 3.0
Pass band at 3.0 dB		kHz	± 5.75
Ripple in pass band	$f_0 \pm 4.00$ kHz	dB	≤ 2.0
Stop band attenuation	$f_0 \pm 25$ kHz	dB	≥ 70
Alternate attenuation		dB	> 80 except spurious
Group delay distortion	$f_0 \pm 5.40$ kHz	μs	< 20

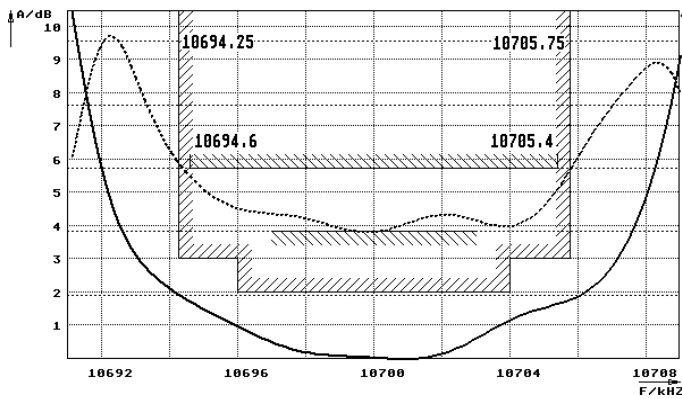
Terminating impedance Z

R1 C1	Ohm/pF	470 15
R2 C2	Ohm/pF	470 15

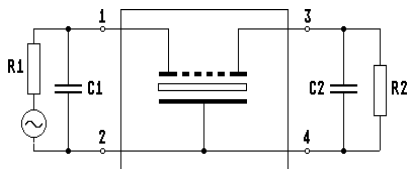
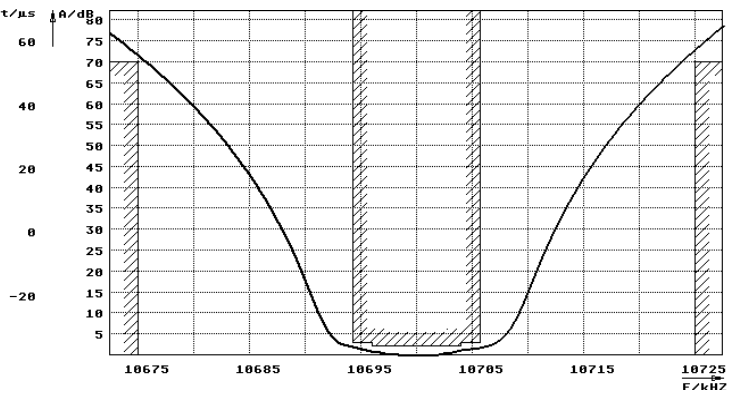
Operating temp. range	$^{\circ}C$	-20... +70
-----------------------	-------------	------------

Characteristics MQF10.7-1150/07

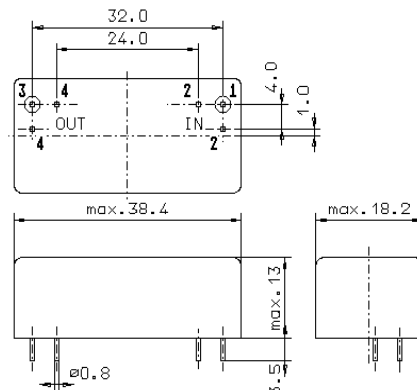
Pass band



Stop band



Pin connections: 1 Input
2 Input-E
3 Output
4 Output-E



GM17