

Monolithic crystal filter

MQF10.7-1500/01



Application

- 2 pol filter
- i.f.- filter
- use in mobile and stationary transceivers

Limiting values

		Unit	Value
Center frequency	f_0	MHz	10.7
Insertion loss		dB	≤ 0.5
Pass band at 3.0 dB		kHz	± 7.50
Ripple in pass band	$f_0 \pm 5.50$ kHz	dB	≤ 1.0
Stop band attenuation	$f_0 \pm 30$ kHz	dB	≥ 20
	$f_0 \pm 150$ kHz	dB	> 40
Alternate attenuation	$f_0 \pm 150 \dots 500$ kHz	dB	> 40

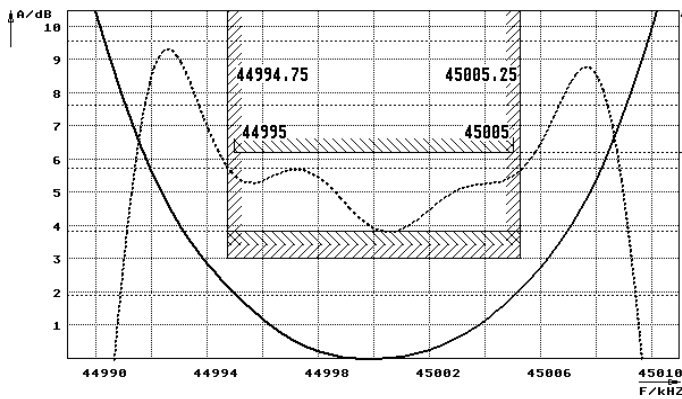
Terminating impedance Z

R1 C1	Ohm/pF	3000 0
R2 C2	Ohm/pF	3000 0

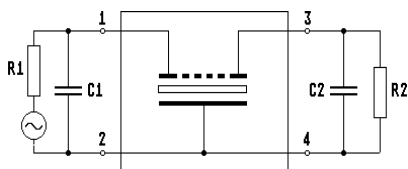
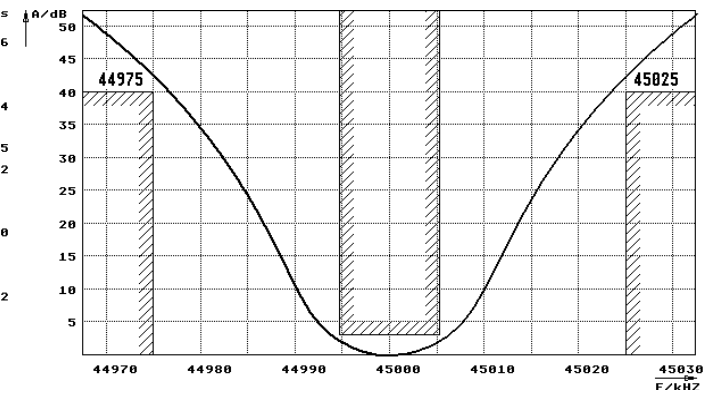
Operating temp. range	$^{\circ}\text{C}$	-25... +70
-----------------------	--------------------	------------

Characteristics MQF10.7-1500/01

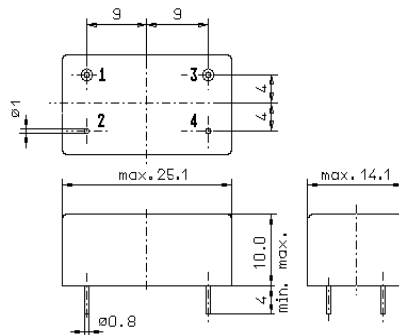
Pass band



Stop band



Pin connections: 1 Input
2 Input-E
3 Output
4 Output-E



GM3