

Monolithic crystal filter

MQF172.5-1200/01



Application

- 2 pol filter
- i.f.- filter
- use in mobile and stationary transceivers

Limiting values

		Unit	Value
Center frequency	f_0	MHz	172.5
Insertion loss		dB	≤ 3.0
Pass band at 1.0 dB		kHz	± 6.00
Ripple in pass band	$f_0 \pm 6.00$ kHz	dB	≤ 1.0
Stop band attenuation	$f_0 \pm 50$ kHz	dB	≥ 20
Alternate attenuation		dB	> 30 except spurious

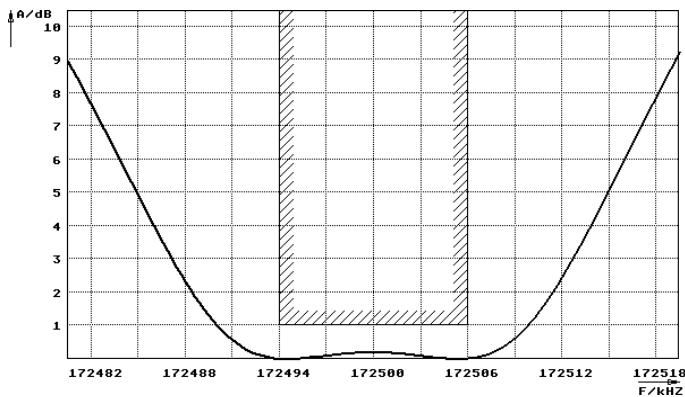
Terminating impedance Z

R1 C1	Ohm/pF	700 -0.70
R2 C2	Ohm/pF	700 -0.70

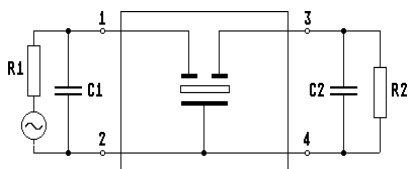
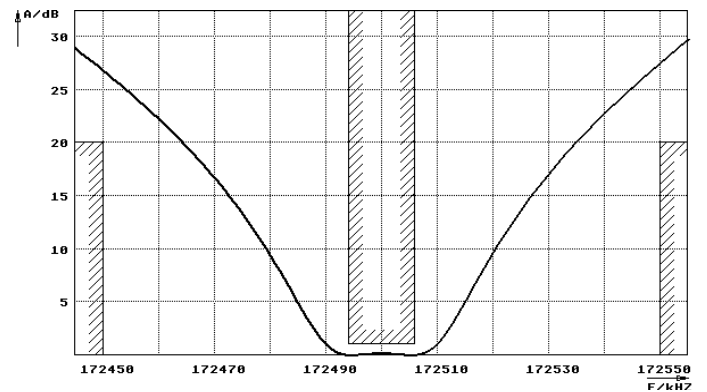
Operating temp. range	$^{\circ}\text{C}$	-20... +70
-----------------------	--------------------	------------

Characteristics MQF172.5-1200/01

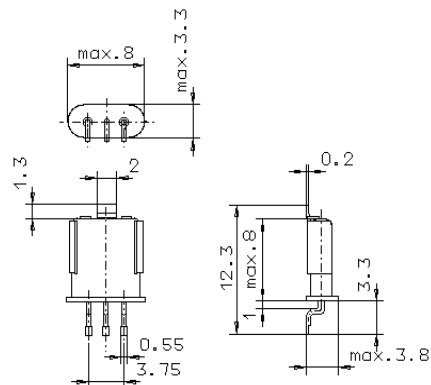
Pass band



Stop band



Pin connections: 1 Input
2 Input-E
3 Output
4 Output-E



GH9/S