

Monolithic crystal filter

MQF21.4-1500/42



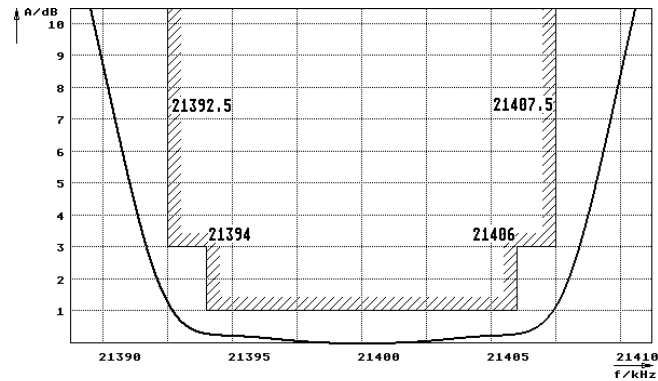
Application

- 4 pol filter
- i.f.- filter
- use in mobile and stationary transceivers

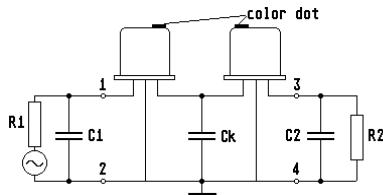
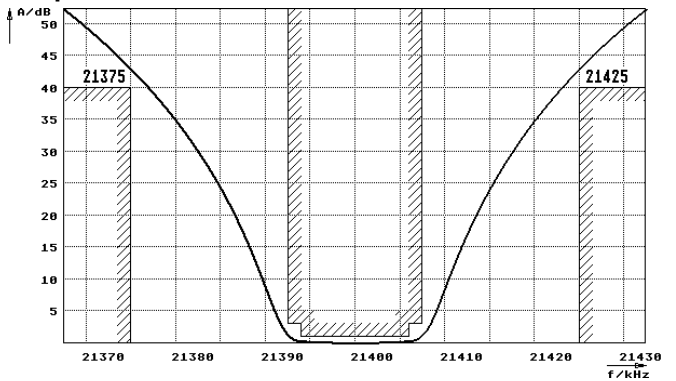
Limiting values		Unit	Value
Center frequency	f_0	MHz	21.4
Insertion loss		dB	≤ 2.5
Pass band at 3.0 dB		kHz	± 7.50
Ripple in pass band	$f_0 \pm 6.00$ kHz	dB	≤ 1.0
Stop band attenuation	$f_0 \pm 25$ kHz	dB	≥ 40
Alternate attenuation	$f_0 \pm 50...500$ kHz	dB	> 60 except spurious >50
Terminating impedance Z			
R1 C1		Ohm/pF	1800 1
R2 C2		Ohm/pF	1800 1
Coupling capacitance	C_k	pF	5.6
Operating temp. range		$^{\circ}\text{C}$	-20... +70

Characteristics MQF21.4-1500/42

Pass band



Stop band



- Pin connections:
- 1 Input
 - 2 Ground-Input
 - 3 Output
 - 4 Ground-Output

