

Ceramic RF Transformer

50Ω 680 to 1050 MHz

New! **TCN1-10+**
TCN1-10



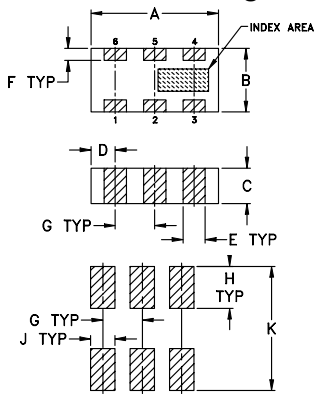
Maximum Ratings

Operating Temperature	-55°C to 100°C
Storage Temperature	-55°C to 100°C
Input RF Power**	5W
** derate linearly to 2.5 W at 100°C	

Pin Connections

PRIMARY DOT	4
PRIMARY(GND)	2,5
SECONDARY DOT	1
SECONDARY	6
NOT USED	3

Outline Drawing



SUGGESTED LAYOUT FOR PCB PATTERN
PATTERN TO BE WITHIN ±.002

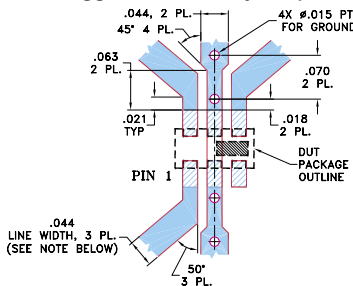
TOLERANCE UNLESS OTHERWISE STATED

2 PLACE DECIMALS: ±.01
3 PLACE DECIMALS: ±.005

Outline Dimensions (inch)

A	B	C	D	E	F	
.126	.063	.037	.024	.022	.012	
3.20	1.60	0.94	0.61	0.56	0.30	
G	H	J	K		wt	
.039	.042	.024	.123		grams	
0.99	1.07	0.61	3.12			.020

Demo Board MCL P/N: TB-287 Suggested PCB Layout (PL-163)



NOTE: TRACE WIDTH IS SHOWN FOR ROGERS RO4350 WITH DIELECTRIC THICKNESS .020 ± .0015. COPPER: 1/2 OZ. EACH SIDE. FOR OTHER MATERIALS TRACE WIDTH MAY NEED TO BE MODIFIED. BOTTOM SIDE OF THE PCB IS CONTINUOUS GROUND PLANE.

- DENOTES PCB COPPER LAYOUT
- DENOTES COPPER LAND PATTERN FREE OF SOLDERMASK

Features

- wideband, 680 to 1050 MHz
- miniature size .12"x.06"x.035
- LTCC construction
- low cost

Applications

- TDMA, CDMA
- GSM
- PDC
- WAN
- TACS
- AMPS, NAMPS

Electrical Specifications (T_{AMB} = 25°C)

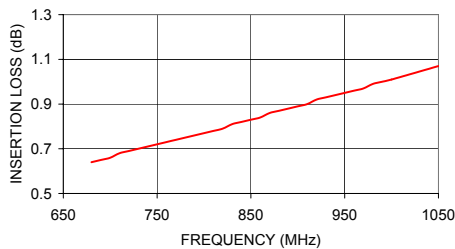
Ω RATIO	FREQUENCY (MHz)	INSERTION* LOSS (dB)	PHASE UNBALANCE (Deg.) Typ.	AMPLITUDE UNBALANCE (dB) Typ.
1	680-1050	0.9	4.0	0.7
	800-900	0.7	1.0	0.25

* Insertion Loss is referenced to mid-band loss, 0.6 dB

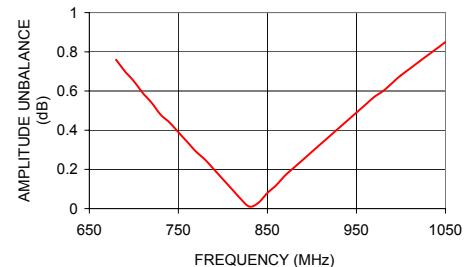
Typical Performance Data

FREQUENCY (MHz)	INSERTION LOSS (dB)	INPUT R. LOSS (dB)	AMPLITUDE UNBALANCE (dB)	PHASE UNBALANCE (deg.)
680.00	0.64	14.50	0.76	6.82
700.00	0.66	14.07	0.65	5.94
750.00	0.72	13.10	0.39	3.94
800.00	0.77	12.43	0.15	2.29
850.00	0.83	11.83	0.08	0.97
900.00	0.89	11.36	0.29	0.23
950.00	0.95	10.99	0.49	1.01
990.00	1.00	10.71	0.64	1.48
1000.00	1.01	10.64	0.68	1.54
1050.00	1.07	10.39	0.85	1.78

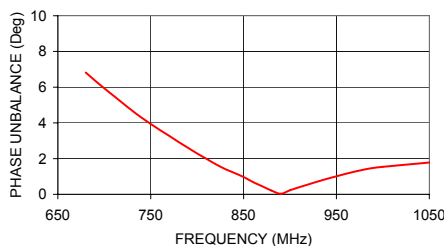
TCN1-10
INSERTION LOSS



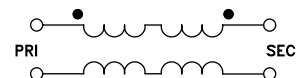
TCN1-10
AMPLITUDE UNBALANCE



TCN1-10
PHASE UNBALANCE



configuration G



Mini-Circuits®

INTERNET <http://www.minicircuits.com>

P.O. Box 350166, Brooklyn, New York 11235-0003 (718) 934-4500 Fax (718) 332-4661

Distribution Centers NORTH AMERICA 800-654-7949 • 417-335-5935 • Fax 417-335-5945 • EUROPE 44-1252-832600 • Fax 44-1252-837010

Mini-Circuits ISO 9001 & ISO 14001 Certified



REV. A
M101913
TCN1-10
ED-11687/1
DJ/RS/CP
051115