

RF IMPEDANCE TRANSFORMER

SURFACE MOUNT MODEL: TM8-GT

WIDE BANDWIDTH

5 - 1000 MHz

FEATURES:

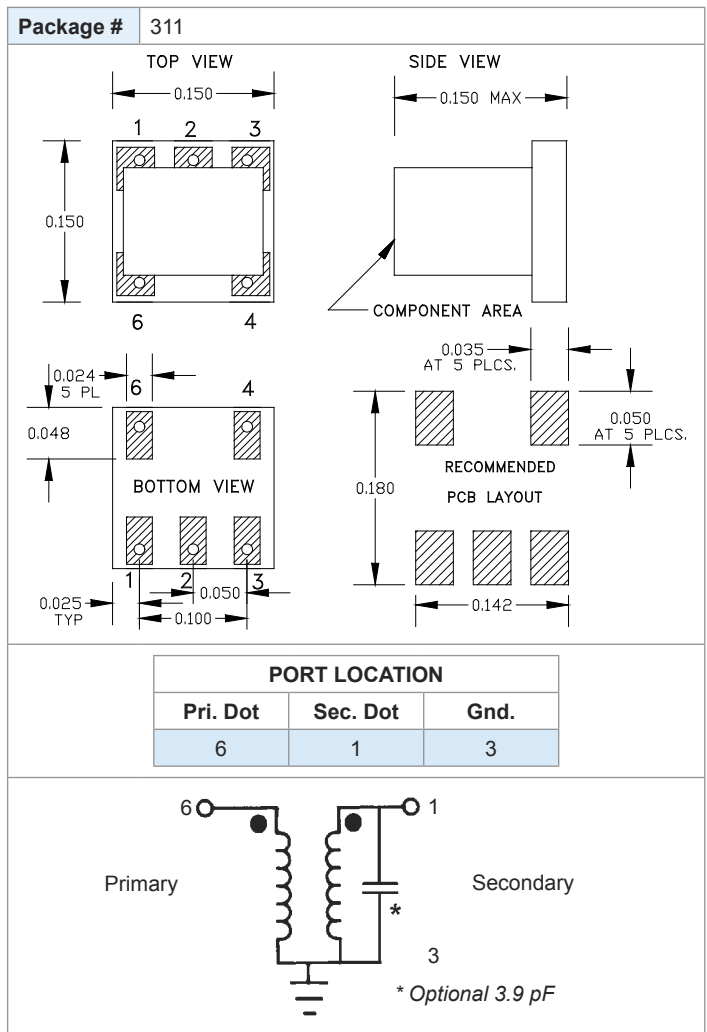
- ▶ Cost Effective
- ▶ Low Loss
- ▶ Small Size, Surface Mount
- ▶ RoHS Compliant
- ▶ Lead Free REL-PRO® Technology



Part Identifier:
Green & Yellow Dot

SPECIFICATIONS (Rev. A 05/14/07)

Frequency	5 - 1000 MHz		
Impedance Ratio	8:1		
Insertion Loss (dB)	Frequency (MHz)	Typ.	Max.
	5 - 50	0.7	1.0
	50 - 500	1.6	2.0
	500 - 1000	1.6	2.2
Return Loss	12 dB (Typ.) *		
Input Power	0.5 Watt (Max.)		
Input Impedance	50 Ohms (Nom.)		
Operating Temperature Range	-40 to +85 °C		
Storage Temperature Range	-55 to +100 °C		
* With optional cap.			



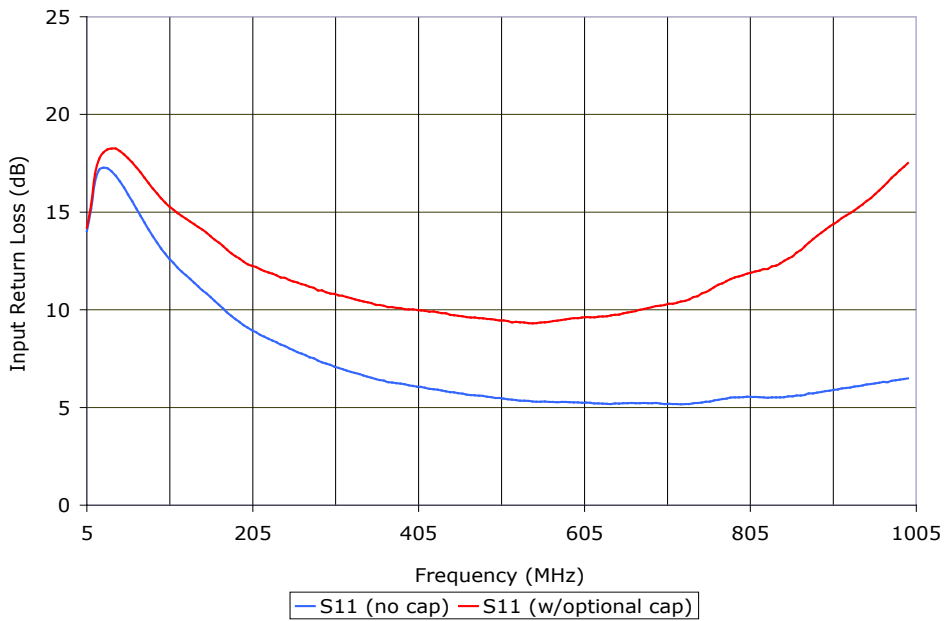
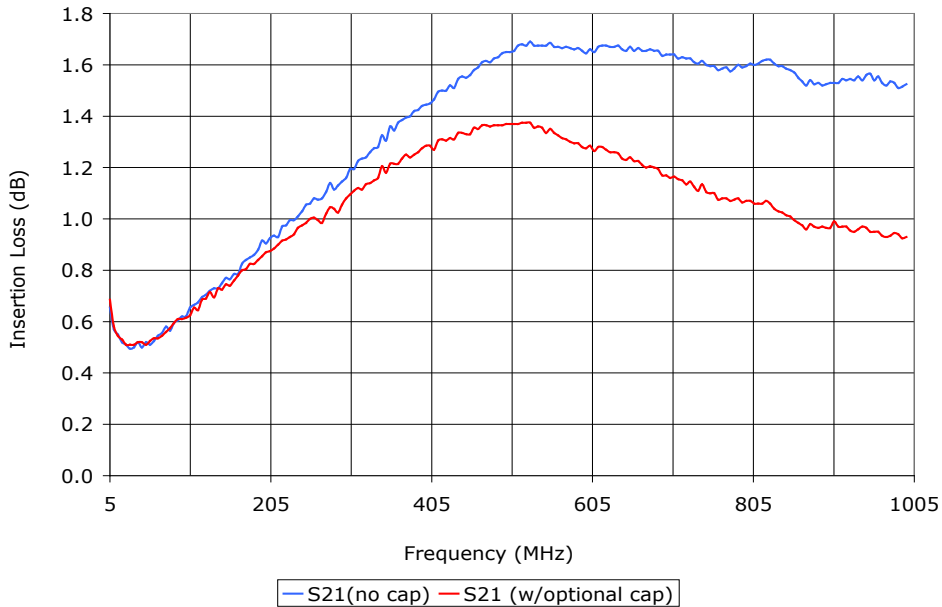
RF IMPEDANCE TRANSFORMER

SURFACE MOUNT MODEL: TM8-GT

WIDE BANDWIDTH

5 - 1000 MHz

Data @ 25°C



PERFORMANCE PLOTS