

## SOT-523 Plastic-Encapsulated Diode

### DA221 SWITCHING DIODE

#### FEATURES:

Power dissipation

$$P_D: 150 \text{ mW (} T_{amb}=25^\circ\text{C)}$$

Collector current

$$I_F: 100 \text{ mA}$$

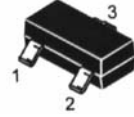
Collector-base voltage

$$V_R: 20 \text{ V}$$

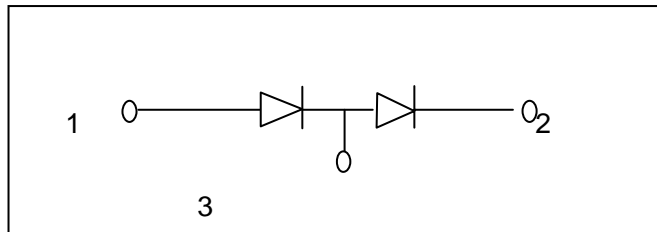
Operating and storage junction temperature range

$$T_J, T_{stg}: -55^\circ\text{C to } +150^\circ\text{C}$$

### SOT-523



#### CIRCUIT:



#### MARKING: K

#### ELECTRICAL CHARACTERISTICS ( $T_{amb}=25^\circ\text{C}$ unless otherwise specified)

Parameter	Symbol	Test conditions	MIN	MAX	UNIT
Reverse breakdown voltage	$V_{(BR)}$	$I_R=100\mu\text{A}$	20		V
Reverse voltage leakage current	$I_R$	$V_R=15\text{V}$		0.1	$\mu\text{A}$
Forward voltage	$V_F$	$I_F=10\text{mA}$		1	V