

# SURFACE MOUNT 406.1 MHz SAW FILTER

AFS406.1W01-TS31



RoHS  
Compliant



3.8 x 3.8 x 1.5 mm

## FEATURES:

- Low Insertion Loss
- Surface Mount Package

## APPLICATIONS:

- RF SAW Filter for Telecommunications

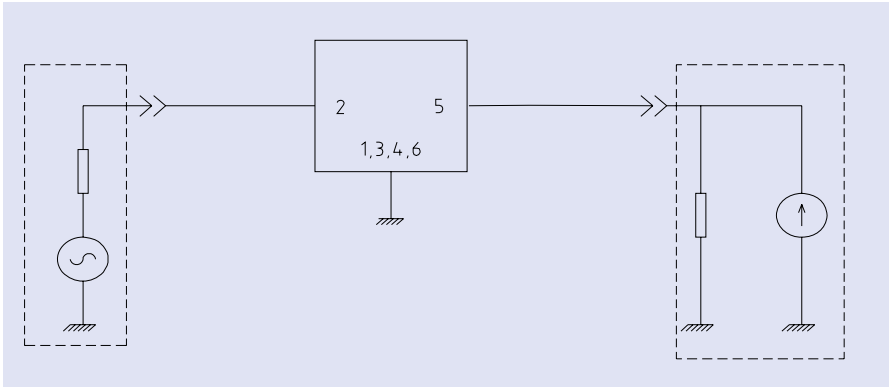
## ELECTRONIC SPECIFICATIONS:

### PARAMETERS

ABRACON P/N: AFS406.1W01-TS31

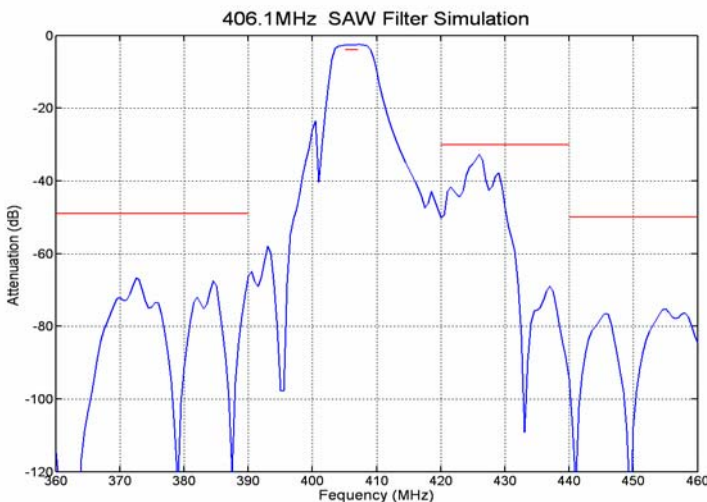
Item	Units	Minimum	Typical	Maximum
Center Frequency Fo	MHz	--	406.1	--
Passband Width	MHz	--	Fo±1.0	--
Insertion Loss (Pass Band)	dB	--	--	4.0
Passband Ripple (Pass Band)	dB	--	--	1.5
Stop Band Attenuation				
	360 ~ 390 MHz	dB	50	--
	420 ~ 440 MHz	dB	30	--
440 ~ 460 MHz	dB	50	--	--
Terminating Impedance	$\Omega$ / pF	--	50 / 0	--

## TEST CIRCUIT:



DC Permissive Voltage:	10Vdc max.
Operating temperature:	-40°C to +125°C
Storage temperature:	-40°C to +85°C
Source Power	0 dBm

## FREQUENCY CHARACTERS:



ABRACON IS  
ISO 9001 / QS 9000  
CERTIFIED



**ABRACON**  
CORPORATION

Visit [www.abracon.com](http://www.abracon.com) for Terms & Conditions of Sale **Revised: 1.14.08**  
30332 Esperanza, Rancho Santa Margarita, California 92688  
tel 949-546-8000 | fax 949-546-8001 | [www.abracon.com](http://www.abracon.com)

# SURFACE MOUNT 406.1 MHz SAW FILTER

AFS406.1W01-TS31

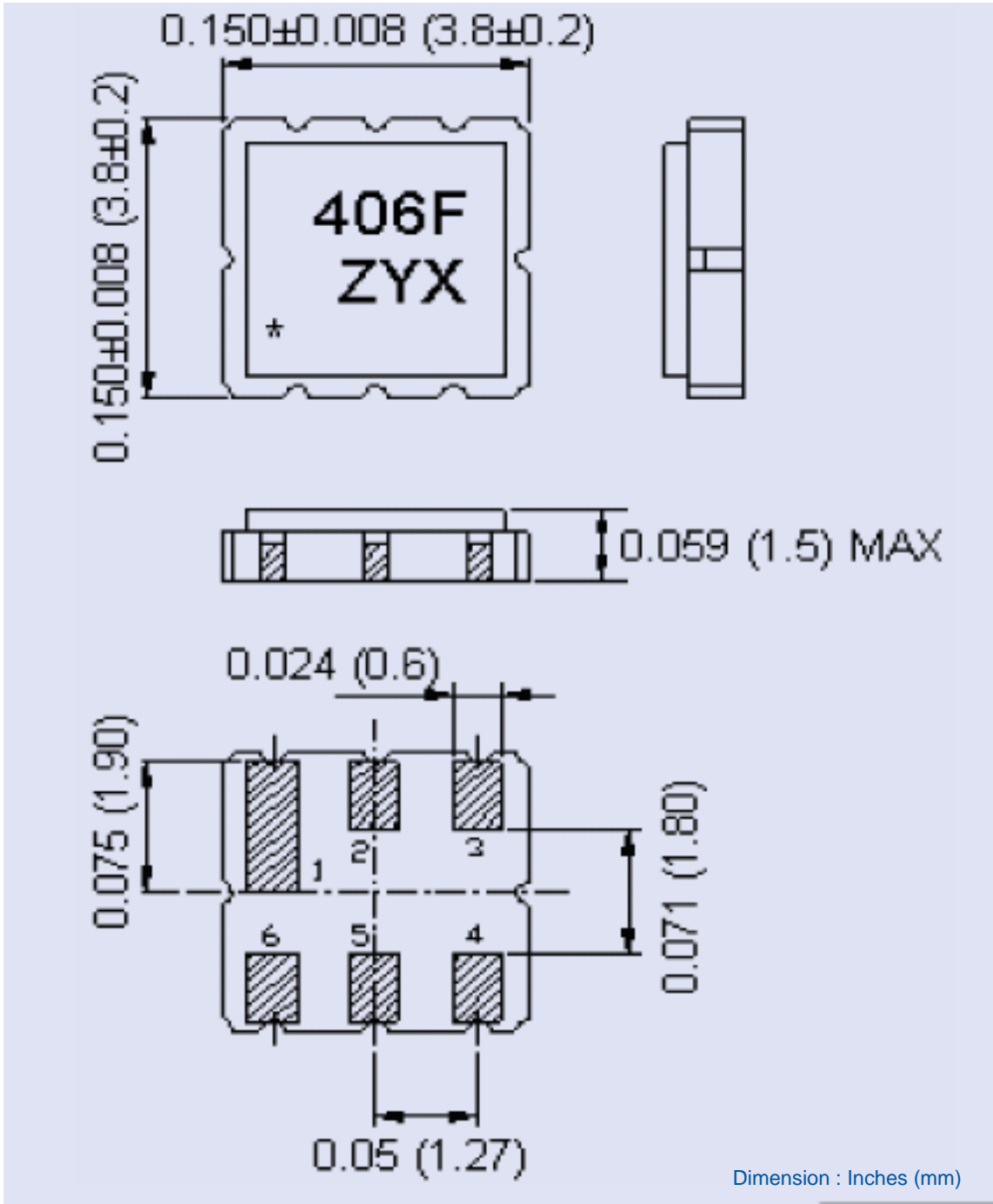


RoHS  
Compliant



3.8 x 3.8 x 1.5 mm

## OUTLINE DIMENSIONS:



Pin#	Function
2	Input
5	Output
Other	Ground

Dimension : Inches (mm)



# SURFACE MOUNT 406.1 MHz SAW FILTER

AFS406.1W01-TS31



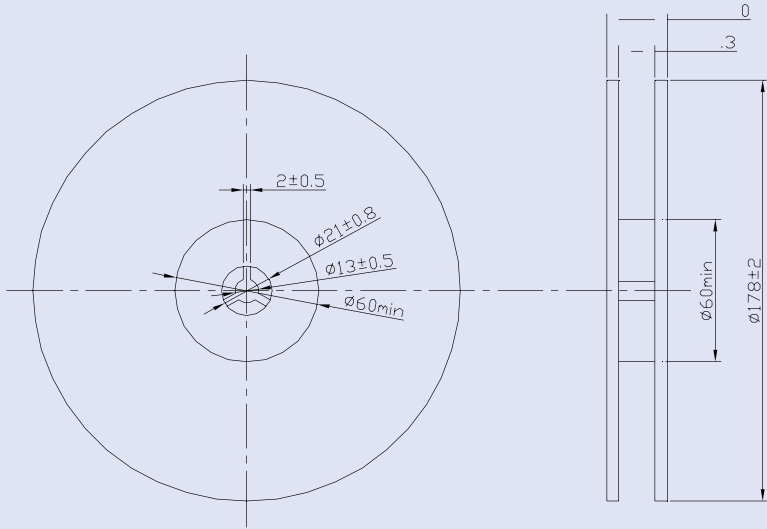
RoHS  
Compliant



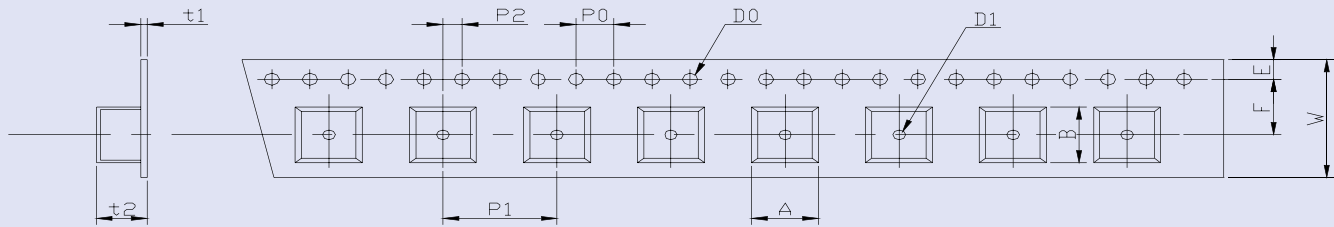
3.8 x 3.8 x 1.5 mm

TAPE & REEL: Tape and reel 1,000pcs/reel

## Reel Dimension

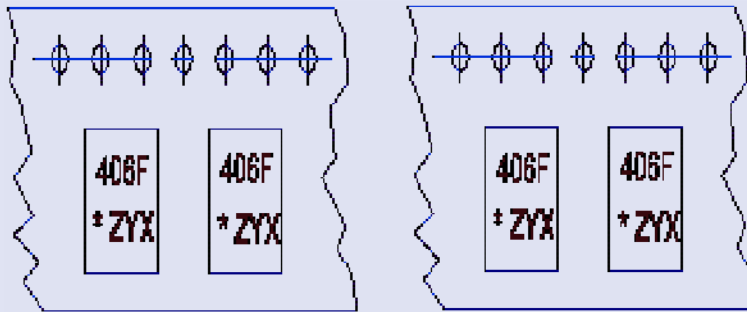


## Tape Dimension



TAPE RUNNING DIRECTION

W	F	E	P0	P1	P2	D0	D1	t1	t2	A	B
12.0	5.5	1.75	4.0	8.0	2.0	φ1.5	φ1.5	0.31	1.95	4.1	4.1
±0.3	±0.1	±0.1	±0.2	±0.1	±0.2	±0.1	±0.25	max.	max.	max.	max.



TAPE WINDING DIRECTION

TAPE WINDING DIRECTION

Dimensions: mm

ABRACON IS  
ISO 9001 / QS 9000  
CERTIFIED



Visit [www.abracon.com](http://www.abracon.com) for Terms & Conditions of Sale **Revised: 1.14.08**  
30332 Esperanza, Rancho Santa Margarita, California 92688  
tel 949-546-8000 | fax 949-546-8001 | [www.abracon.com](http://www.abracon.com)