

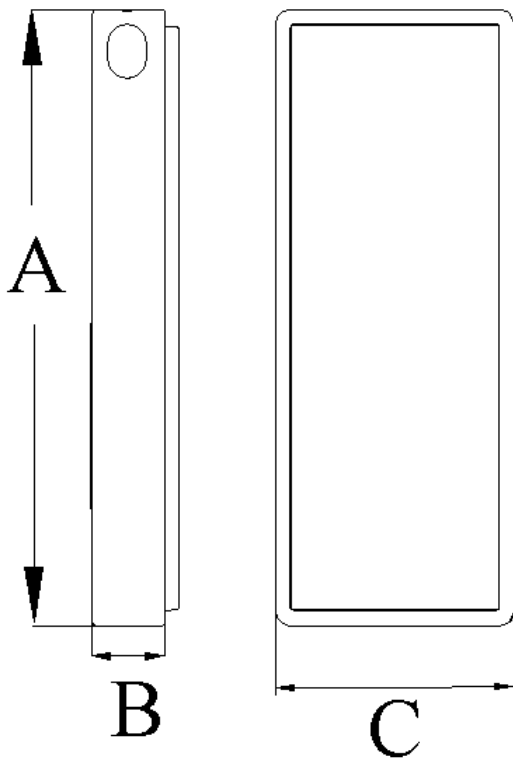
TS4GJFV90C

4GB USB2.0 JetFlash™ V90C

Description

TS4GJFV90C is a 4GB USB Flash Drive with 2pcs of 2Gx8 Flash Memory assembled by chip on board process.

Outline



Features

- USB Interface: Compliant with USB specification 2.0.
- PC-Lock Function: Makes JetFlash™ a key to lock your computer
- Secret-Zip Function: Compress and/or Password protect saved files using AES Encryption
- E-Mail Function: Use your JetFlash™ to Securely Send, Receive and Save e-mails
- AutoLogin Function: Automatically login to websites where you have a password
- Favorites Function: Store all your favorite website addresses on the JetFlash™
- DataBackup Function: Backup, Restore and Synchronize your Data using the JetFlash™
- No external power or battery needed

Dimensions

Side	Millimeters	Inches
A	33.8 ± 0.15	1.33 ± 0.006
B	4.5 ± 0.15	0.18 ± 0.006
C	13.1 ± 0.15	0.52 ± 0.006

TS4GJFV90C

4GB USB2.0 JetFlash™ V90C

Pinouts

Pin No.	Pin Name
01	VCC
02	USB-
03	USB+
04	VSS

Pin Identification

Symbol	Function
USB-	USB differential signal:
USB+	The pairs are used to transmit Data/Address/Command
VSS	Ground
VCC	USB power input

Specifications

Storage Capacity	4GB
Data Retention	10 years
Erase Cycles	>10,000 times
Connector Durability	10,000 times
System Performance	Read: 10MB/sec (max.), Write: 3MB/sec (max.)
Power Supply	DC 5V±10% via the USB port
Temperature Range	Operation: 0-70°C, Non-Operating: -40°C-85°C
Weight	7g
Certificates	CE, FCC, BSMI

TS4GJFV90C

4GB USB2.0 JetFlash™ V90C

Absolute Maximum Ratings

Symbol	Parameter	Rating	Unit
V _{CC}	Power Supply	4.5 to 5.5	V
V _{IN}	Input Voltage	3.0 to 3.6	V

DC Characteristics:

Symbol	Parameter	Min.	Typ.	Max.	Units
I _{IL}	Input Leakage Current (No pull-up or pull-down)	-10		10	μA
I _{OZ}	Tri-State Leakage Current	-10		10	μA
V _{IL}	Input Low Voltage			0.8	V
V _{IH}	Input High Voltage	2.0			V
V _{OL}	Output Low Voltage (I _{OL} =4mA)			0.4	V
V _{OH}	Output High Voltage (I _{OH} =4mA)	2.4			V
R _{pu}	Input pull-up resistance (PU=high, PD=low)	55	75	110	KΩ
R _{pd}	Input pull-down resistance (PU=low, PD=high)	40	75	150	KΩ
I _{ACT}	Active Current			55	mA
I _{SLP}	Sleep Current			120	μA

Recommended Operating Conditions

Symbol	Parameter	Min.	Typ.	Max.	Units
V _{CC}	Power Supply Voltage	4.5	5	5.5	V
V _{IN}	Input Voltage	3	3.3	3.6	V
V _{CC18}	Internal Power Supply	1.62	1.8	1.98	V

Above technical information is based on industry standard data and tested to be reliable. However, Transcend makes no warranty, either expressed or implied, as to its accuracy and assumes no liability in connection with the use of this product. Transcend reserves the right to make changes in specifications at any time without prior notice.