

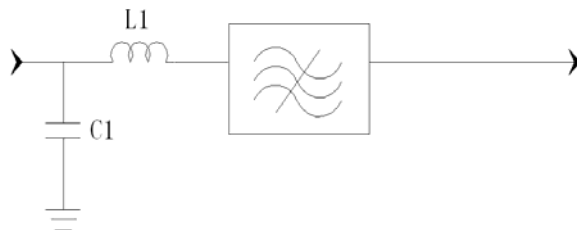
Specifications

Parameter	Unit	Minimum	Typical	Maximum
Center Frequency	MHz	83.45	83.5	83.55
Insertion Loss	dB	-	22.5	24
1 dB Bandwidth	MHz	7.1	7.3	-
3 dB Bandwidth	MHz	7.4	7.6	-
40 dB Bandwidth	MHz	-	9.5	9.7
Passband Variation	dB	-	0.5	1
Group delay variation	nsec	-	4	8
Phase Linearity	Degree	-	60	100
Absolute Delay	usec	-	1.82	-
Ultimate Rejection	dB	50	58	-
Substrate Material		128-LiNbO3		
Ambient Temperature	°C	25		
Package Size		DIP2212 (22.2x12.8x4.7mm ³)		

Notes:


1. All specifications are based on the test circuit shown
2. In production, devices will be tested at room temperature to a guardbanded specification to ensure electrical compliance over temperature
3. Electrical margin has been built into the design to account for the variations due to temperature drift and manufacturing tolerances
4. This is the optimum impedance in order to achieve the performance shown

Matching Configuration

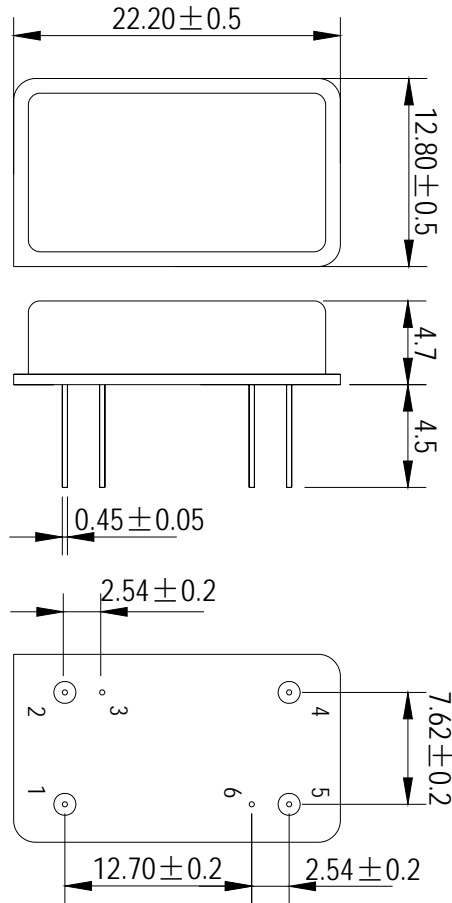


L1=15nH C1=47pF
Source/Load Impedance=50 ohm

Notes - Component values may change depending on board layout.

	SIPAT Co., Ltd. (CETC No. 26 Research Institute) Nanping Huayuan Road No. 14 Chongqing, China, 400060	Part Number	LBN08301	
		Rev. Date	2005-6-9	
		Rev.	1.0	Page

Package Dimension



Input:1
Output:5

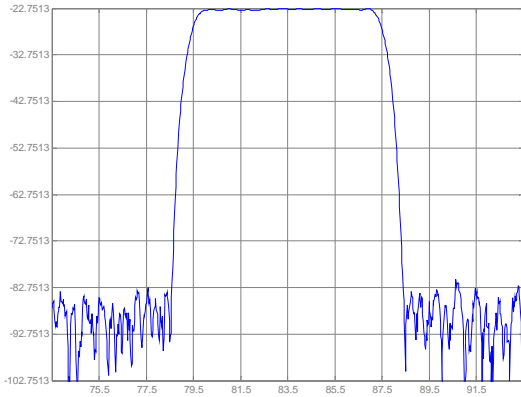


SIPAT Co., Ltd.
(CETC No. 26 Research Institute)
Nanping Huayuan Road No. 14
Chongqing, China, 400060

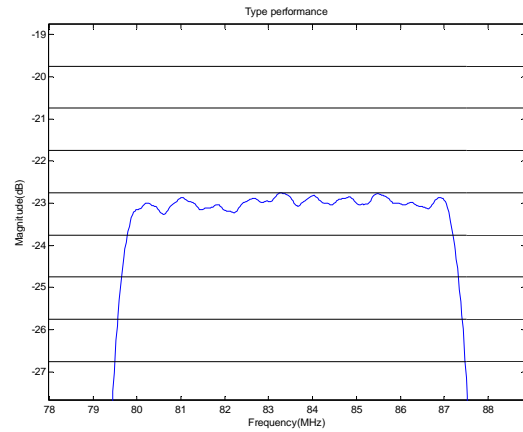
Part Number	LBN08301	
Rev. Date	2005-6-9	
Rev.	1.0	Page 2/3

Typical Performance

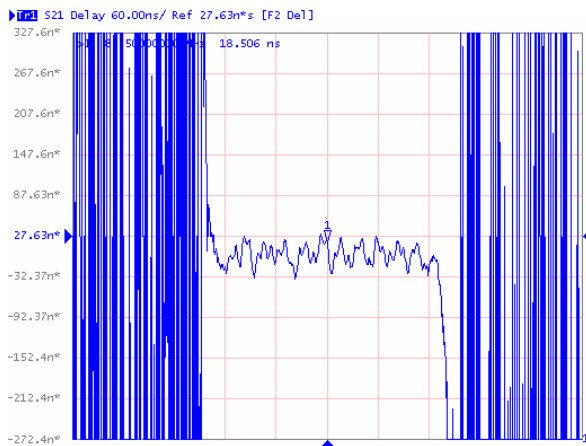
Frequency Respond



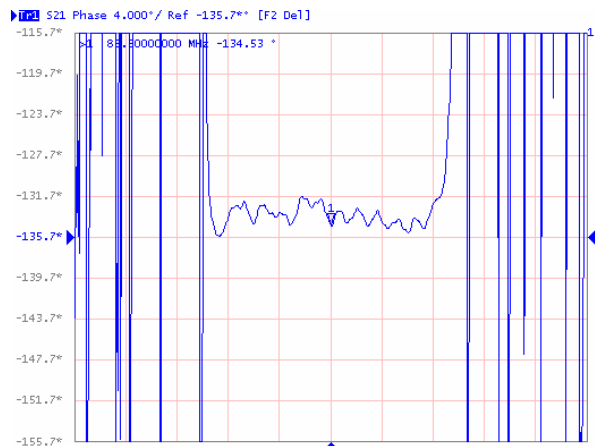
Passband Respond



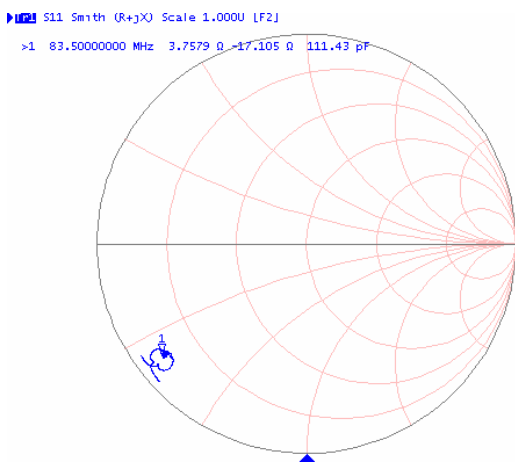
Group Delay Variation



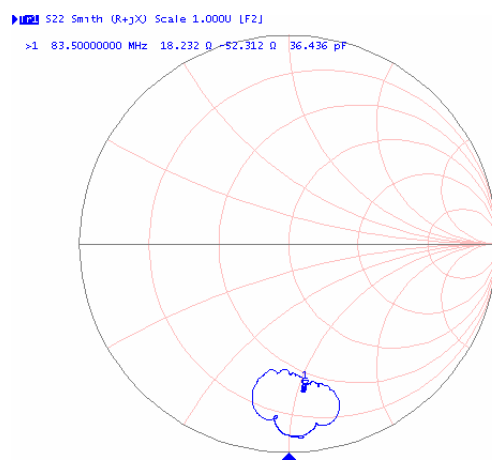
Phase Linearity



Smith Chart S11



Smith Chart S22



SIPAT Co., Ltd.
(CETC No. 26 Research Institute)
Nanping Huayuan Road No. 14
Chongqing, China, 400060

Part Number LBN08301

Rev. Date 2005-6-9

Rev. 1.0

Page 3/3