

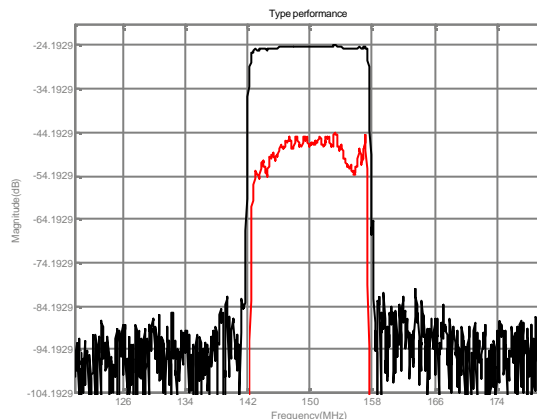


## LBN15004 SAW Filter Electrical Characteristic

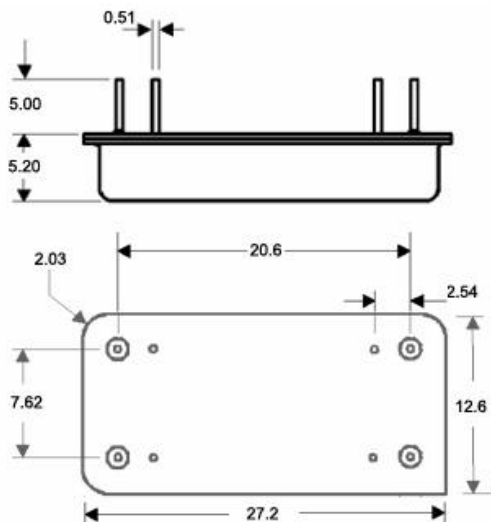
### Specifications

Parameter	Unit	Minimum	Typical	Maximum
<b>Center Frequency</b>	MHz	149.87	150	150.13
<b>Insertion Loss</b>	dB		24.20	25
<b>1 dB Bandwidth</b>	MHz		13.74	
<b>3 dB Bandwidth</b>	MHz	15.00	15.05	
<b>40 dB Bandwidth</b>	MHz		16.06	16.30
<b>50 dB Bandwidth</b>	MHz		16.52	
<b>Passband variation</b>	dB		1.0	1.2
<b>Ultimate Rejection</b>	dB	50	55	
<b>Substrate Material</b>		YZ LN		
<b>Ambient Temperature</b>	°C	25		
<b>Package Size</b>	DIP2712 (27.2x12.6x5.2mm <sup>3</sup> )			

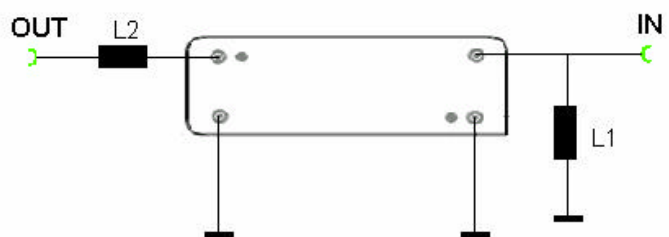
### Typical Performance



### Package Outline



### Matching Configuration



L1=47nH L2=22nH

Source/Load Impedance = 50 ohm