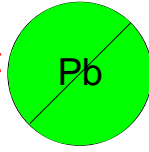


This component is RoHS compliant



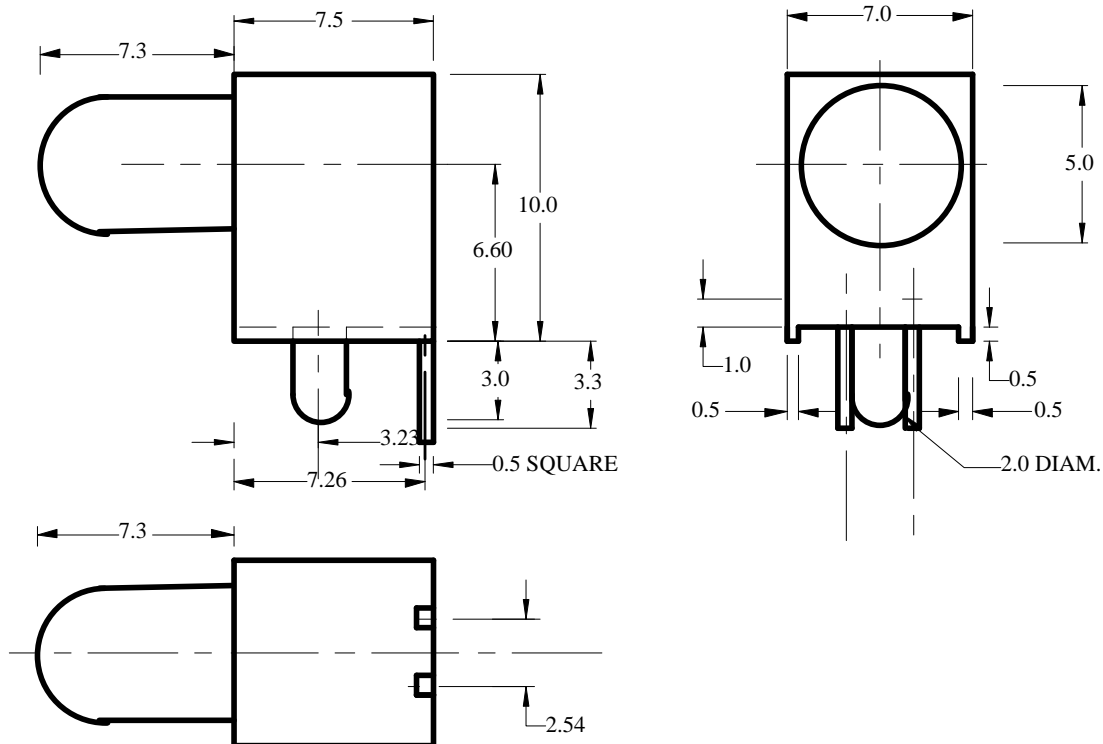
ORE 5005 5mm LED CIRCUIT BOARD INDICATOR

The ORE 5005 is a single 5mm LED assembly for mounting at 90 deg. The housing is moulded in black Nylon 6 with zero flammability rating. The housing will accept standard 2 leaded LEDs with an in-line lead out.



- Long reach from PCB.
- Good alignment
- Single or bi-colour.
- Location Pin .

MECHANICAL DATA



BEDFORD OPTO TECHNOLOGY LTD
1,BIGGAR BUSINESS PARK, BIGGAR, ML12 6FX
Tel: +44 (0) 1899 221221 Fax: +44 (0) 1899 221009
Website: bot.co.uk E-mail: bill@bot.co.uk

ABSOLUTE MAXIMUM RATINGS (Ta = 25°C)

PARAMETER	RED	ORANGE	YELLOW	GREEN
Power Dissipation	60mW	60mW	60mW	75mW
Forward Current	20mA	20mA	20mA	25mA
Peak Forward Current	60mA	60mA	60mA	60mA
Reverse Voltage*	3V	3V	3V	3V
Operating Temperature	-25 to +85°C			
Storage Temperature	-30 to +100°C			
Soldering Temperature	260°C 5 seconds maximum			

* Pulse width 1ms Duty 1/5

ELECTRICAL & OPTICAL CHARACTERISTICS (Ta = 25°C)

PARAMETER & CONDITIONS	RED	ORANGE	YELLOW	GREEN
Forward Voltage [If=10mA]	Typ = 2.0V	Typ = 2.0V	Typ = 2.1V	Typ = 2.1V
Reverse Current [Vr = 3V]	Max = 10µA	Max = 10µA	Max = 10µA	Max = 10µA
Peak Wavelength [If = 10mA]	650nm	610nm	585nm	563nm
Luminous Intensity	Min = 3.6mcd	Min = 3.6mcd	Min = 3.6mcd	Min = 5.6mcd

ORDERING INFORMATION

SINGLE LED - ORE 5005X

Indicate colour by using X =

R = Red

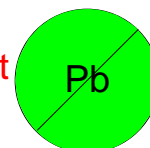
O = Orange

Y = Yellow

G = Green

Other LEDs available on request.

This
component
is RoHS
compliant



BEDFORD OPTO TECHNOLOGY LTD
1, BIGGAR BUSINESS PARK, BIGGAR, ML12 6FX
 Tel: +44 (0) 1899 221221 Fax: +44 (0) 1899 221009
 Website: bot.co.uk E-mail: bill@bot.co.uk