

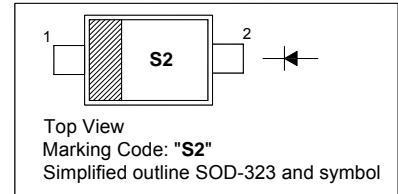
1N6263WS

SILICON SCHOTTKY BARRIER DIODE

for general purpose applications

PINNING

PIN	DESCRIPTION
1	Cathode
2	Anode



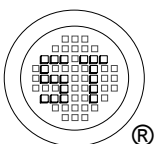
Absolute Maximum Ratings ($T_a = 25\text{ }^\circ\text{C}$)

Parameter	Symbol	Value	Unit
Peak Reverse Voltage	V_{RRM}	40	V
Max. Single Cycle Surge Forward Current (10 s Square wave)	I_{FSM}	2	A
Power Dissipation	P_{tot}	400 ¹⁾	mW
Junction Temperature	T_j	200	$^\circ\text{C}$
Storage Temperature Range	T_s	- 55 to + 200	$^\circ\text{C}$

¹⁾ Valid provided the leads direct at the case are kept at ambient temperature.

Characteristics at $T_a = 25\text{ }^\circ\text{C}$

Parameter	Symbol	Min.	Max.	Unit
Reverse Breakdown Voltage at $I_R = 10\text{ }\mu\text{A}$	$V_{(BR)R}$	40	-	V
Forward Voltage at $I_F = 1\text{ mA}$ at $I_F = 15\text{ mA}$	V_F	- -	0.39 0.9	V
Leakage Current at $V_R = 30\text{ V}$	I_R	-	200	nA
Junction Capacitance at $V_R = 0\text{ V}$, $f = 1\text{ MHz}$	C_{tot}	-	2.2	pF
Reverse Recovery Time at $I_F = I_R = 5\text{ mA}$, Recover to $0.1 I_R$	t_{rr}	-	1	ns



SEMTECH ELECTRONICS LTD.

(Subsidiary of Sino-Tech International Holdings Limited, a company listed on the Hong Kong Stock Exchange, Stock Code: 724)



ISO/TS 16949 : 2002
Certificate No. 05103

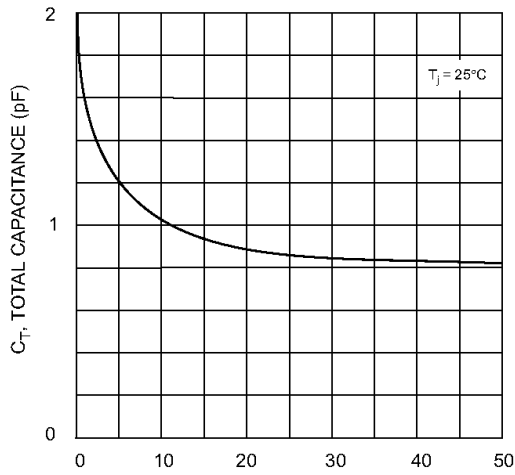


ISO 14001:2004
Certificate No. 7116

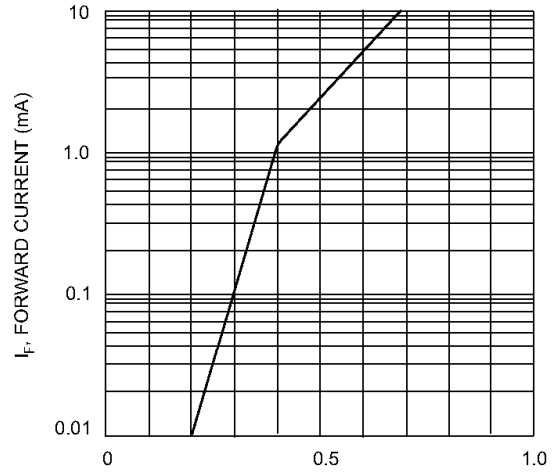


ISO 9001:2000
Certificate No. 0506098

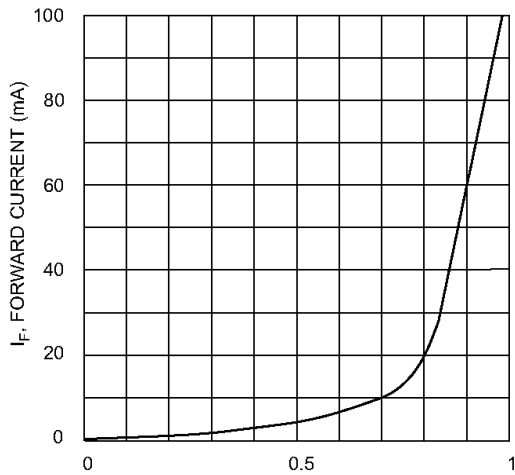
Dated : 01/09/2006



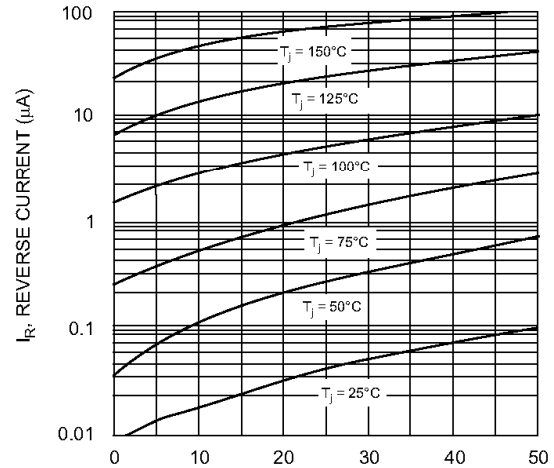
5 Typ. Total Capacitance vs Reverse Voltage



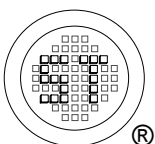
Typical Forward Characteristics



Typical Forward Characteristics



Typical Reverse Characteristics



SEMTECH ELECTRONICS LTD.

(Subsidiary of Sino-Tech International Holdings Limited, a company listed on the Hong Kong Stock Exchange, Stock Code: 724)



ISO/TS 16949 : 2002
Certificate No. 05103



ISO 14001:2004
Certificate No. 7116



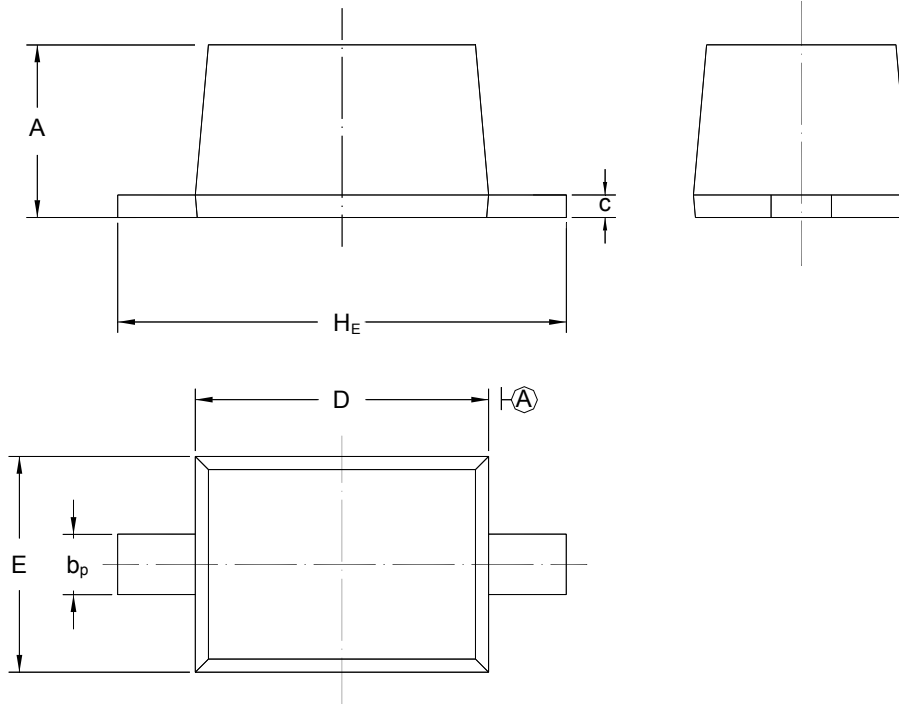
ISO 9001:2000
Certificate No. 0506098

1N6263WS

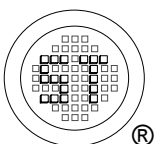
PACKAGE OUTLINE

Plastic surface mounted package; 2 leads

SOD-323



UNIT	A	b _p	C	D	E	H _E
mm	1.10 0.80	0.40 0.25	0.15 0.00	1.80 1.60	1.35 1.15	2.80 2.30



SEMTECH ELECTRONICS LTD.
 (Subsidiary of Sino-Tech International Holdings Limited, a company
 listed on the Hong Kong Stock Exchange, Stock Code: 724)



Dated : 01/09/2006