

DMRF

High attenuation for industrial applications single phase filter

General Specifications

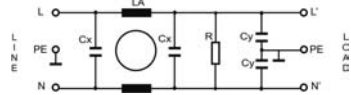
- Maximum operating voltage:
300Vac (520Vac HV models)
- Operating frequency:
DC - 400Hz
- Hipot test voltage:
L/N→PE: 2000 Vac 2s (2700Vdc HV)
L→N: 1100 Vdc 2s (2250Vdc HV)
- Application class:
HMF Acc. TO DIN 40040 (-25°C/+100°C/95% RH, 30d)
- Flammability class:
UL 94 V2
- Protection cat. IP20



Applications

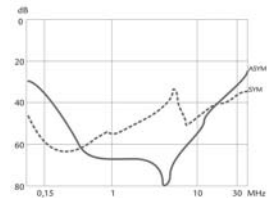
Industrial equipment
High performance power supplies
Frequency converters
Single phase applications rack assembled

Electrical schematics



High attenuation for industrial applications single phase filter.
Optional 35mm rail assembled (DIN models)

8-45A



Insertion Loss ——— ASYM
 - - - - SYM

Product List

Type	Rated Current (A) @ 50 °c	Leakage Current (mA)	Power Losses (W)	Connection	Weight (Kg)	Housing
DMRF-008	8	<3,4	2,6	Terminal block 10 mm ² / AWG 8	0,4	56,58 DIN
DMRF-016	16	<3,4	3,5	Terminal block 10 mm ² / AWG 8	0,6	56,58 DIN
DMRF-025	25	<3,4	5,5	Terminal block 10 mm ² / AWG 8	0,7	57,59 DIN
DMRF-032	32	<3,4	5,6	Terminal block 10 mm ² / AWG 8	0,8	57,59 DIN
DMRF-045	45	<3,4	7,4	Terminal block 10 mm ² / AWG 8	0,8	57,59 DIN
DMRF-008HV	8	<3,4	2,6	Terminal block 10 mm ² / AWG 8	0,5	56,58 DIN
DMRF-016HV	16	<3,4	3,5	Terminal block 10 mm ² / AWG 8	0,7	56,58 DIN
DMRF-025HV	25	<3,4	5,5	Terminal block 10 mm ² / AWG 8	0,8	57,59 DIN
DMRF-032HV	32	<3,4	5,6	Terminal block 10 mm ² / AWG 8	0,9	57,59 DIN
DMRF-045HV	45	<3,4	7,4	Terminal block 10 mm ² / AWG 8	0,9	57,59 DIN