

75 Ω SMB Type Connectors



- 27CP series are connectors for 75 Ω group of 27DP series (50 Ω group).
- Typical small size 75 Ω connectors useful for interface within equipment.
- Provides easy push-pull coupling mechanism.
- 27DP series is not intermateable with.
- Useful for interface of test instrument, broadcasting equipment, CATV and HDTV, etc.

SPECIFICATION

Characteristic Impedance	75 Ω
Dielectric withstanding voltage	1000V AC (rms) for 1 minute
Insulation resistance	1000M Ω min. at 500V DC
Contact resistance	6m Ω max.
VSWR	1.5max. at DC~500MHz

Specifications depends on each connector although these are basic specifications.

MATERIAL/FINISH

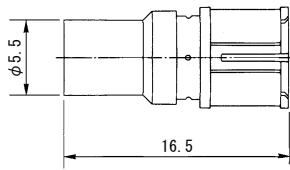
Shell (Body)	Copper alloy/Gold or Nickel plating
Contact (male)	Copper alloy/Gold plating
Contact (female)	Copper alloy/Gold plating
Insulators	PTFE

Please ask us for the cable assemblies to assure its performance.

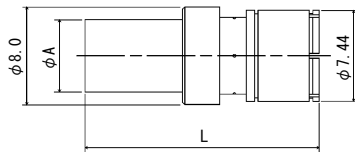
27CP Series

Unit : mm

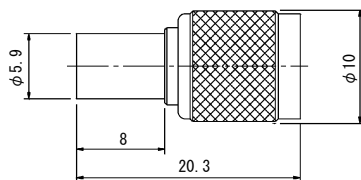
■ Plug



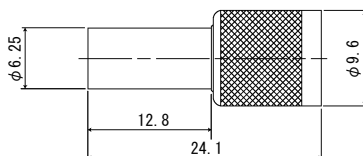
P/N	Applicable Cable	Finish		Hand Crimp Tool P/N
		Shell	Contact	
27CP-P-1.5	1.5C-2V	Ni	Au	CR-H-1100
27CP-P-1.5W	1.5C-2W	Ni	Au	CR-H-1100
27CP-P-2.5	2.5C-2V	Ni	Au	CR-H-1100



P/N	Applicable Cable	φ A	L	Finish		Hand Crimp Tool P/N
				Shell	Contact	
27CP-SP-2.5C2V-CR1	2.5C-2V	5.90	19.3	Au	Au	CR-H-1163
27CP-SP-2.5C2W-CR1	2.5C-2W	6.25	23.5	Au	Au	CR-H-1105
27CP-SP-3C2V-CR1	3C-2V	7.00	23.5	Au	Au	CR-H-1102
27CP-SP-3C2W-CR1	3C-2W	7.60	23.5	Au	Au	CR-H-1103



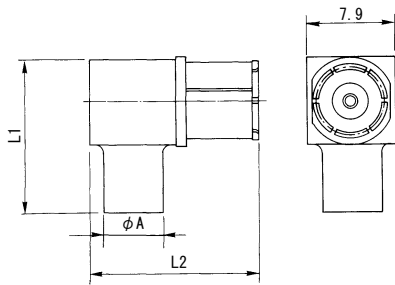
P/N	Applicable Cable	Finish		Hand Crimp Tool P/N
		Shell	Contact	
27CP-SP-2.5C2V-CR1-2	2.5C-2V	Au	Au	CR-H-1163



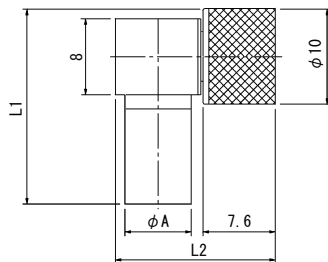
P/N	Applicable Cable	Finish		Hand Crimp Tool P/N
		Shell	Contact	
27CP-SP-2.5C2W-CR1-2	2.5C-2W	Au	Au	CR-H-1105

Unit : mm

Right Angle Plug

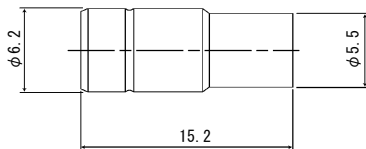


P/N	Applicable Cable	φ A	L1	L2	Finish		Hand Crimp Tool P/N
					Shell	Contact	
27CP-LP-1.5	1.5C-2V	5.5	14.40	15.5	Ni	Au	CR-H-1100
27CP-LP-1.5W	1.5C-2W	5.5	14.35	15.5	Ni	Au	CR-H-1100
	1.5C-2WX						
27CP-LP-2.5W	2.5C-2W	6.0	14.35	15.5	Ni	Au	CR-H-15285
27CP-LP-2.5	2.5C-2V	5.5	14.40	15.5	Ni	Au	CR-H-1100



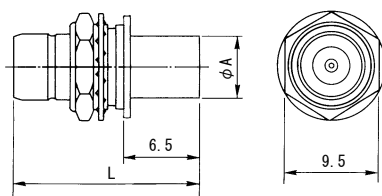
P/N	Applicable Cable	φ A	L1	L2	Finish		Hand Crimp Tool P/N
					Shell	Contact	
27CP-LP-3C2V-CR1	3C-2V	7.0	20.5	16.9	Ni	Au	CR-H-1102 CR-H-16776
27CP-LPS-1.5W-D	1.5C-2W	5.5	16.4	16.0	Ni	Au	CR-H-1100

Jack



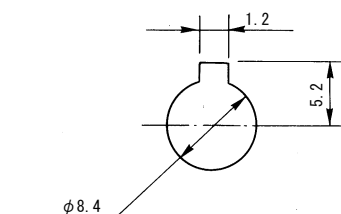
P/N	Applicable Cable	Finish		Hand Crimp Tool P/N
		Shell	Contact	
27CP-J-1.5	1.5C-2V	Ni	Au	CR-H-1100
27CP-J-2.5	2.5C-2V	Ni	Au	CR-H-1100

Bulkhead Jack



P/N	Applicable Cable	φ A	L	Finish		Hand Crimp Tool P/N
				Shell	Contact	
27CP-BJ-1.5	1.5C-2V	5.5	17.10	Ni	Au	CR-H-1100
27CP-BJ-1.5W	1.5C-2W	5.5	17.07	Ni	Au	CR-H-1100
27CP-BJ-2.5	2.5C-2V	5.5	17.10	Ni	Au	CR-H-1100
27CP-BJ-2.5W	2.5C-2W	6.0	17.00	Ni	Au	CR-H-15285

Mounting Hole

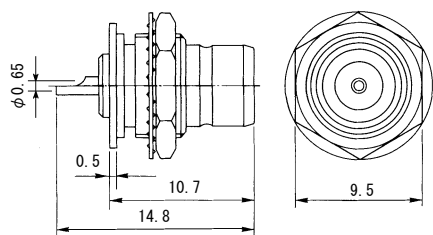


Panel Thickness: 2.4 Max.

27CP Series

Unit : mm

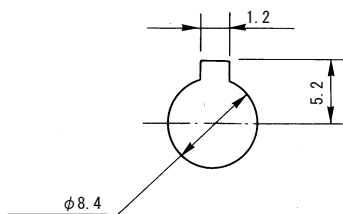
■ Bulkhead Receptacle



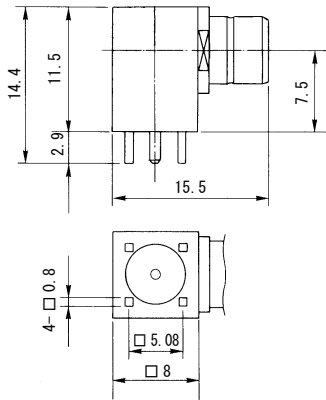
P/N	Finish	
	Shell	Contact
27CP-BR	Ni	Au

Max.Panel Thickness:2.4

Mounting Hole

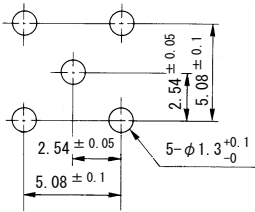


Right Angle Receptacle

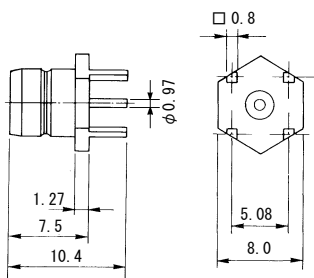


P/N	Finish	
	Shell	Contact
27CP-LR-PC	Ni	Au

PCB Mounting Dimensions



Receptacle



P/N	Finish	
	Shell	Contact
27CP-R-PC	Ni	Au

PCB Mounting Dimensions

