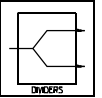


# PDNL-80-500

# 0° POWER DIVIDERS / COMBINERS

20 to 1000 MHz / 8-Way / Medium Power / Uniform Phase & Ampli. Bal. / In-Line Package / N-Type



## PRINCIPAL SPECIFICATIONS

Model Number	Frequency Range, MHz	Freq. Perform., MHz	Isolation, dB		Insertion Loss, dB		Phase Balance		Amplitude Bal., dB		VSWR		Input Power* Max.
			Min.	Typ.	Max.	Typ.	Max.	Typ.	Max.	Typ.	In	Out	
PDNL-80-500	20 - 1000	20 - 1000	20	25	2.5	2.0	8°	4°	0.6	0.3	1.5:1	1.3:1	10 W

\*CW input power when used as divider with 1.2:1 VSWR<sub>out</sub>

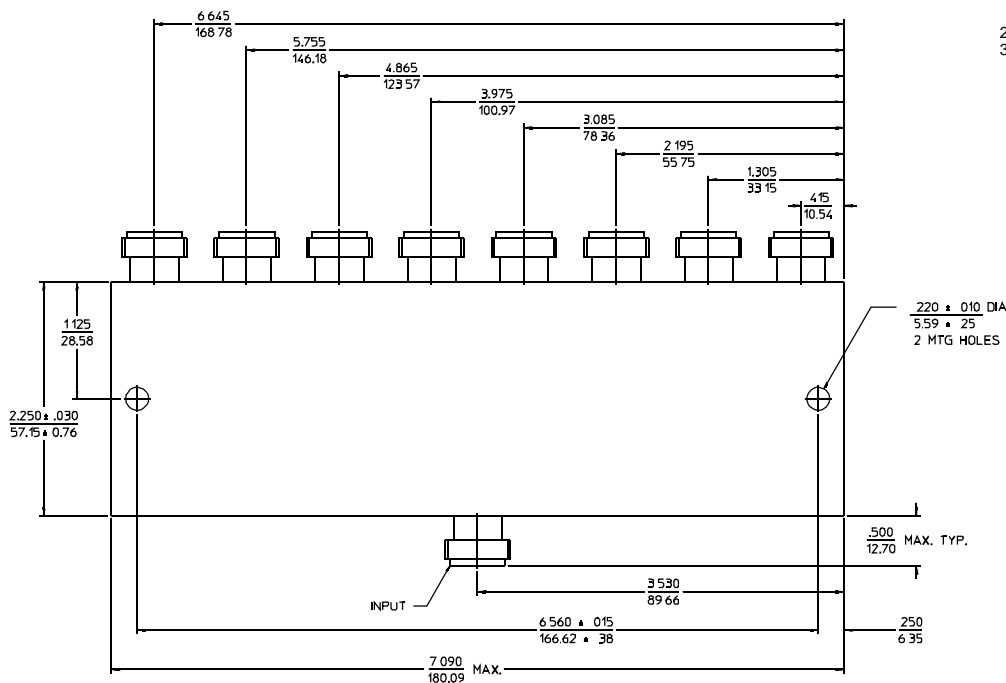
### General Notes:

1. The PDNL-80-500 8-way In-Line Power Divider/Combiner covers 20 to 1000 MHz using a lumped element design for high performance in a convenient package.

### GENERAL SPECIFICATIONS

Coupling: - 9 dB nom.  
 Impedance: 50 Ω nom.  
 Internal Load Dissipation: 250 mW max.  
 Weight, nominal: 16.0 oz. (454 g)  
 Operating Temperature: - 55° to +85°C

### Package Outline



### NOTES:

1. Tolerance on 3 place decimals ±.020(.51) except as noted.
2. Dimensions in inches over millimeters.
3. Metric Equivalents are to nearest 0.01 mm.

22Feb96