

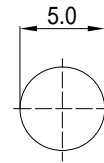
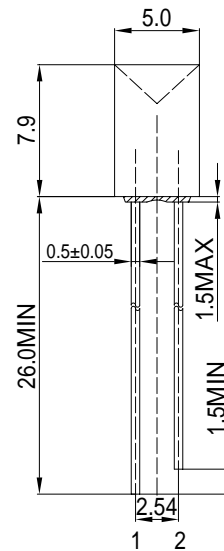
### Features

High Luminous LEDs  
 5mm Concave Standard Directivity  
 Superior Weather-resistance  
 UV Resistant Epoxy  
 Water Clear Type

### Applications

Electronic Signs And Signals  
 Small Area Illuminations  
 Back Lighting  
 Other Lighting

### Outline Dimension



1. Anode  
 2. Cathode  
 Unit:mm  
 Tolerance:±0.30mm

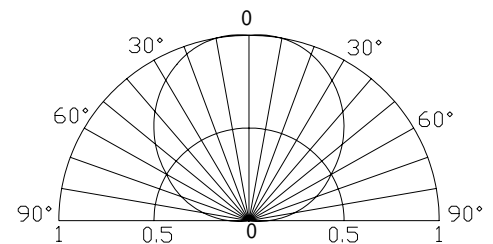
### Absolute Maximum Rating

(Ta=25 °C)

| Item                       | Symbol    | Value      | Unit |
|----------------------------|-----------|------------|------|
| DC Forward Current         | $I_F$     | 30         | mA   |
| Pulse Forward Current*     | $I_{FP}$  | 100        | mA   |
| Reverse Voltage            | $V_R$     | 5          | V    |
| Power Dissipation          | $P_D$     | 72         | mW   |
| Operating Temperature      | $T_{opr}$ | -30 ~ +85  |      |
| Storage Temperature        | $T_{stg}$ | -40 ~ +100 |      |
| Lead Soldering Temperature | $T_{sol}$ | 260 /5sec  | -    |

\*Pulse width Max.10ms Duty ratio max 1/10

### Directivity



### Electrical -Optical Characteristics

(Ta=25 °C)

| Item                | Symbol          | Condition  | Min. | Typ. | Max. | Unit    |
|---------------------|-----------------|------------|------|------|------|---------|
| DC Forward Voltage  | $V_F$           | $I_F=20mA$ | 1.8  | 2.1  | 2.4  | V       |
| DC Reverse Current  | $I_R$           | $V_R=5V$   | -    | -    | 10   | $\mu A$ |
| Domi. Wavelength*   | $\lambda_D$     | $I_F=20mA$ | 620  | 625  | 630  | nm      |
| Luminous Intensity* | $I_v$           | $I_F=20mA$ | -    | 100  | -    | mcd     |
| 50% Power Angle     | $2\theta_{1/2}$ | $I_F=20mA$ | -    | 120  | -    | deg     |

\*1 Tolerance of dominant wavelength is  $\pm 1nm$

\*2 Tolerance of luminous intensity is  $\pm 15\%$