

**Features**

- Uses wiring-easy terminal block.
- The super high  $\mu$  core allows high attenuation.
- Bleed resistor for electric shock protection.

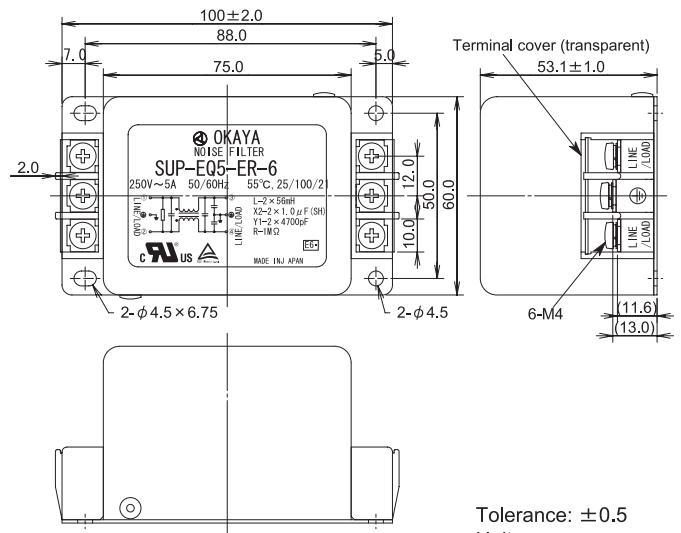
**Applications**

- Information processing devices, Office appliances, Various control systems and etc.



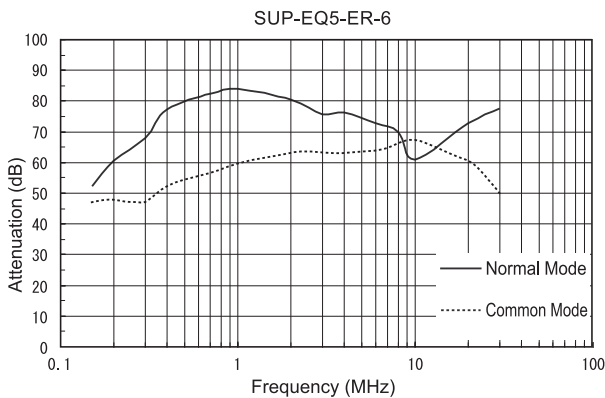
Safety Agency : Standard		File No.
UL	: UL-1283	E78644
C-UL	: C22.2, NO.8-M1986	E78644
TÜV	: EN133200	R2-50006839

*Dimensions (5~30A)*

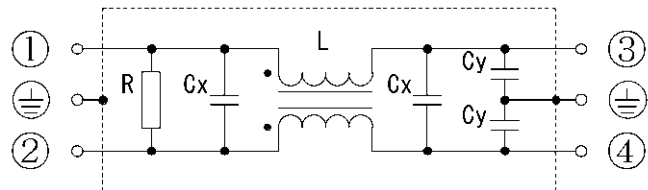


Tolerance:  $\pm 0.5$   
Unit: mm

*Static characteristics*



*Circuit (5~30A)*



**Electrical Specifications**

Rated Voltage **250VAC**

Safety Agency	Model Number	Rated Current (A)	Test Voltage	Insulation Resistance	Leakage Current (max)	Voltage Drop (max)	Temperature Rise (max)	Operating Temperature (°C)	Insertion losses	
									Normal Mode (MHz)	Common Mode (MHz)
 	SUP-EQ5-ER-6	5	Line to Ground 2500Vrms 50/60Hz 60sec	Line to Ground 100M $\Omega$ min (at 500V <sub>DC</sub> )	1mA (at 250Vrms 60Hz)	1.0Vrms	45K	-25 ~ +55	0.15 ~ 30	0.15 ~ 20
	SUP-EQ10-ER-6	10							0.15 ~ 30	0.15 ~ 20
	SUP-EQ15-ER-6	15							0.2 ~ 30	0.6 ~ 20
	SUP-EQ20-ER-6	20							0.4 ~ 30	1.0 ~ 30
	SUP-EQ30-ER-6	30							0.4 ~ 30	3.0 ~ 30

Guaranteed attenuation is more than 30dB in normal mode and more than 35dB in common mode.