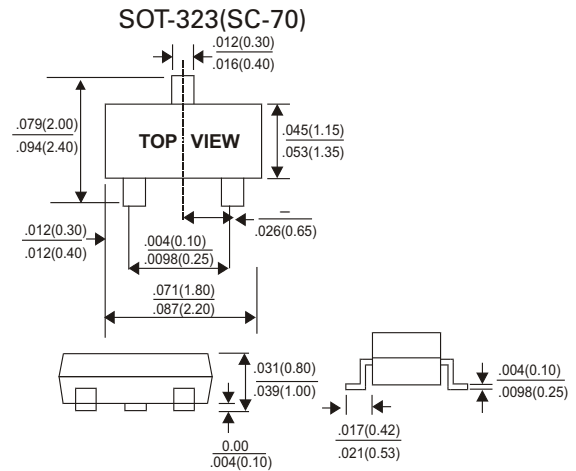
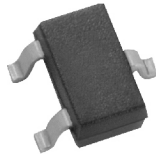


PSD715F/PSD717F/PSD706

SURFACE MOUNT SCHOTTKY BARRIER DIODES

SMALL SIGNAL SCHOTTKY DIODES 30m AMPERES 40~45 VOLTS



FEATURES

- Extremely Fast Switching Speed
- Low Forward Voltage
- Very Small Conduction Losses
- Schottky Barrier Diodes Encapsulated in a SOT-323 Package

DESCRIPTION

These schottky barrier diodes are designed for high speed Switching applications circuit protection, and voltage clamping, Extremely low forward voltage reduces conduction loss, Miniature surface mount package is excellent for hand held and Portable applications where space is limited

MAXIMUM RATING (T_A=25°C unless otherwise noted)

CHARACTERISTICS	SYMBOL	PSD715F	PSD717F	PSD706F	UNITS
Reverse Voltage	V _R	40		45	Volts
Average Rectified Forward Current	I _{F(AV)}	30			mA
Peak Surge Forward Current ⁽¹⁾	I _{FSM}	200			mA
Operating Junction Temperature Range	T _J	-55 to +125			°C
Storage Temperature Range	T _{stg}	-55 to +125			°C

ELECTRICAL CHARACTERISTICS (T_A=25°C unless otherwise noted)

CHARACTERISTICS	SYMBOL	Min	Typ	Max	UNITS
Reverse Breakdown Voltage (I _R = 10 μA)	V _{(BR)R}	40	30	-	Volts
PSD715F/ PSD717F		45			
Forward Voltage I _F = 1.0mA	V _F	-	-	0.37	Volts
Total Capacitance (V _R = 1.0V, f = 1.0MHz)	C _T	-	2.0	-	pF
Reverse Leakage V _R = 10V	I _R	-	-	1.0	μA dc

NOTE :
1. 60Hz for 1 ~

Device Marking

Item	Equivalent Circuit diagram
PSD715F	
PSD717F	
PSD706F	

PSD715F/PSD717F/PSD706F

SURFACE MOUNT SCHOTTKY BARRIER DIODES

Electrical characteristic curves(Ta=25 °C)

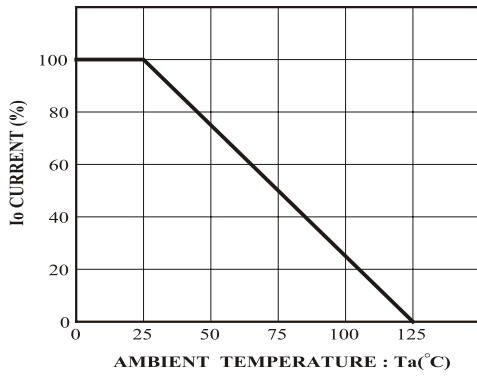


FIG1. Derating curve
(mounting on glass epoxy PCBs)

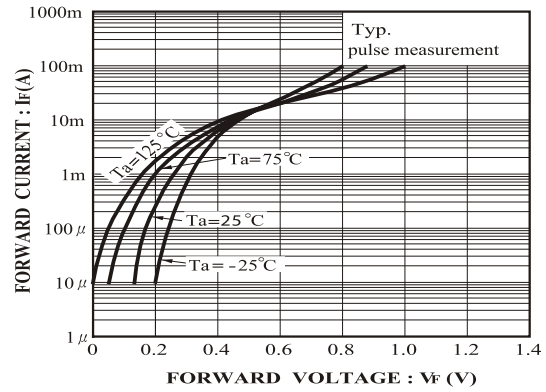


FIG2. Forward characteristics

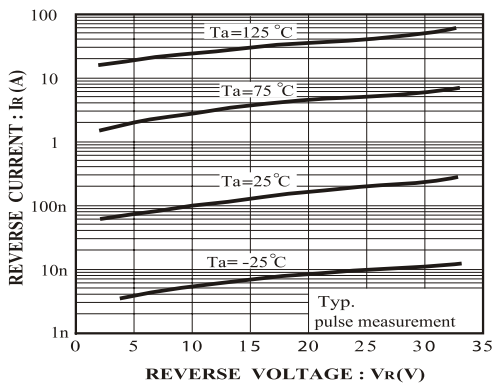


FIG3. Reverse characteristics

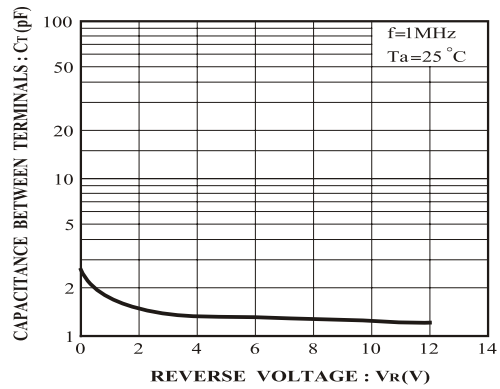


FIG4. Capacitance between terminals characteristics