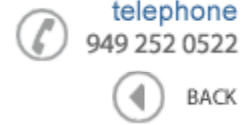




Data Sheet



Product Category: RF SAW Filter

Part Number	Package	Application	Last Modified
803-RF465.0M-C	3.8 x 3.8 SMD	CDMA450 Rx	Jan. 01, 2007

TYPE :

CDMA450, RF SAW Filter, Rx



PART NUMBER :

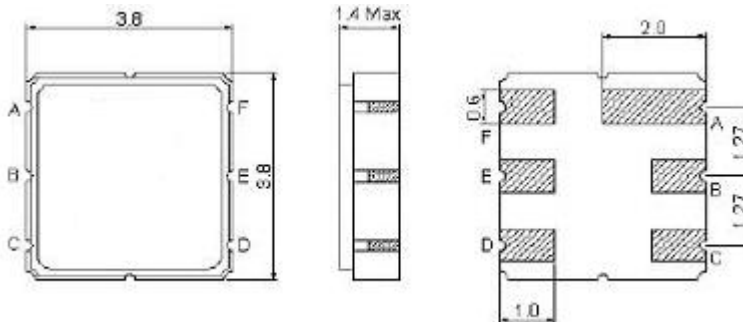
803-RF465.0M-C

OPERATING CONDITIONS / ELECTRICAL CHARACTERISTICS

PARAMETERS	Condition	Minimum	Typical	Maximum	Units
Center Frequency (Fo)	-	-	465.0	-	MHz
Maximum Insertion Loss	462.5 ~ 467.5 MHz	-	2.4	4.8	dB
Stop Band Attenuation:	0.3 ~ 452.5 MHz	25	28	-	dB
	452.5 ~ 457.5 MHz	35	45	-	
	485.0 ~ 507.5 MHz	30	33	-	
	507.5 ~ 1200.0 MHz	20	28	-	
	1200.0 ~ 1700.0 MHz	30	37	-	
1700.0 ~ 2000.0 MHz	20	30	-	-	
Source Impedance (single ended)*	-	-	50	-	ohm
Load Impedance (single ended)*	-	-	50	-	ohm
VSWR	462.5 ~ 467.5 MHz	-	1.9	2.4	-
Maximum Input Power	-	-	-	27	dBm
Operating Temperature	-	-30	-	+80	°C

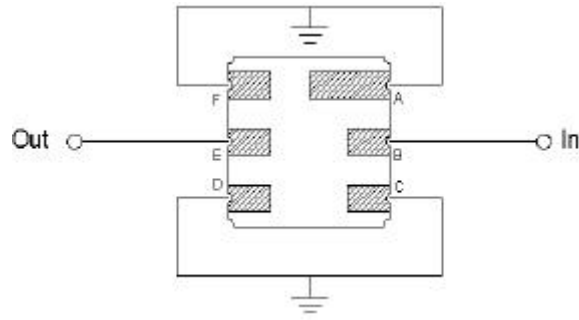
* No Matching Network

PACKAGE OUTLINE (mm)



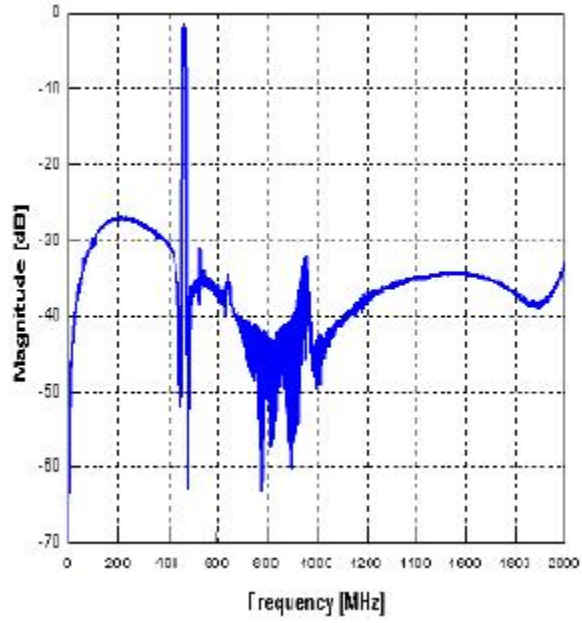
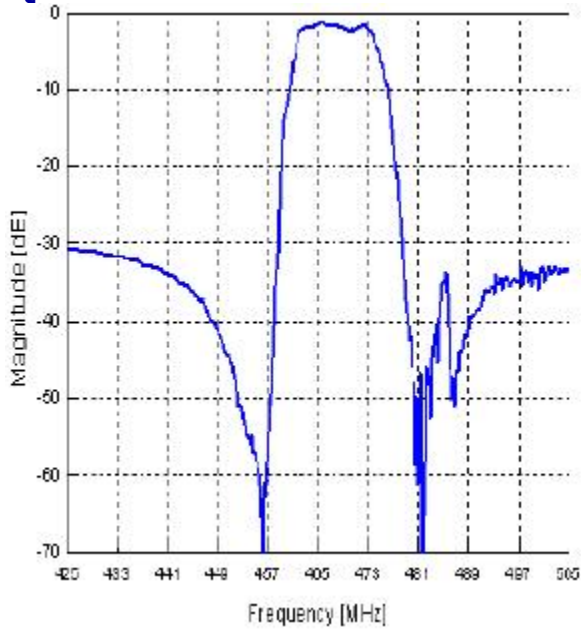
PIN LAYOUT	
A	Ground
B	In
C	Ground
D	Ground
E	Out
F	Ground

TEST FIXTURE

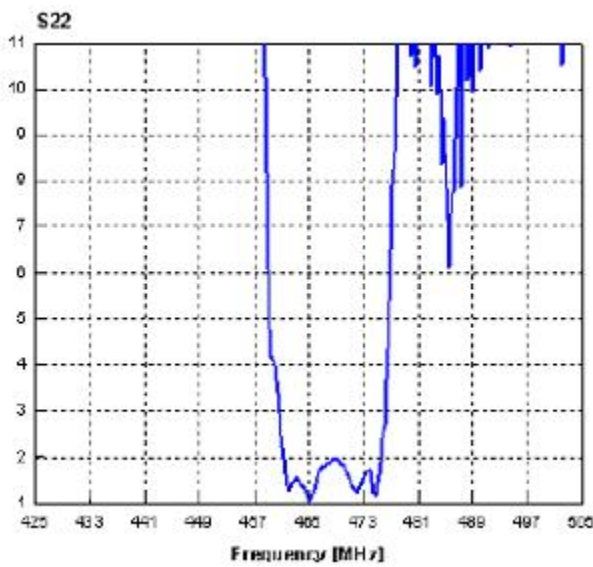
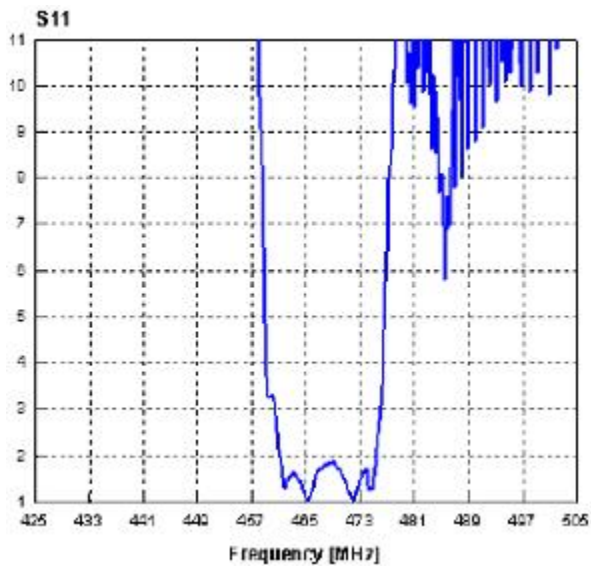


Load Impedance = 100 ohms
 Source Impedance = 50 ohms

FREQUENCY RESPONSE



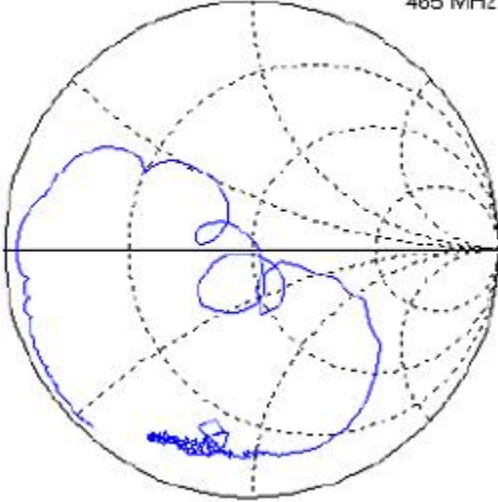
VSWR



SMITH CHART

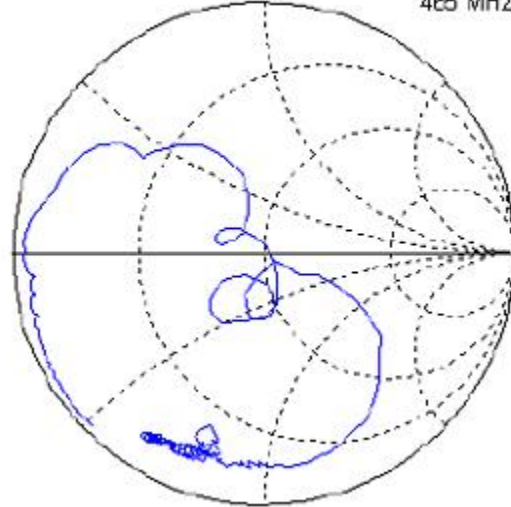
S11

$48.2571+j5.0536$
465 MHz



S22

$49.9194+j3.1194$
465 MHz



Oscilent Corporation - CALL **949.252.0522**

18195 East McDermott Street , Building D , Irvine , CA 92614 , USA
Fax: 949.252.0599 , E-Mail: Sales@Oscilent.com

Part No.: 803-RF465.0M-C