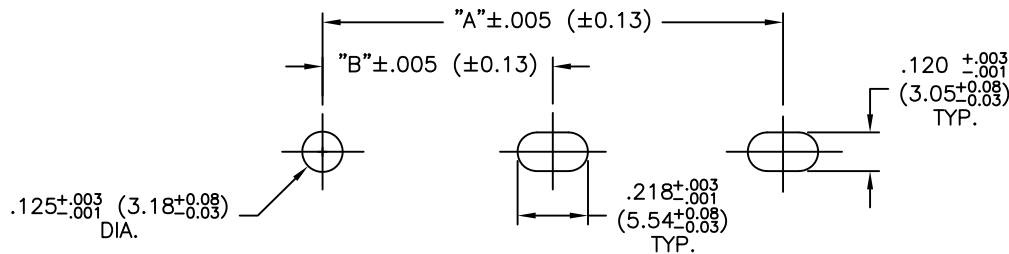


PART NO.	"L"	"A"	"B"
	±.030 (±0.8)	±.024 (±0.6)	±.016 (±0.4)
RN-250-2	2.5 (63.5)	2.0 (50.8)	-
RN-300-2	3.0 (76.2)	2.5 (63.5)	-
RN-350-2	3.5 (88.9)	3.0 (76.2)	-
RN-400-2	4.0 (101.6)	3.5 (88.9)	-
RN-450-2	4.5 (114.3)	4.0 (101.6)	-
RN-500-2	5.0 (127.0)	4.5 (114.3)	-
RN-550-2	5.5 (139.7)	5.0 (127.0)	-
RN-600-2	6.0 (152.4)	5.5 (139.7)	-
RN-650-2	6.5 (164.1)	6.0 (152.4)	-
RN-700-3	7.0 (177.8)	6.5 (164.1)	3.25 (82.2)
RN-750-3	7.5 (190.5)	7.0 (177.8)	3.5 (88.5)
RN-800-3	8.0 (203.2)	7.5 (190.5)	3.75 (94.9)
RN-850-3	8.5 (215.9)	8.0 (203.2)	4.0 (101.6)



TYPICAL MOUNTING HOLES
 PANEL THICKNESS: .047-.085 (1.2-2.2)

NOTES:

- MAT'L: NYLON 6/6 UL 94 V-2 (RMS-48).
 FLAME RETARDANT, NYLON 6/6
 UL 94 V-0 (RMS-66),
 AVAILABLE BY SPECIAL ORDER ONLY.
- COLOR: NATURAL.

H	SEE CO 200455 FOR CHANGES	SK 10.21.09
G	SEE CO 200086 FOR CHANGES	SK 12.07.07
F	SEE CO 200041 FOR CHANGES	SK 09.28/07
E	SEE ECN #863 FOR CHANGES	SM 10.04.04
D	SEE ECN #831 FOR CHANGES	SM 08.09.04
C	SEE ECN #547 FOR CHANGES	SM 12.20.02
B	SEE ECN #526 FOR CHANGES	SM 11.21.02
A	ADDED FLAME RET. TO NOTES; CHANGED FILE NO.	SM 02.21.02
REV	DESCRIPTION	ENGR DATE

TITLE: NARROW CARD GUIDE (RN)		DWG IN IN(mm)		FINAL	
TOLERANCES UNLESS NOTED .XX=±.010 .XXX=±.005 FRAC=±1/64 ANG=±1'	FILE # RN MAT'L: SEE NOTES RE: RICHCO, INC.	DWN: J.B. DT: 04-08-97	APP: DT:	PART # SEE CHART	PRINT TYPE CA
		RICHCO INC. PO BOX 804238, CHICAGO, 60680 (773) 539-4060			