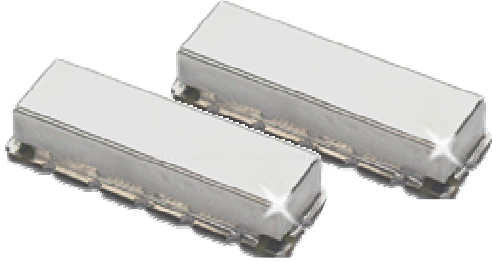


KR 2433-400 400 MHz Lowpass Filter

General Description

KR 2433-400 is a 400 MHz surface mount lowpass filter. Other passband frequencies are available. Please consult the factory.



Features

- Surface Mount Package
- Sharp Transition to Stopband
- 60 dB Stopband
- 50 Ω Source and Load

Typical Performance

Passband Amplitude & Group Delay
(1 dB/div and 2 nsec/div)

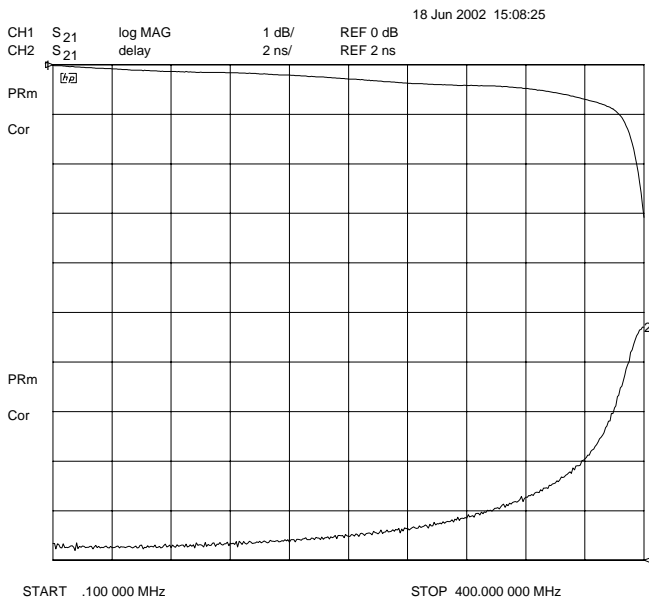


Figure 1

Overall Response
(10 dB/div)

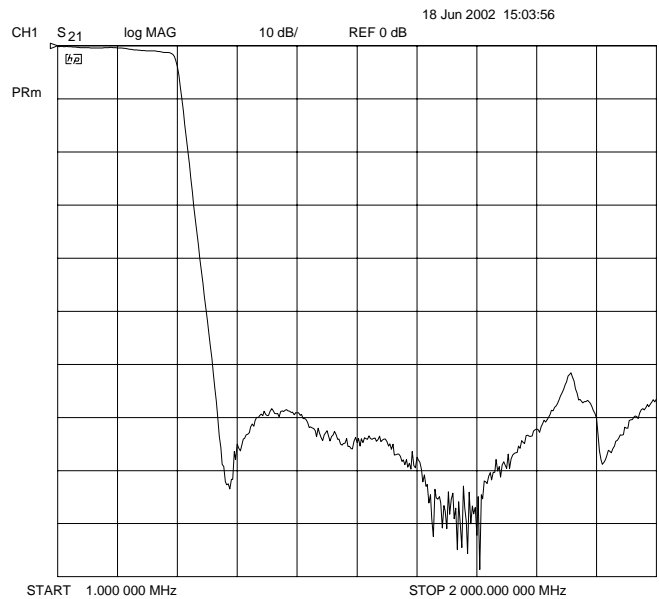


Figure 2

KR Electronics, Inc.
91 Avenel Street
Avenel, NJ 07001

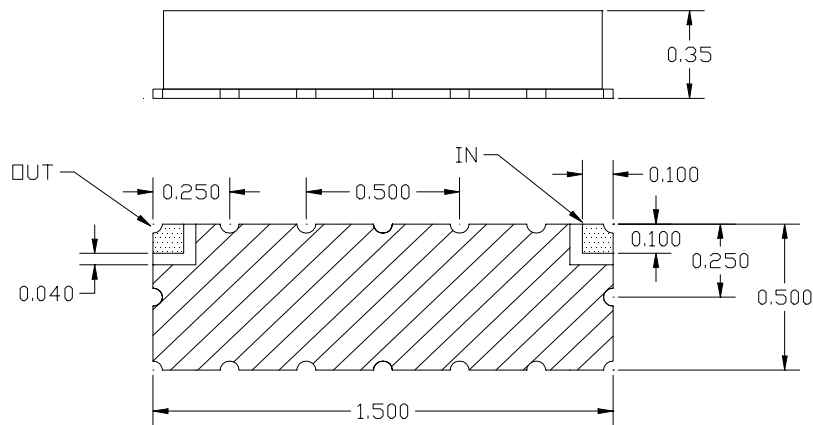
Web www.krfilters.com
Email sales@krfilters.com
Phone (732) 636-1900
Fax (732) 636-1982

KR 2433-400 Lowpass

Specifications

Parameter	Specification
Filter type	Lowpass
End of Passband (3 dB)	400 MHz
Attenuation at 422 MHz	12 dB \pm 2 dB
Attenuation at 522 MHz	> 54 dB
Attenuation at 734 MHz	> 60 dB
Source and Load	50 Ω

Physical Dimensions



Notes:

1. Surface mount package — Metal cover, open frame
2. Dimensions in inches
3. Use SN60 or SN63 solder during installation
4. If boards are cleaned after installation, units must be completely dried to remove any entrapped moisture that will effect electrical