

PLEASE CHECK WWW.MOLEX.COM FOR LATEST PART INFORMATION

Part Number: [0050361666](#)
Status: **Active**
Overview: [minifit_jr](#)
Description: 4.20mm (.165") Pitch Mini-Fit Jr.™ Receptacle Housing, Single Row, PA Polyamide Nylon 6/6, UL 94V-0, 5 Circuits, Passive Latch, Glow Wire Compatible

Documents:

[3D Model](#) [Product Specification PS-5556-001 \(PDF\)](#)
[Drawing \(PDF\)](#) [RoHS Certificate of Compliance \(PDF\)](#)

Agency Certification

CSA LR19980
TUV R72081037
UL E29179

General

Product Family Crimp Housings
Series [5557](#)
Comments Current = 13A max. per circuit when header is mated to a receptacle loaded with [45750](#) series terminals crimped to 16 AWG wire. . See Molex product specification PS-45750-001 for additional current de-rating information.. See Molex product specification PS-5556-001 for additional current de-rating information.
Overview [minifit_jr](#)
Product Name Mini-Fit Jr.™

Physical

Breakaway No
Circuits (maximum) 5
Color - Resin Black
Flammability 94V-0
Gender Receptacle
Glow-Wire Compliant Yes
Keying to Mating Part None
Lock to Mating Part Yes
Material - Resin Nylon
Number of Rows 1
Packaging Type Bag
Panel Mount No
Pitch - Mating Interface (in) 0.165 In
Pitch - Mating Interface (mm) 4.20 mm
Pitch - Term. Interface (in) 0.165 In
Pitch - Term. Interface (mm) 4.20 mm
Polarized to Mating Part Yes
Ports 1
Stackable No
Temperature Range - Operating -40°C to +105°C

Electrical

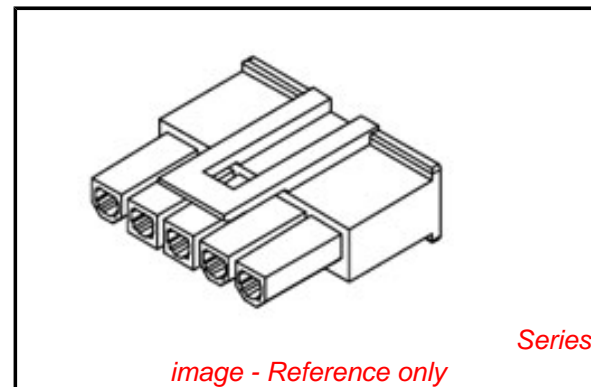
Current - Maximum per Contact 13A

Material Info

Old Part Number 5557-05R4-225

Reference - Drawing Numbers

Packaging Specification PK-5557-002, PK-5557-003



EU RoHS

ELV and RoHS Compliant
REACH SVHC Contains SVHC: No
Halogen-Free Status

China RoHS



Need more information on product environmental compliance?

Email productcompliance@molex.com
For a multiple part number RoHS Certificate of Compliance, [click here](#)

Please visit the [Contact Us](#) section for any non-product compliance questions.

Search Parts in this Series

[5557Series](#)

Mates With

[5559](#) Crimp Housings Plug,

Use With

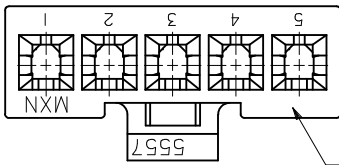
[5556](#) Female Terminal

Product Specification
Sales Drawing
Test Summary

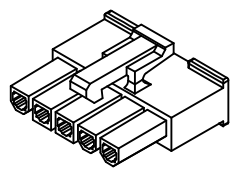
PS-5556-001
SD-5557-525
TS-5556-002

This document was generated on 05/19/2010

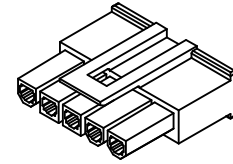
PLEASE CHECK WWW.MOLEX.COM FOR LATEST PART INFORMATION



OPTIONAL ENGINEERING NUMBER LOCATION

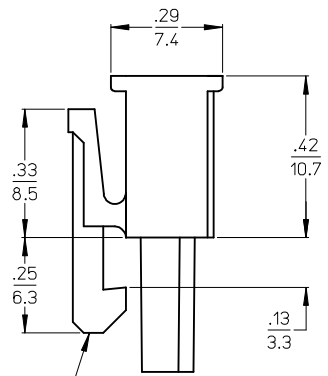
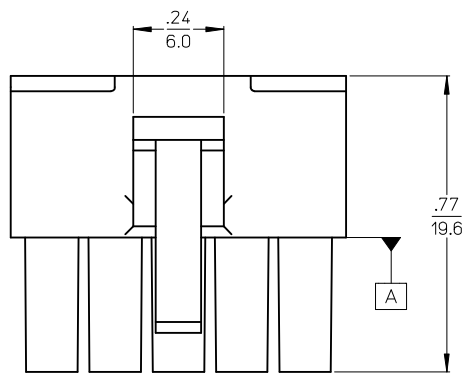


POSITIVE LATCH SCALE 2:1



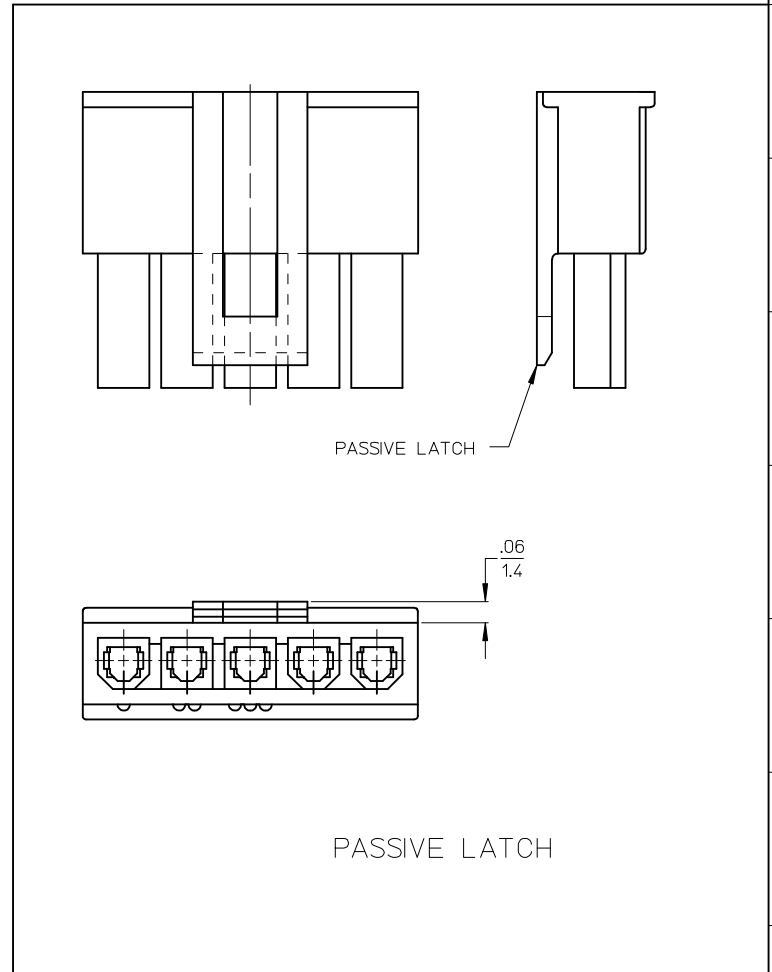
PASSIVE LATCH SCALE 2:1

MATERIAL NUMBER	ENGINEERING NUMBER	TOOL STATUS	CKT SIZE	LATCH STYLE	DIM A
50-36-1746	5557-04R2-225	TOOLED	4	POSITIVE	.709/(18.00)
50-36-1682	5557-05R2-225	TOOLED	5	POSITIVE	.874/(22.20)
50-36-1666	5557-05R4-225	TOOLED	5	PASSIVE	.874/(22.20)
50-36-2491	5557-06R2-225	NOT TOOLED	6	POSITIVE	1.039/(26.40)
50-36-2324	5557-07R2-225	NOT TOOLED	7	POSITIVE	1.205/(30.60)
50-36-2288	5557-10R2-225	TOOLED	10	POSITIVE	1.701/(43.20)

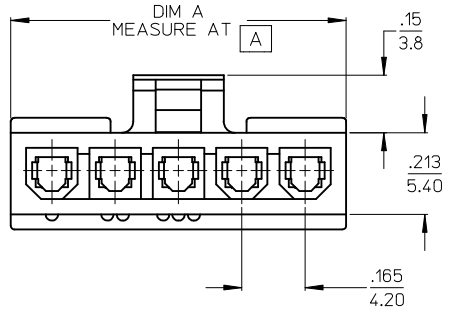


POSITIVE LATCH

PASSIVE LATCH



PASSIVE LATCH



LEGEND:
 5557-**R*-225
 CIRCUIT SIZE
 RECEPTACLE
 R2= SINGLE ROW, POSITIVE LATCH
 R4= SINGLE ROW, PASSIVE LATCH
 MATERIAL
 SEE NOTE 1

- NOTES:
 1) MATERIAL:
 225 = NYLON (PA6), UL94V-0, COLOR: BLACK; IEC 60335-1, 4th EDITION GLOW WIRE CAPABLE.
 2) FINISH: NOT APPLICABLE
 3) PRODUCT SPECIFICATION: PS-5556-001
 4) PACKAGING: BULK
 5) PART MATES WITH MOLEX PLUG #5559 AND HEADERS #5566 AND #5569.
 6) PART TO BE USED WITH MOLEX FEMALE TERMINAL #5556.
 7) PART IS NOT DESIGNED FOR CURRENT SHARING.
 8) CONNECTORS ARE NOT TO BE MATED OR UNMATED WHILE CIRCUITS ARE LIVE.
 9) WIRES ARE TO BE DRESSED IN SUCH A MANNER TO ALLOW THE TERMINALS TO FLOAT FREELY IN THE POCKET.
 10) PART CONFORMS TO CLASS "B" REQUIREMENTS OF COSMETIC SPECIFICATION PS-45499-002 WITH THE EXCEPTION OF DISCOLORATION, FLASH AND SINK MEET CLASS "C" REQUIREMENTS.

ADD P/N TO CHART EC NO: UCP2010-0295 DRWN:TBENES 2009/08/03 CHKD:JBELL 2009/08/03 APPR:FSMITH 2009/08/03 REV: A2	QUALITY SYMBOLS ▽=0 ▽=0	GENERAL TOLERANCES (UNLESS SPECIFIED)		DIMENSION STYLE IN/MM		SCALE METRIC	DESIGN UNITS METRIC		THIRD ANGLE PROJECTION	
		4 PLACES ± --- ± --- 3 PLACES ± --- ± .010 2 PLACES ± .25 ± .015 1 PLACE ± .38 ± ---	mm INCH	DRAWN BY LSCHMIDT	DATE 2007/06/28	TITLE MINI-FIT JR. RECEPTACLE SINGLE ROW GLOW WIRE				
		ANGULAR ±1/2°		CHECKED BY ADERR	DATE 2007/07/02	MOLEX INCORPORATED				
DRAFT WHERE APPLICABLE MUST REMAIN WITHIN DIMENSIONS		APPROVED BY FSMI THROEMER 2007/07/06		MATERIAL NO. SEE CHART		DOCUMENT NO. SD-5557-525		SHEET NO. 1 OF 1		
THIS DRAWING CONTAINS INFORMATION THAT IS PROPRIETARY TO MOLEX INCORPORATED AND SHOULD NOT BE USED WITHOUT WRITTEN PERMISSION										