

**PLEASE CHECK WWW.MOLEX.COM FOR LATEST PART INFORMATION**

**Part Number:** [0350289010](#)  
**Status:** **Active**  
**Description:** 1.78mm (.070") Tab Terminal, Female, 18-22 AWG (0.82-0.33mm<sup>2</sup>), Pre-Tin Plated, Reel

**Documents:**

[Drawing \(PDF\)](#) [Product Specification PS-35127-001 \(PDF\)](#)  
[Product Specification PS-35028-001 \(PDF\)](#) [RoHS Certificate of Compliance \(PDF\)](#)

**General**

Product Family	Crimp Terminals
Series	<a href="#">35028</a>
Crimp Quality Equipment	Yes
Product Name	N/A

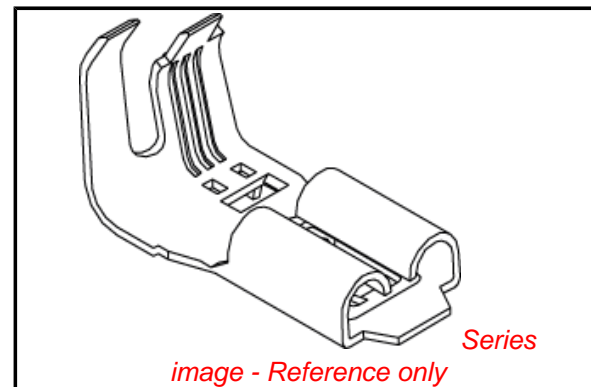
**Physical**

Gender	Female
Material - Metal	Phosphor Bronze
Material - Plating Mating	Tin
Material - Plating Termination	Tin
Packaging Type	Reel
Plating min: Mating (µin)	32.00
Plating min: Mating (µm)	0.800
Plating min: Termination (µin)	32.00
Plating min: Termination (µm)	0.80
Termination Interface: Style	Crimp or Compression
Wire Insulation Diameter	3.60mm (.142") max.
Wire Size AWG	18, 20, 22
Wire Size mm <sup>2</sup>	N/A

**Material Info**

**Reference - Drawing Numbers**

Product Specification	PS-35028-001, PS-35127-001
Sales Drawing	SD-35028-****



**EU RoHS**

**ELV and RoHS Compliant**  
**REACH SVHC Contains SVHC: No**  
**Halogen-Free Status**

**China RoHS**



**Need more information on product environmental compliance?**

Email [productcompliance@molex.com](mailto:productcompliance@molex.com)  
 For a multiple part number RoHS Certificate of Compliance, [click here](#)

Please visit the [Contact Us](#) section for any non-product compliance questions.

**Search Parts in this Series**

[35028Series](#)

**Mates With**

[2.54mm \(.100"\) Male Tab](#)

**Use With**

[35153](#)

**Application Tooling | [FAQ](#)**

*Tooling specifications and manuals are found by selecting the products below. Crimp Height Specifications are then contained in the Application Tooling Specification document.*

**Global**

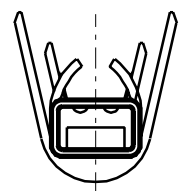
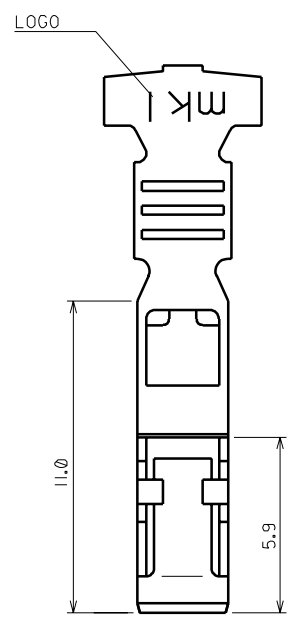
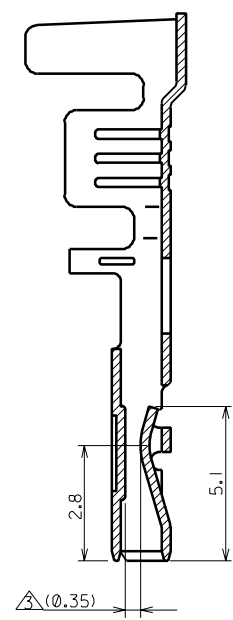
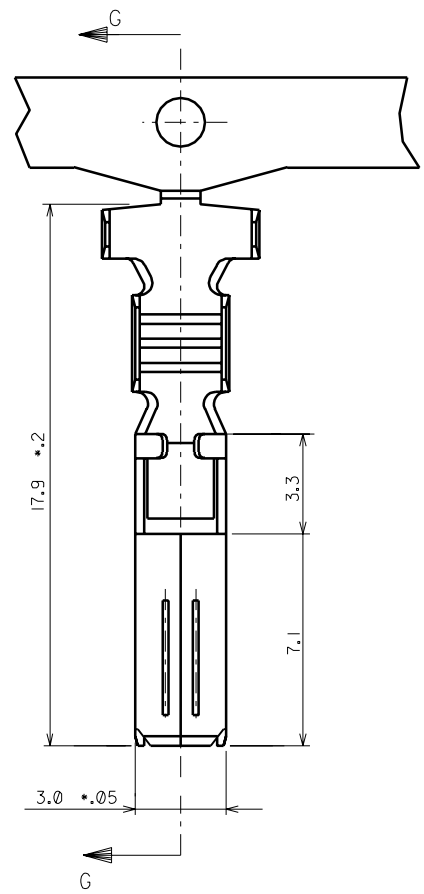
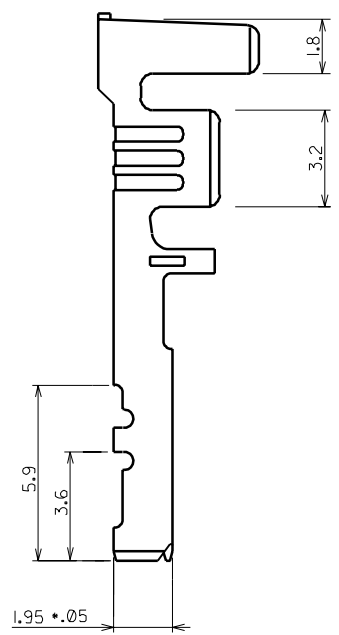
Description	Product #
FineAdjust™ Applicator for 1.78mm (.070") Female Terminal 18-22 AWG	<a href="#">0639002000</a>

This document was generated on 04/15/2010

**PLEASE CHECK [WWW.MOLEX.COM](http://WWW.MOLEX.COM) FOR LATEST PART INFORMATION**

DO NOT SCALE DRAWING  
DIMENSION IN METRIC

PROJECT NO.  
SIMILAR ITEM  
DWG. NO.  
SD-35028-\*\*\*\*\*



NOTES

1. MATERIAL: PHOSPHOR BRONZE  
THICKNESS : 0.30 ± 0.02  
WIDTH : 22.8 ± 0.08
2. PLATING: PREPLATING (REFLOW TREATMENT)
3. MALE TAB (THICK 0.6 ± 0.05) FIT.  
- INSERTION FORCE: 0.8kgf. MAX.  
- RETENTION FORCE: 0.3kgf. MIN.
4. WIRE SIZE : AWG #20 × 2 35028-9502  
AWG #18 ± #22 35028-9010  
AWG #14 ± #20 35028-1111

REVISED EC NO. KOR2002-0074 DRWN: C.B.CHIN 02/02/19 CHK: W.Y.YANG APPR: C.W.LEE	DESCRIPTION MAJOR = 0 CRITICAL C = 0	QUALITY SYMBOLS		GENERAL TOLERANCES: (UNLESS SPECIFIED)	SCALE 6:1	DESIGN UNITS <input checked="" type="checkbox"/> mm <input type="checkbox"/> INCH	THIRD ANGLE PROJECTION	DIMENSIONS: <input type="checkbox"/> mm <input type="checkbox"/> INCH <input checked="" type="checkbox"/> mm ONLY		SHT	REV
		4 PLACES	±0.	±.	DRAWN BY & DATE H.J.KIM 94/06/25	TITLE: .070 FEMALE TERMINAL		MOLEX MOLEX INCORPORATED			
3 PLACES	±0.	±.	CHECKED BY & DATE B.K.CHOI 94/06/25								
2 PLACES	±0.15	±.	APPROVED BY & DATE	CAD FILENAME S35028.DGN	MATERIAL NO. SEE NOTES	DRAWING NO. SD-35028-****	SHEET NO. IOF 1	THIS DRAWING CONTAINS INFORMATION THAT IS PROPRIETARY TO MOLEX INCORPORATED AND SHOULD NOT BE USED WITHOUT WRITTEN PERMISSION.			
1 PLACE	±0.15	±.	ANGULAR: ± 0.5°	SIZE B							
DRAFT WHERE APPLICABLE MUST REMAIN WITHIN DIMENSIONS				THIS DRAWING CONTAINS INFORMATION THAT IS PROPRIETARY TO MOLEX INCORPORATED AND SHOULD NOT BE USED WITHOUT WRITTEN PERMISSION.							