



Solid State Devices, Inc.

14701 Firestone Blvd * La Mirada, Ca 90638
 Phone: (562) 404-4474 * Fax: (562) 404-1773
 ssdi@ssdi-power.com * www.ssdi-power.com

SDA346

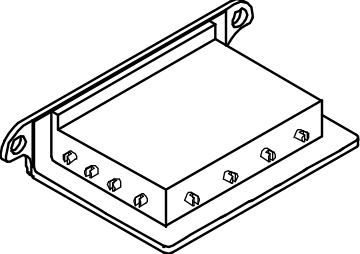
**ULTRA FAST RECOVERY
 HIGH VOLTAGE ASSEMBLY**
Up To 30KV @ 250mA
 125KHz Operating Frequency

Designer's Data Sheet

Part Number/Ordering Information 1/

SDA346 —

L Screening 2/
 — = Not Screened
 TX = TX Level
 TXV = TXV
 S = S Level



- FEATURES:**
- Designed For Use With High Voltage Switching Power Supplies
 - Discretes and Assemblies Screened to TX, TXV, or S Level
 - High Reverse Transient Energy Capabilities
 - Void Free, Hermetically Sealed, Metallurgically Bonded Discretes
 - Single Junction Discretes Provide Superior Thermal Properties Than Designs Using Multi-junction Discretes
 - Isolated Aluminum Heat Sink with Special Epoxy Encapsulation Provides Superior Power Dissipation
 - All Internal Devices are Matched & Selected
 - Unique Construction Techniques Guarantee 100% Corona Free Operation
 - Consult Factory for Higher Voltages and Currents and Alternate Bridge Configurations

MAXIMUM RATINGS PER LEG				ELECTRICAL CHARACTERISTICS PER LEG			
Rating ^{1/}	Symbol	Value	Unit	Characteristic ^{1/}	Symbol	Value	Unit
Peak Repetitive Reverse Voltage and DC Blocking Voltage	VRM(rep) Vr	10,000	Volts	Max. Full Cycle Forward Voltage Drop, Averaged Over Full Cycle ^{6/}	VF (AV)	7.0	Vdc
RMS Reverse Voltage	Vr	7,000	Volts	Max. Instantaneous Forward Voltage Drop ^{7/}	VF	14.5	Vdc
Half Wave Rectified Forward Current Averaged Over Full Cycle ^{2/}	IO	1	Amps	Max. Full Cycle Leakage Current Averaged Over Full Cycle ^{8/}	IR (AV)	100	µAdc
Peak Repetitive Forward Current ^{3/}	IFM(rep)	6	Amps	Max. Reverse Leakage Current ^{9/}	IR	5	µAdc
Peak Surge Current ^{4/}	IFM(surge)	25	Amps	Max. Junction Capacitance ^{10/}	CJ	1.5	pf
Operating & Storage Temperature	TJ, Tstg	-55 to +125	°C				
Reverse Recovery Time ^{5/}	trr	60	ns				

NOTES:

- | | |
|--|--|
| <ol style="list-style-type: none"> 1. Unless Otherwise Specified, All Electrical Characteristics @25°C. 2. Resistive Load, 60Hz, Sine Wave, TC=25°C. 3. TC=55°C, 8.3ms Pulse, Allow Junction to Reach Equilibrium Between Pulses. 4. TC=55°C, 8.3ms Pulse, Superimposed on Rated Current at Rated Voltage. 5. Recovery Conditions: I_F = 0.5 Amp, I_R = 1.0 Amp rec. to .25 Amp, tested on each individual diode before assembly. | <ol style="list-style-type: none"> 6. IO (MAX), 60Hz, Square Wave, TC = 55°C. 7. IF = 1 Adc, TC = 25°C, 300 µs Pulse. 8. Rated VR, 60Hz, Square Wave, TC = 100°C. 9. Rated VR, TC = 25°C. 10. VR = 100V, TC = 25°C. |
|--|--|

NOTE: All specifications are subject to change without notification. SCD's for these devices should be reviewed by SSDI prior to release.	DATA SHEET #: RA0073A	DOC
--	------------------------------	------------

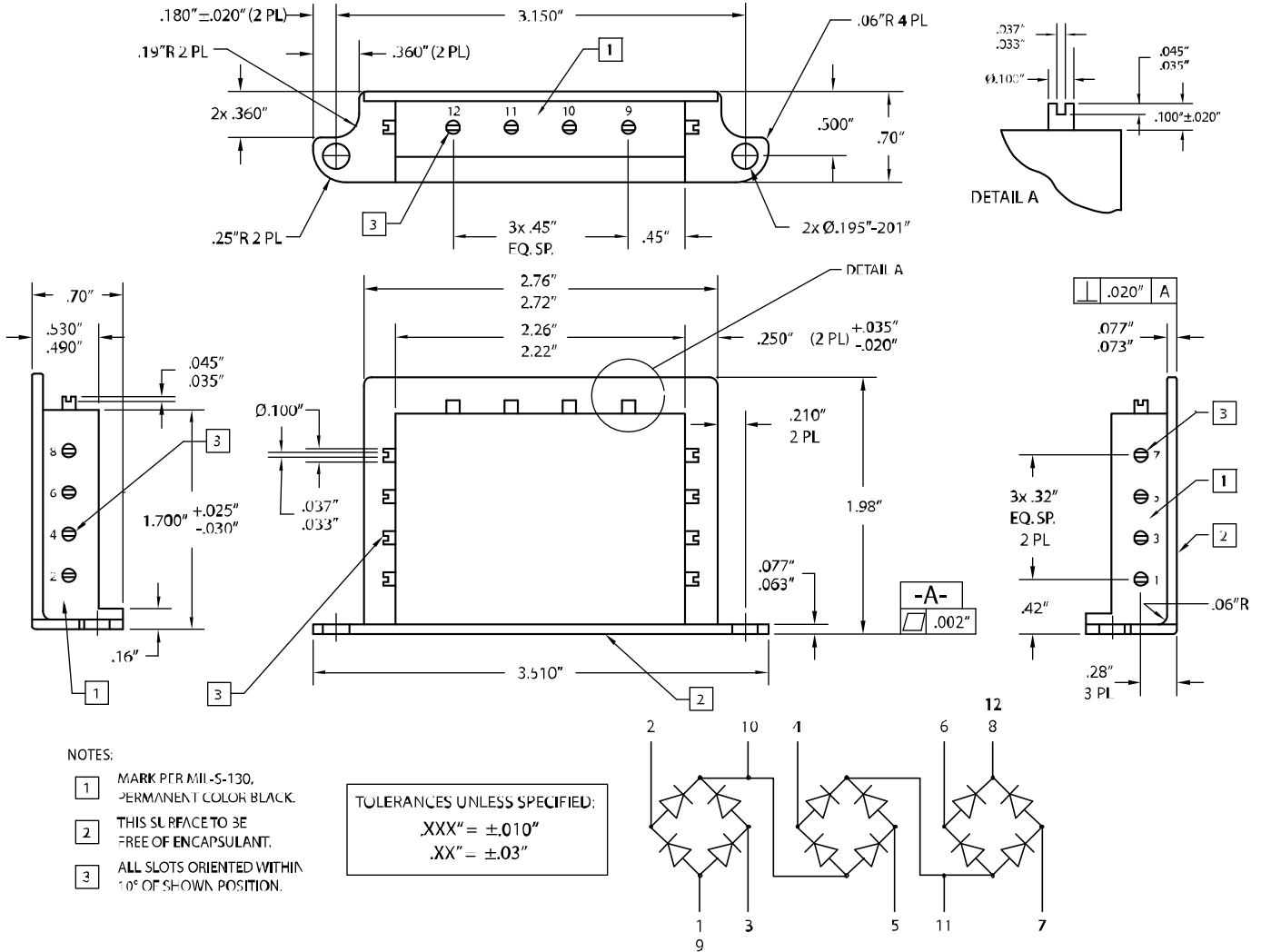


Solid State Devices, Inc.

14701 Firestone Blvd * La Mirada, Ca 90638
Phone: (562) 404-4474 * Fax: (562) 404-1773
ssdi@ssdi-power.com * www.ssdi-power.com

SDA346

SDA346 Outline and Schematic Drawing*:



*For information on curves, contact the Factory Representative for Engineering Assistance.