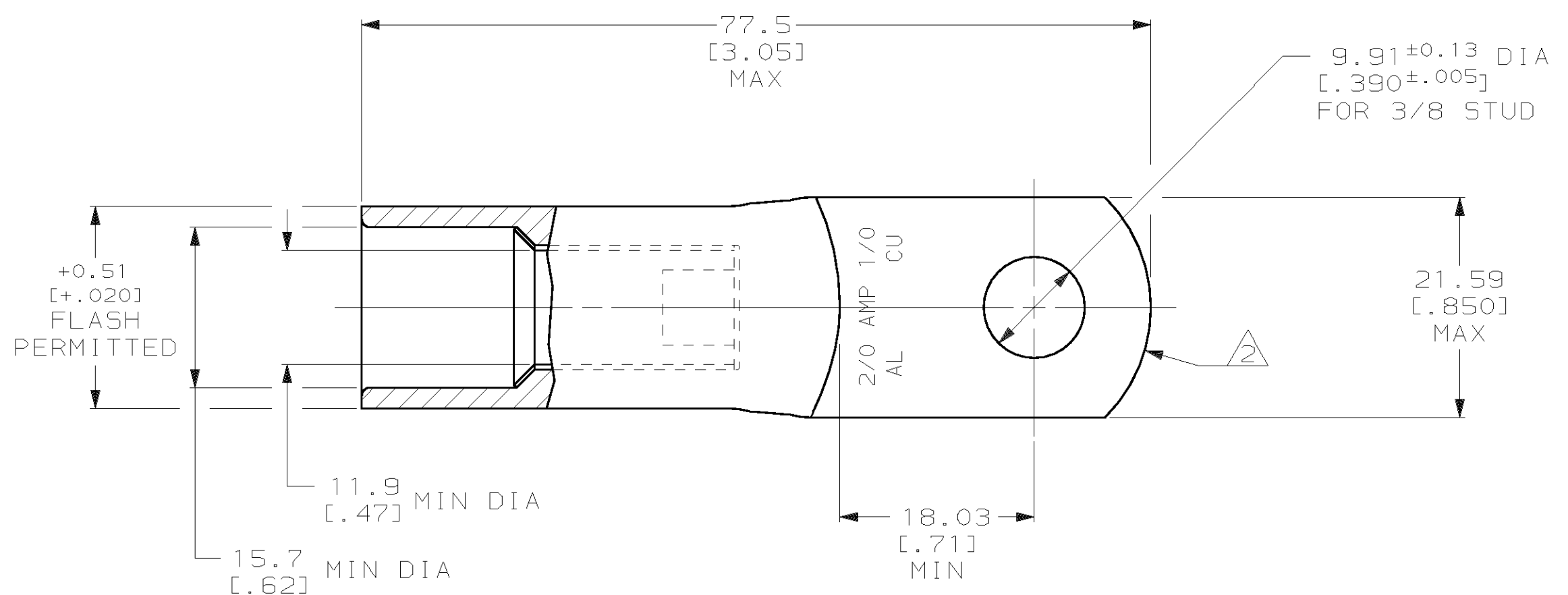
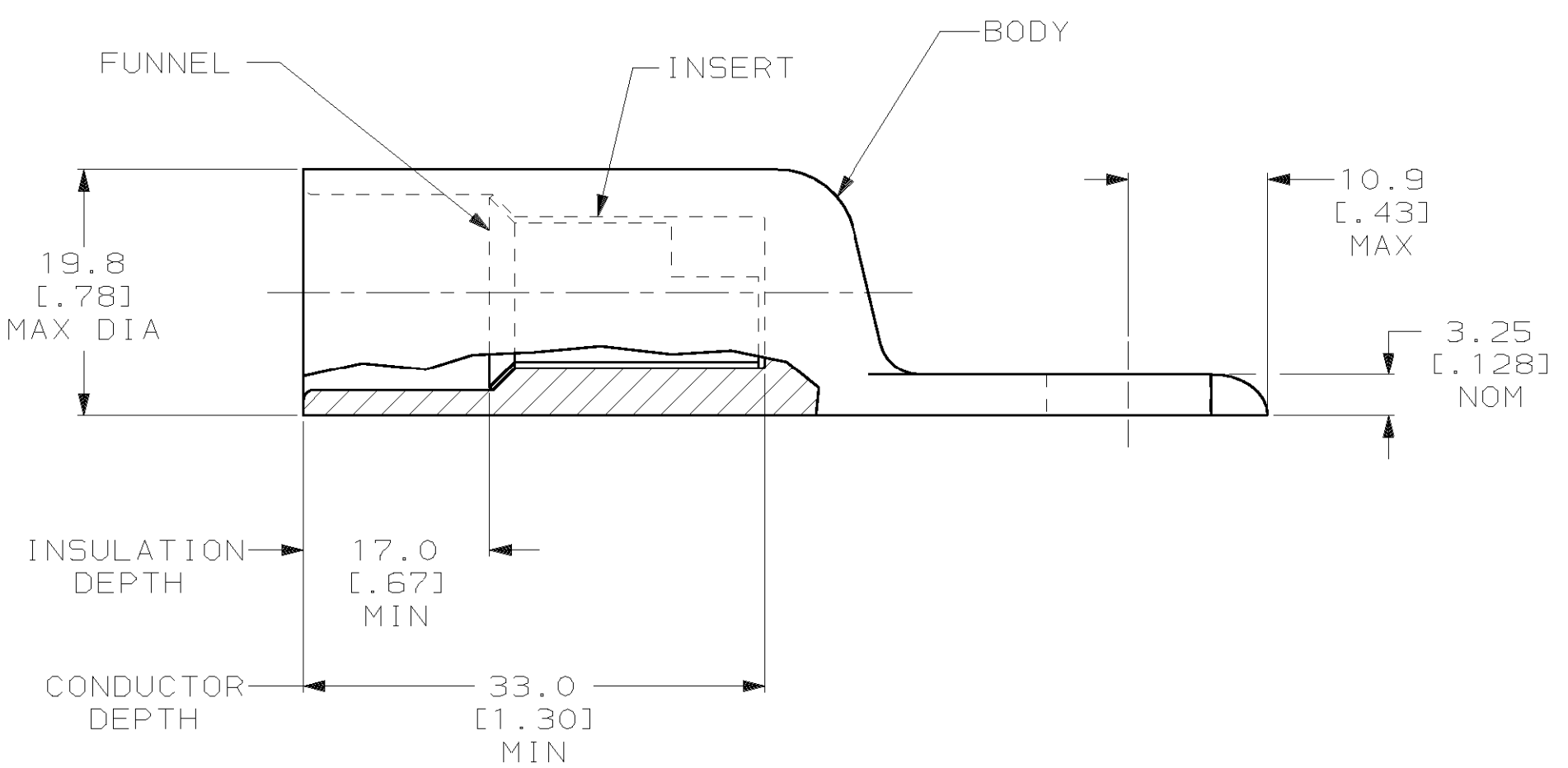


THIS DRAWING IS UNPUBLISHED. RELEASED FOR PUBLICATION
 © COPYRIGHT 19 BY AMP INCORPORATED. ALL INTERNATIONAL RIGHTS RESERVED.

LOC		DIST		P		F		ZONE		LTR		REVISIONS		DATE	APPD
G		86								B		REV PER 0G3A-0828-00	09JAN01	3 rd	MS



- 1 WIRE INSULATION: 12.70 [0.500] - 13.97 [0.550] DIA
- △ THE TONGUE RADIUS FEATURE IS NOT A TOOLING CONTROLLED DIMENSION AND MAY NOT BE A TRUE RADIUS.



INSERT & FUNNEL: BRASS MIL-C-50
 NICKEL PL PER QQ-N-290
 0.00762 [0.000300] AVG THK
 BODY: COPPER ASTM-B187 ANNEALED
 TIN PL PER MIL-T-10727
 0.00381 [0.000150] MIN THK

MATERIAL & FINISH	PART NO
	55944-1

DO NOT SCALE PRINT. UNLESS SPECIFIED DIMENSIONS IN mm [INCHES] TOLERANCES ON:		DR 4/29/93 DK SCHRUM		AMP Incorporated Harrisburg, PA 17105-3608	
2 PLC DEC ± -		CHK 5/5/93 WJ VOCKROTH			
3 PLC DEC ± -		APPD 5/5/93 RE ROSER		NAME	
ANGLES ± -		APPD 5/5/93 CR RHODS		TERMINAL, RING TONGUE, COPALUM™, SEALED, WIRE SIZE: 71.3mm² [2/0] ALUMINUM 53.9mm² [1/0] COPPER	
MATERIAL		PRODUCT SPEC		SIZE	
SEE TABLE		108-11011 TENTATIVE		CAGE CODE	
FINISH		APPLICATION SPEC		DRAWING NO	
SEE TABLE		114-2134		C=55944	
WEIGHT		75.0 ± 5.0 GRAMS		SCALE	
				2:1	
				SHEET	
				1 OF 1	

THIS DRAWING IS A CONTROLLED DOCUMENT FOR AMP INCORPORATED. IT IS SUBJECT TO CHANGE AND THE CONTROLLING ENGINEERING ORGANIZATION SHOULD BE CONTACTED FOR THE LATEST REVISION.