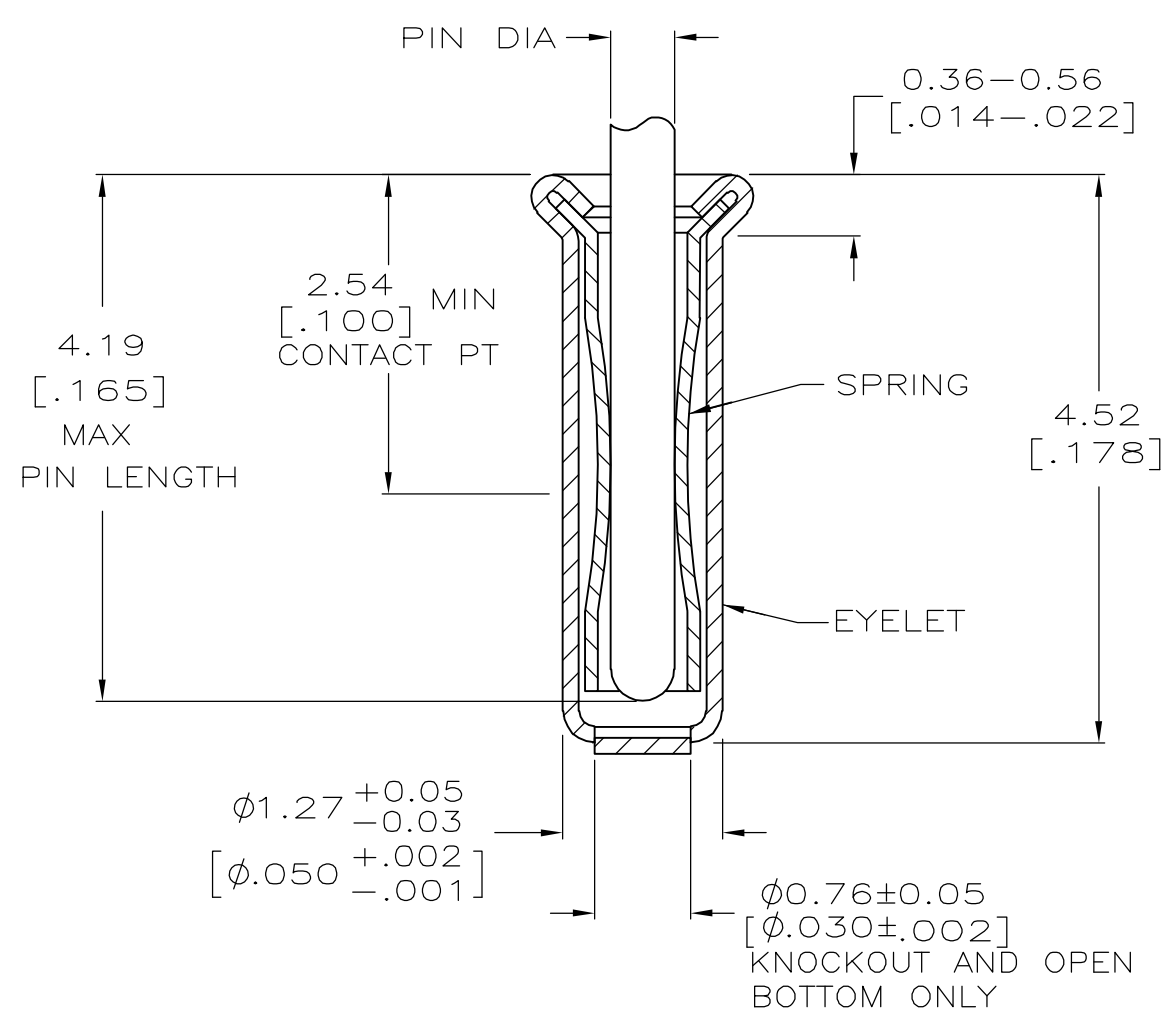
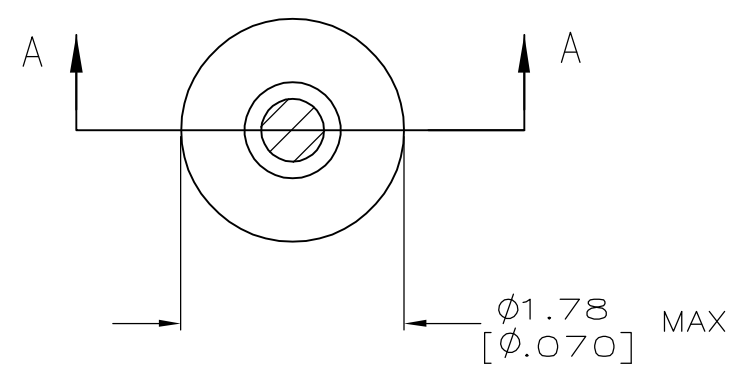


THIS DRAWING IS UNPUBLISHED. RELEASED FOR PUBLICATION  
 © COPYRIGHT BY TYCO ELECTRONICS CORPORATION. ALL RIGHTS RESERVED.

| LOC | DIST | REVISIONS |     |                       |         |     |      |
|-----|------|-----------|-----|-----------------------|---------|-----|------|
| GP  | 00   | P         | LTR | DESCRIPTION           | DATE    | DWN | APVD |
|     |      | AG1       |     | REV PER ECO-06-018765 | 13APR07 | DH  | DB   |



SECTION A-A

- 1. TIN PER MIL-T-10727 OR TIN LEAD .000254 [.000100] MIN THK.
- 2. GOLD PER MIL-G-45204, TYPE II, 0.00076 [.000030] MIN THK OVER NICKEL PER QQ-N-290 0.00028 [.000011] MIN THK ON CONTACT AREA.
- 3. GOLD FLASH PER MIL-G-45204, TYPE II, 0.13µm [.000005] MIN THK. OVER NICKEL PLATE PER QQ-N-290 0.51µm-1.52µm [.000020-.000060] EXT THK.
- 4. GOLD PER MIL-G-45204, TYPE II, 0.00127 [.000050] MIN THK.
- 5. GOLD PER MIL-G-45204, TYPE II, 0.00127 [.000050] MIN THK OVER NICKEL PER QQ-N-290 0.00127 [.000050] MIN THK ON CONTACT AREA.
- 6. RECOMMENDED HOLE SIZE, PLATED OR UNPLATED:  
 MACHINE INSERTION: 1.32 +0.08/-0.05 [.052 +.003/-0.002]  
 HAND INSERTION: 1.32 +0.10/-0.00 [.052 +.004/-0.000]
- 7. APPLICATION TOOL PART NUMBER:  
 MACHINE NO. 682127-3  
 INSERTION HEAD NO. 682039-2
- 8. TO INSURE PROPER SPRING TENSION DO NOT EXCEED A 0.10 [.004] DIFFERENCE IN PIN DIA WHEN CHANGING TO A SMALLER PIN.
- 9. BOTTOM PLUG KNOCKOUT TOOL PART NUMBER 69729 WITH TIP PART NUMBER 69728.
- 10. TIN PER ASTM B545, 0.00254 [.000100] MIN THK.
- 11. MATERIAL: SPRING: BERYLLIUM COPPER QQ-C-533  
 EYELET: COPPER, QQ-C-576

|                  |          |                       |        |        |           |
|------------------|----------|-----------------------|--------|--------|-----------|
| SUPSD BY 50462-8 | CLOSED   | 0.36-0.66 [.014-.026] | TIN 10 | TIN 10 | 6-50462-7 |
|                  | OPEN     |                       | GOLD 4 | GOLD 5 | 1-50462-5 |
| OBSOLETE         | CLOSED   | 0.36-0.66 [.014-.026] | TIN 1  | GOLD 2 | 50462-8   |
|                  |          |                       | GOLD 3 | TIN 1  | 50462-7   |
| OBSOLETE         | KNOCKOUT | 0.36-0.66 [.014-.026] | GOLD 3 | GOLD 2 | 50462-6   |
|                  |          |                       | TIN 1  | TIN 1  | 50462-5   |
| OBSOLETE         | OPEN     | 0.36-0.66 [.014-.026] | TIN 1  | TIN 1  | 50462-4   |
|                  |          |                       | GOLD 3 | GOLD 2 | 50462-2   |
| OBSOLETE         | OPEN     | 0.36-0.66 [.014-.026] | GOLD 3 | GOLD 2 | 50462     |
|                  |          |                       | EYELET | SPRING | PART NO   |
| BOTTOM TYPE      |          | RECOMMENDED PIN DIA 8 | FINISH |        |           |

|  |  |                      |   |                 |
|--|--|----------------------|---|-----------------|
| THIS DRAWING IS A CONTROLLED DOCUMENT. |  | DWN R. TALLEY 4-5-91 | Tyco Electronics Corporation<br>Harrisburg, Pa 17105-3608 |                 |
| DIMENSIONS: mm [INCHES]                | TOLERANCES UNLESS OTHERWISE SPECIFIED: | CHK -                | NAME  |                 |
|  | 0 PLC ± -                              | APVD -               | MINIATURE SPRING SOCKET ASSEMBLY, SERIES 2                |                 |
|  | 1 PLC ± -                              | PRODUCT SPEC -       |   |                 |
|  | 2 PLC ± -                              | APPLICATION SPEC -   |   |                 |
|  | 3 PLC ± 0.20 [.008]                    | WEIGHT -             | SIZE A3   | CAGE CODE 00779 |
|  | 4 PLC ± -                              |                      | DRAWING NO C-50462  | RESTRICTED TO - |
| MATERIAL - 11                          | FINISH -                               |                      | SCALE 20:1  | SHEET 1 OF 1    |
| CUSTOMER DRAWING                       |  |                      | REV AG1   |                 |