

Coaxial

Power Splitter/Combiner

ZN2PD-920+

2 Way-0° 50Ω 800 to 920 MHz



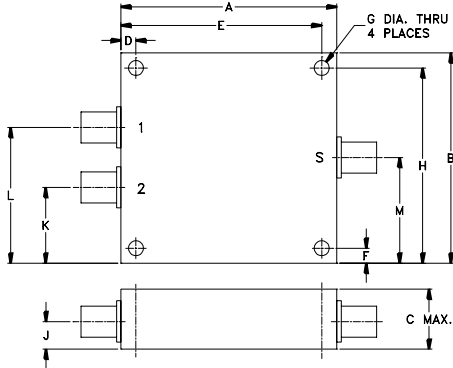
Maximum Ratings

Operating Temperature	-55°C to 100°C
Storage Temperature	-55°C to 100°C
Power Input (as a splitter)	10W max.
Internal Dissipation	0.125W max.

Coaxial Connections

SUM PORT	S
PORT 1	1
PORT 2	2

Outline Drawing



Outline Dimensions (inch/mm)

A	B	C	D	E	F	G	
1.80	1.75	.66	.125	1.675	.125	.125	
45.72	44.45	16.76	3.18	42.55	3.18	3.18	
H	J	K	L	M		wt	
1.625	.31	.63	1.13	.88		grams	
41.28	7.87	16.00	28.70	22.35		34	

Features

- low insertion loss, 0.15 dB typ.
- high isolation, 30 dB typ.
- up to 10W power input as a splitter
- excellent amplitude unbalance, 0.1 dB typ.
- excellent phase unbalance, 0.5 deg. typ.
- excellent VSWR, 1.05:1 typ.
- rugged shielded case

Applications

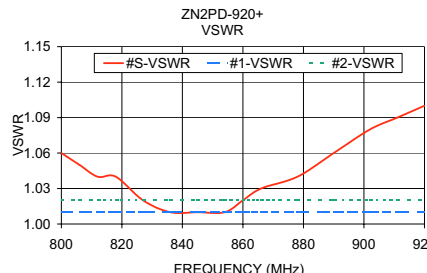
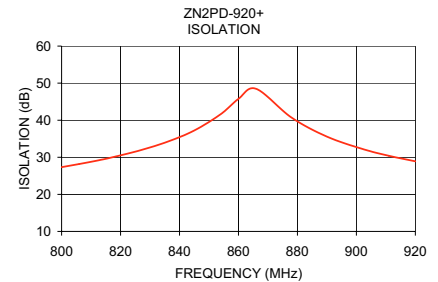
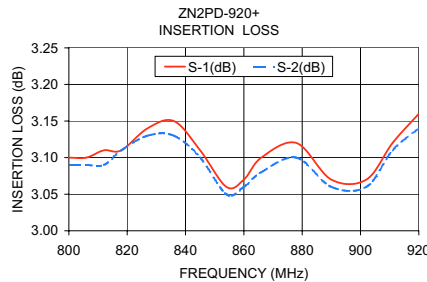
- UHF
- cellular
- communications systems
- instrumentations

Electrical Specifications

FREQ. RANGE (MHz)	ISOLATION (dB)		INSERTION LOSS (dB) ABOVE 3.0 dB		PHASE UNBALANCE (Degrees)	AMPLITUDE UNBALANCE (dB)	VSWR (:1)	
	Typ.	Min.	Typ.	Max.			S	OUT
$f_c - f_u$					Max.	Max.	Typ.	Max.
800-920	30	20	0.15	0.4	2	0.2	1.10	1.2
							1.04	1.2

Typical Performance Data

Frequency (MHz)	Insertion Loss (dB)		Amplitude Unbalance (dB)	Isolation (dB)	Phase Unbalance (deg.)	VSWR S	VSWR 1	VSWR 2
	S-1	S-2						
800.00	3.10	3.09	0.01	27.34	0.46	1.06	1.01	1.02
806.00	3.10	3.09	0.02	28.19	0.36	1.05	1.01	1.02
812.00	3.11	3.09	0.02	29.09	0.39	1.04	1.01	1.02
818.00	3.11	3.11	0.01	30.15	0.43	1.04	1.01	1.02
827.00	3.14	3.13	0.01	31.96	0.45	1.02	1.01	1.02
836.00	3.15	3.13	0.02	34.22	0.43	1.01	1.01	1.02
845.00	3.11	3.10	0.01	37.23	0.43	1.01	1.01	1.02
854.00	3.06	3.05	0.01	41.65	0.42	1.01	1.01	1.02
860.00	3.07	3.06	0.01	45.76	0.41	1.02	1.01	1.02
866.00	3.10	3.08	0.01	48.47	0.50	1.03	1.01	1.02
878.00	3.12	3.10	0.02	40.73	0.45	1.04	1.01	1.02
890.00	3.07	3.06	0.01	35.58	0.44	1.06	1.01	1.02
902.00	3.07	3.06	0.02	32.26	0.47	1.08	1.01	1.02
911.00	3.12	3.11	0.01	30.40	0.49	1.09	1.01	1.02
920.00	3.16	3.14	0.01	28.92	0.41	1.10	1.01	1.02



electrical schematic



Mini-Circuits®
ISO 9001 ISO 14001 CERTIFIED

ALL NEW
minicircuits.com

P.O. Box 350166, Brooklyn, New York 11235-0003 (718) 934-4500 Fax (718) 332-4661 For detailed performance specs & shopping online see Mini-Circuits web site



The Design Engineers Search Engine Provides ACTUAL Data Instantly From MINI-CIRCUITS At: www.minicircuits.com

RF/IF MICROWAVE COMPONENTS

REV. B
M113397
ZN2PD-920+
HY/TD/CP/AM
080610