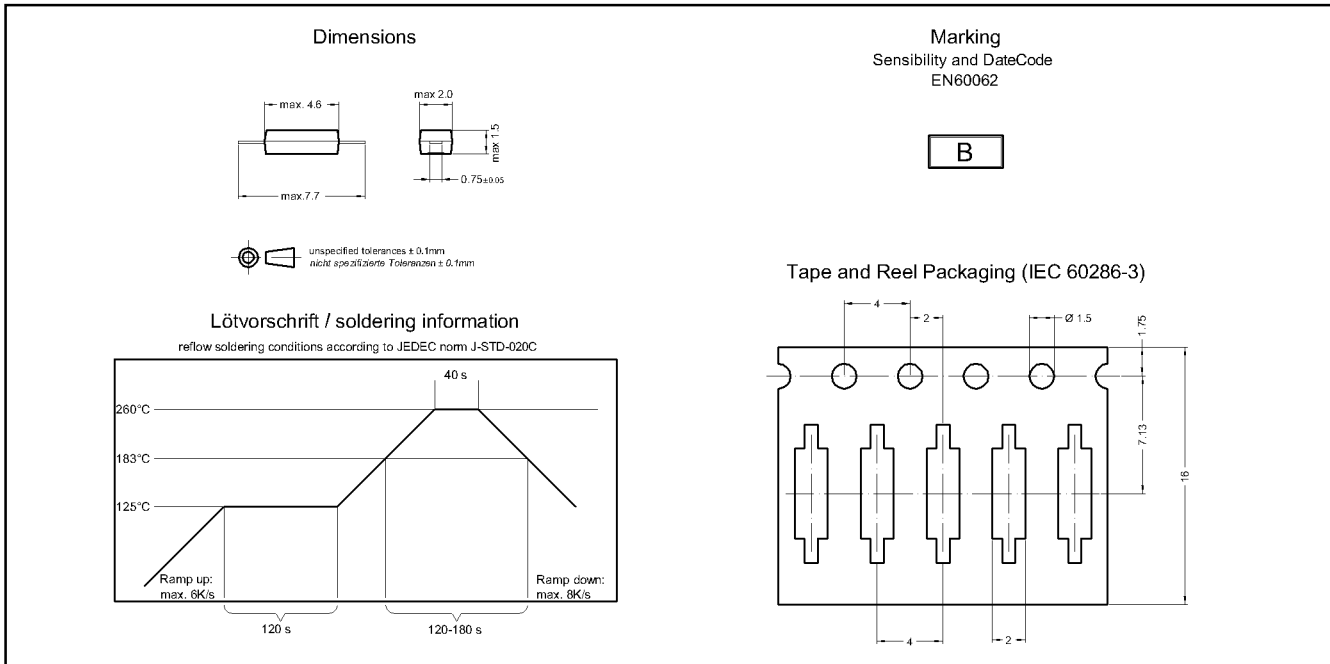


**preliminary datasheet**



Magnetic properties	Conditions	Min	Typ	Max	Unit
Pull-In	at 20 °C	36		86	
Test equipment		KMS-11			
Pull-In in milliTesla (modified conta	MS150 - phys. caused tolerance +/- 0,1mT	4		8	mT
Test equipment		MS-150			

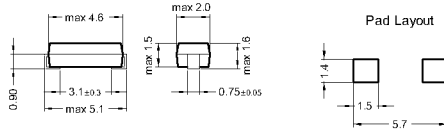
Contact data 34	Conditions	Min	Typ	Max	Unit
Contact-material		Ruthenium			
Contact rating	Any DC combination of V & A not to exceed their individual max.'s			3	W
Switching voltage	DC or Peak AC			5	V
Switching current	DC or Peak AC			0,5	A
Contact resistance static	Measured with 40% overdrive Start Value			300	mOhm
Insulation resistance	RH <45 %, 100 V test voltage	1			GOhm
Breakdown voltage	according to IEC 255-5	100			VDC

Special Product Data	Conditions	Min	Typ	Max	Unit
Housing material		epoxy resin			

Environmental data	Conditions	Min	Typ	Max	Unit
Shock	1/2 sine wave duration 11ms			30	g
Vibration	from 10 - 2000 Hz			20	g
Operating temperature		-40		130	°C
Storage temperature		-50		130	°C
Washability		fully sealed			

### preliminary datasheet

#### Dimensions



Pad Layout

unspecified tolerances ± 0.1mm  
 nicht spezifizierte Toleranzen ± 0.1mm

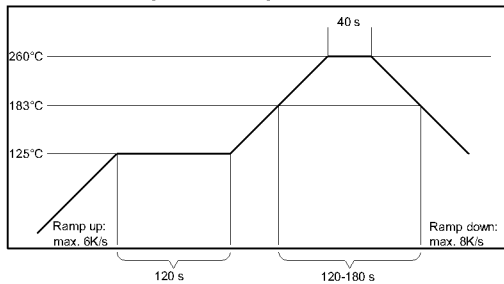
#### Marking

Sensibility and DateCode  
 EN60062

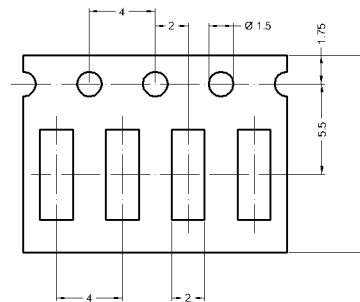


#### Lötvorschrift / soldering information

reflow soldering conditions according to JEDEC norm J-STD-020C



#### Tape and Reel Packaging (IEC 60286-3)



Magnetic properties	Conditions	Min	Typ	Max	Unit
Pull-In	at 20°C	36		86	
Test equipment		KMS-11			
Pull-In in milliTesla (modified conta	MS150 - phys. caused tolerance +/- 0.1mT	4		8	mT
Test equipment		MS-150			

Contact data 34	Conditions	Min	Typ	Max	Unit
Contact-material		Ruthenium			
Contact rating	Any DC combination of V & A not to exceed their individual max.'s			3	W
Switching voltage	DC or Peak AC			5	V
Switching current	DC or Peak AC			0,5	A
Contact resistance static	Measured with 40% overdrive Start Value			300	mOhm
Insulation resistance	RH <45 %, 100 V test voltage	1			GOhm
Breakdown voltage	according to IEC 255-5	100			VDC

Special Product Data	Conditions	Min	Typ	Max	Unit
Housing material		epoxy resin			

Environmental data	Conditions	Min	Typ	Max	Unit
Shock	1/2 sine wave duration 11ms			30	g
Vibration	from 10 - 2000 Hz			20	g
Operating temperature		-40		130	°C
Storage temperature		-50		130	°C
Washability		fully sealed			