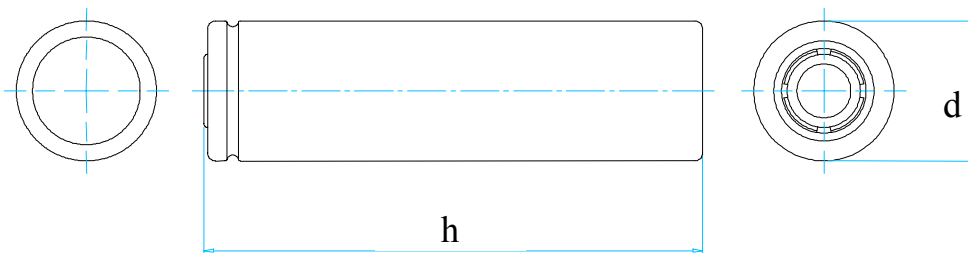


### Preliminary Data Sheet



<b>Nominal Voltage:</b> .....	3.7 V	<b>Height</b> .....	<b>h.</b> 65.0	mm
<b>Rated Capacity (0.2C / 2.75 V):</b> .....	2150 mAh	<b>Diameter</b> .....	<b>d.</b> 18.3	-0.6 mm
<b>Typical Capacity (0.2C / 2.75 V):</b> .....	2200 mAh			-0.4

**Max Charge Voltage:** ..... 4.20 V

**Volume:** ..... 16.83 cm<sup>3</sup>

www.DataSheet4U.com

**Max Charge Current:** ..... 2200 mA

**Weight, approx:** ..... 46 g

**Max Discharge Current:** ..... 4000 mA

**Energy Density:** ..... 484 Wh/l

**Impedance AC at 1kHz, fully charged:** .... 100 mOhm

**Specific Energy:** ..... 177 Wh/kg

#### Charge Conditions at:

**Standard Charge:** ..... 1100mA 3h

#### Temperatures:

**Storage: -20 up to +60°C.....** 1 month

**Fast Charge:** ..... 2200mA 2.5h

**Storage: -20 up to +45°C.....** 3 month

**Storage: -20 up to +20°C.....** 1 year

#### Life Expectancy at Cycling:

>300 cycles (0.5C/0.5C): >70% of rated capacity

**Charge:** ..... 0°C ... 45°C

**Discharge:** ..... -20°C ... 60°C

All data contained herein is for single cells.

For battery applications, performance data may vary from single cell data, depending on specific battery configuration.