

**PLEASE CHECK WWW.MOLEX.COM FOR LATEST PART INFORMATION**

**Part Number:** [0877922116](#)  
**Status:** **Active**  
**Description:** 2.00mm (.079") Pitch Board-to-Board Panel Detachable PCB Header, Surface Mount, 16 Circuits, Gold (Au) Selective Plating, with Pick-and-Place Cap, Tape-and-Reel Packaging, Lead-free

**Documents:**

[Drawing \(PDF\)](#) [RoHS Certificate of Compliance \(PDF\)](#)  
[Product Specification PS-87791-014 \(PDF\)](#)

**General**

Product Family	PCB Headers
Series	<a href="#">87792</a>
Application	Board-to-Board
Comments	Panel Detachable
Product Name	N/A

**Physical**

Breakaway	No
Circuits (Loaded)	16
Circuits (maximum)	16
Durability (mating cycles max)	15,000
First Mate / Last Break	No
Glow-Wire Compliant	No
Guide to Mating Part	No
Keying to Mating Part	None
Lock to Mating Part	None
Mated Height (in)	0.309 In
Mated Height (mm)	7.85 mm
Material - Plating Mating	Gold
Material - Plating Termination	Tin
Number of Rows	2
Orientation	Vertical
PCB Locator	Yes
PCB Retention	None
PCB Thickness Recommended (in)	0.062 In
PCB Thickness Recommended (mm)	1.60 mm
Packaging Type	Embossed Tape on Reel
Pitch - Mating Interface (in)	0.079 In
Pitch - Mating Interface (mm)	2.00 mm
Polarized to Mating Part	No
Polarized to PCB	No
Robotic Placement	Pick and Place Cap
Shrouded	No
Stackable	No
Surface Mount Compatible (SMC)	N/A
Temperature Range - Operating	-25°C to +70°C
Termination Interface: Style	Surface Mount

**Electrical**

Current - Maximum per Contact	1A
Voltage - Maximum	125V

**Material Info**

**Reference - Drawing Numbers**

Product Specification PS-87791-014, RPS-87791-005



*image - Reference only*

Series

**EU RoHS**

**ELV and RoHS  
Compliant**  
**REACH SVHC**  
 Not Reviewed  
**Halogen-Free  
Status**

**China RoHS**



**Not Reviewed**  
**Need more information on product  
environmental compliance?**

Email [productcompliance@molex.com](mailto:productcompliance@molex.com)  
 For a multiple part number RoHS Certificate of Compliance, [click here](#)

Please visit the [Contact Us](#) section for any non-product compliance questions.

**Search Parts in this Series**

[87792Series](#)

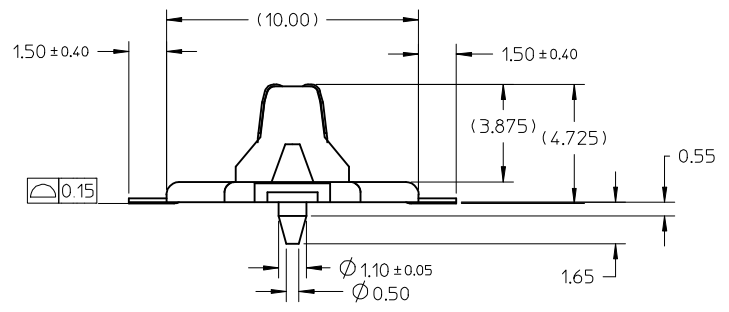
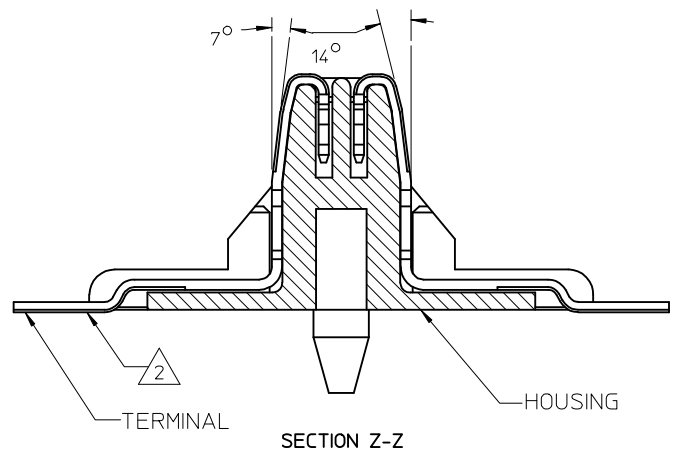
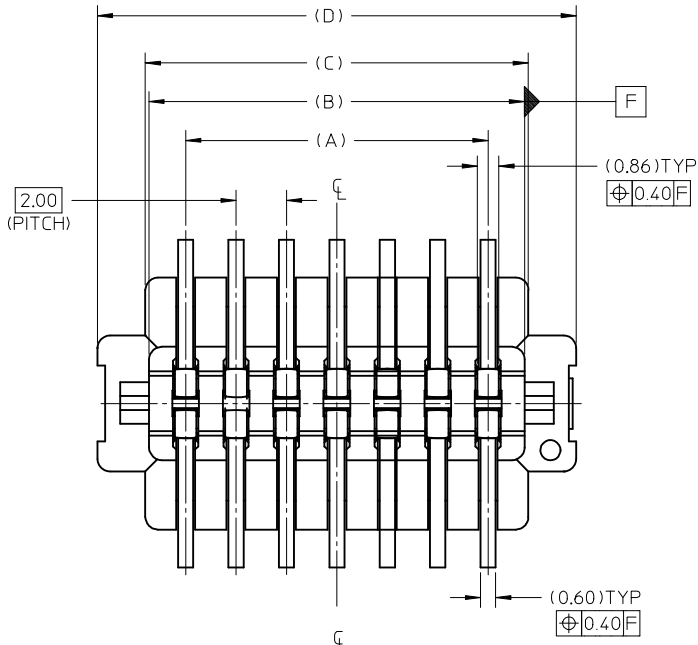
**Mates With**

[877910116](#) Board-to-Board Panel Detachable

This document was generated on 04/19/2010

**PLEASE CHECK [WWW.MOLEX.COM](http://WWW.MOLEX.COM) FOR LATEST PART INFORMATION**

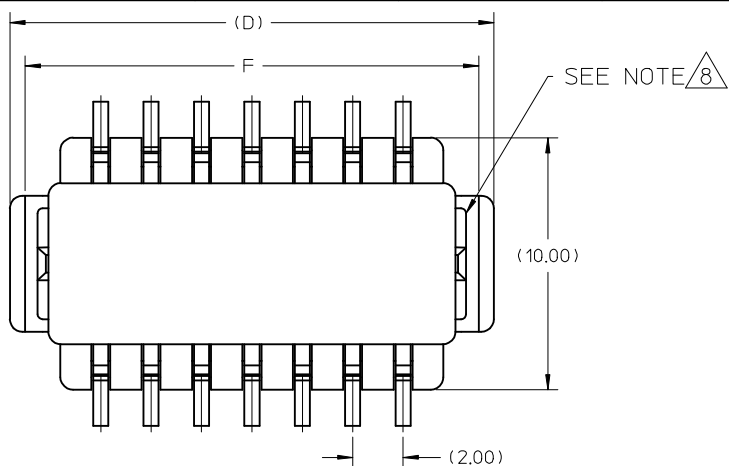
PLATING OPTION	ASSEMBLY P/N WITHOUT CAP IN TUBE	CKT SIZE	A	B	C	D	E
Au PLATING CONTACT AND TIN AT SOLDER TAIL	87792-0114	14	12.00	14.90	15.20	19.00	16.00
	87792-0116	16	14.00	16.90	17.20	21.00	18.00
	-	20	18.00	20.90	21.20	25.00	22.00



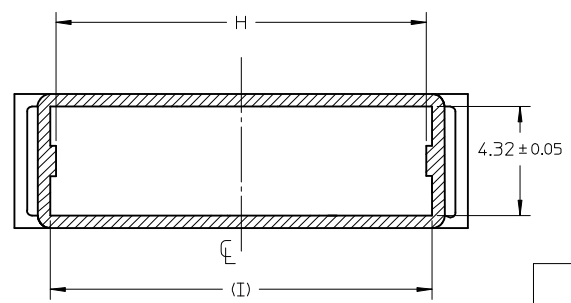
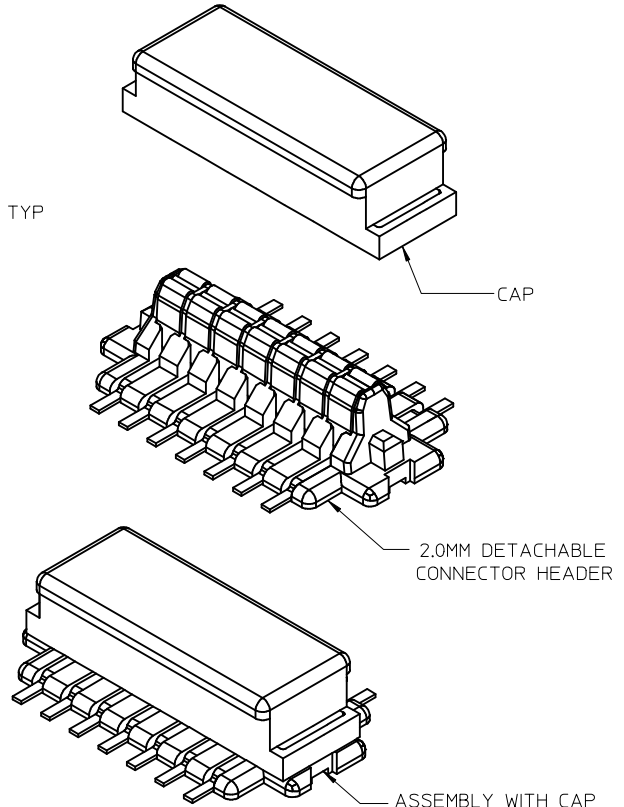
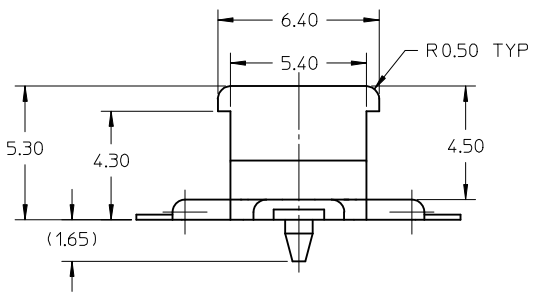
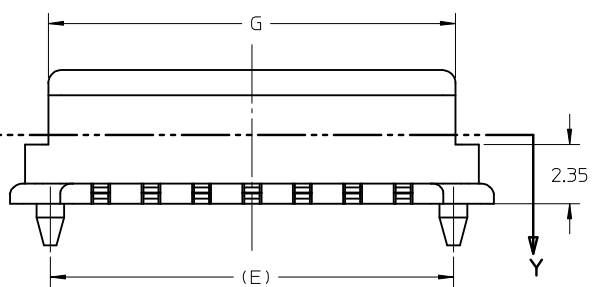
- NOTES:
- MATERIALS :  
HOUSING : PA46, UL94V-0, COLOR : BLACK  
CAP : PA46, UL94V-0, COLOR: BIEGE.  
MAXIMUM REGRIND ALLOWABLE FOR CAP IS 100%.  
TERMINAL : PHOSPHOR BRONZE.  
EMBOSSD TAPE AND REEL : BLACK POLYSTYRENE CONDUCTIVE.
  - PLATING : SEE TABLE.
  - MATING PARTS REFERENCE : 87791-0\*\*\* or 87793-0\*\*\*
  - REFER TO PRODUCT SPEC. PS-87791-014 FOR PERFORMANCE SPEC.
  - CONTACT AND SOLDER TAIL AREAS MUST BE FREE FROM CUTTING BURR.
  - NO SPECIFIC REQUIREMENT - OF APPEARANCE/ COSMETIC TO THE CAP.
  - CAP COVER RETENTION FORCE BEFORE RESISTANCE TO SOLDERING HEAT: 350gf MIN..  
△ MAXIMUM ALLOWABLE OF FLASH AT SLOT IS 0.20MM. MAX.

<b>UPDATE DIMENSION</b> EC NO: S2008-0498 DRW: NAI SEE 2008/09/25 CHK: DSKANG 2008/09/26 APPR: MLONG 2008/09/26	<b>QUALITY SYMBOLS</b> ▽=0 ◻=0	<b>GENERAL TOLERANCES (UNLESS SPECIFIED)</b>		<b>DIMENSION STYLE</b> MM ONLY	<b>SCALE</b> NTS	<b>DESIGN UNITS</b> METRIC	THIRD ANGLE PROJECTION	
		mm	INCH	<b>DRAWN BY</b> CGOH	<b>DATE</b> 2004/08/05	<b>TITLE</b> 2.0 B/B CONN. PLUG SMT (PANEL DETACHABLE TYPE) IN TUBE AND T&R		
		4 PLACES ± --- ± ---	3 PLACES ± --- ± ---	<b>CHECKED BY</b> PTL IM	<b>DATE</b> 2004/10/01	<b>MOLEX INCORPORATED</b>		
		2 PLACES ± 0.25 ± ---	1 PLACE ± --- ± ---	<b>APPROVED BY</b> SLOW	<b>DATE</b> 2004/11/01	<b>MATERIAL NO.</b> SEE TABLE	<b>DOCUMENT NO.</b> SD-87792-005	<b>SHEET NO.</b> 1 OF 4
ANGULAR ± 3 °		DRAFT WHERE APPLICABLE MUST REMAIN WITHIN DIMENSIONS		THIS DRAWING CONTAINS INFORMATION THAT IS PROPRIETARY TO MOLEX INCORPORATED AND SHOULD NOT BE USED WITHOUT WRITTEN PERMISSION				

10 9 8 7 6 5 4 3 2 1



PLATING OPTION	ASSEMBLY P/N WITH CAP IN TUBE	CAP P/N	CKT	F	G	H	I
Au PLATING AT CONTACT AREA AND TIN AT SOLDER TAIL	87792-114	87792-0003	14	18.20	16.15	14.70	15.15
	87792-116	87792-0004	16	20.20	18.15	16.70	17.15
	87792-120	87792-0005	20	24.20	22.15	20.70	21.15



SECTION Y-Y  
(COVER ONLY)

REV	DESCRIPTION
U	UPDATE DIMENSION
	EC NO: S2008-0498
	DRWNATSEE 2008/09/25
	CHKD:SKANG 2008/09/26
	APPR:MLONG 2008/09/26

QUALITY SYMBOLS	VALUE
	=0
	=0

GENERAL TOLERANCES (UNLESS SPECIFIED)	
	mm INCH
4 PLACES	± --- ± ---
3 PLACES	± --- ± ---
2 PLACES	± 0.25 ± ---
1 PLACE	± --- ± ---
ANGULAR ± 3 °	

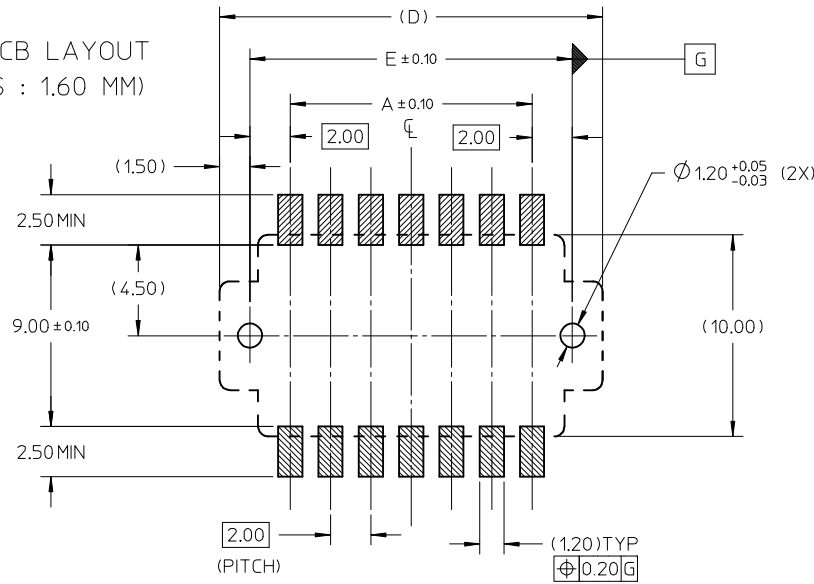
DRAFT WHERE APPLICABLE MUST REMAIN WITHIN DIMENSIONS

DIMENSION STYLE	
MM ONLY	
DRAWN BY	DATE
CGOH	2004/08/05
CHECKED BY	DATE
PTL IM	2004/10/01
APPROVED BY	DATE
SCLOW	2004/11/01
MATERIAL NO.	SEE TABLE

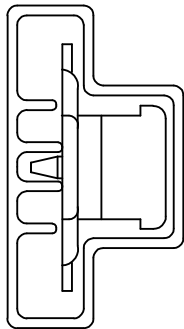
SCALE	DESIGN UNITS	THIRD ANGLE PROJECTION
NTS	METRIC	
TITLE		
2.0 B/B CONN. PLUG SMT (PANEL DETACHABLE TYPE) IN TUBE AND T&R		
MOLEX INCORPORATED		
MATERIAL NO.	DOCUMENT NO.	SHEET NO.
SEE TABLE	SD-87792-005	2 OF 4

9 8 7 6 5 4 3 2 1

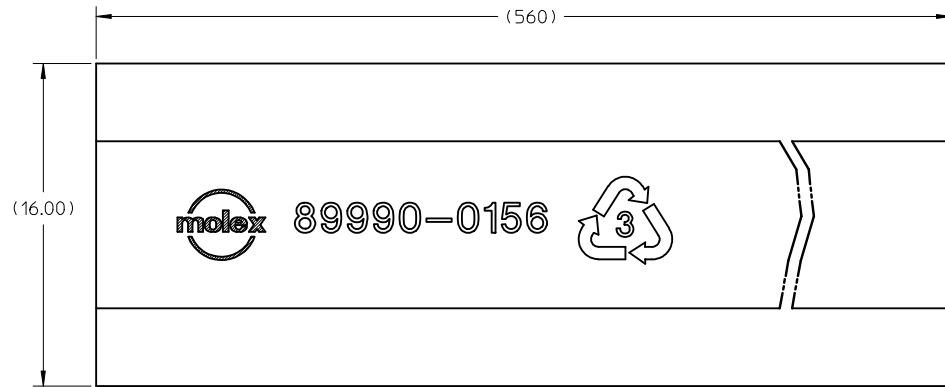
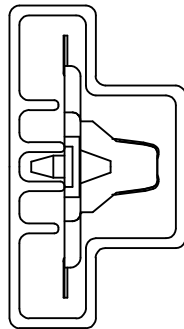
RECOMMENDED PCB LAYOUT  
(PCB THICKNESS : 1.60 MM)



ASSEMBLY WITH CAP  
IN TUBE



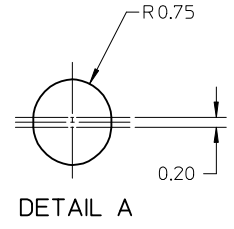
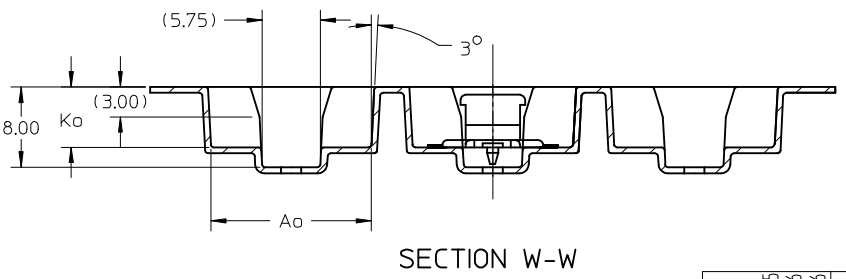
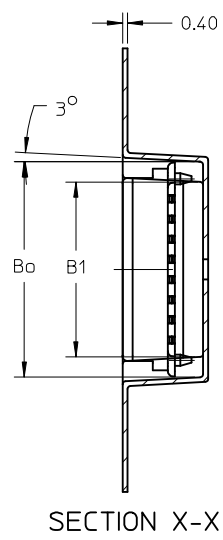
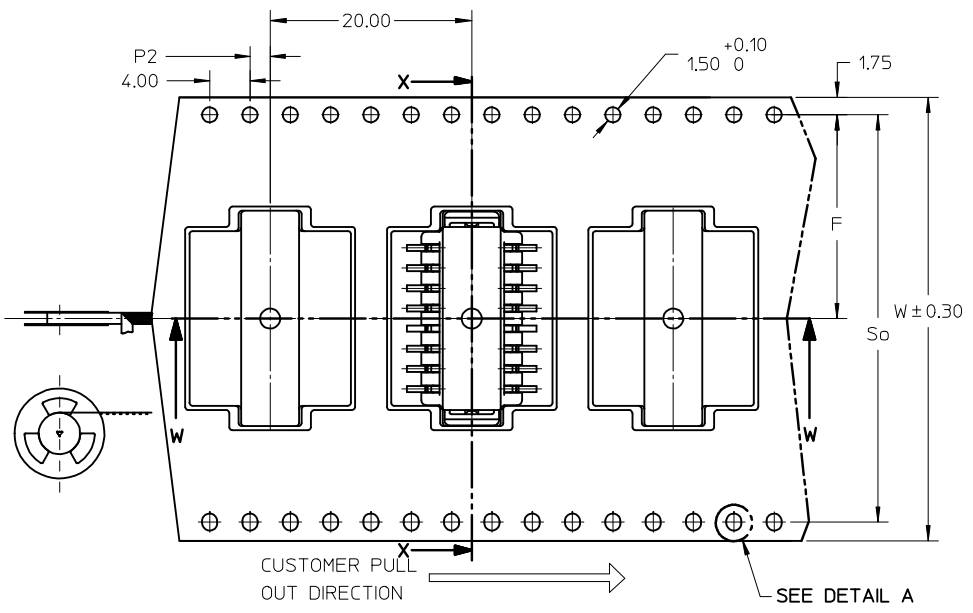
ASSEMBLY WITHOUT  
CAP IN TUBE



UPDATE DIMENSION EC NO: S2008-0498 DRWN:ATSEE 2008/09/25 CHKD:SKANG 2008/09/26 APPR:MLONG 2008/09/26	QUALITY SYMBOLS ▽=0 ◻=0	GENERAL TOLERANCES (UNLESS SPECIFIED)		DIMENSION STYLE MM ONLY	SCALE NTS	DESIGN UNITS METRIC	THIRD ANGLE PROJECTION		
			mm	INCH	DRAWN BY CGOH	DATE 2004/08/05	TITLE 2.0 B/B CONN. PLUG SMT (PANEL DETACHABLE TYPE) IN TUBE AND T&R		
		4 PLACES	± ---	± ---	CHECKED BY PTLIM	DATE 2004/10/01	MOLEX INCORPORATED		
		2 PLACES	± 0.25	± ---	APPROVED BY SCLOW	DATE 2004/11/01	DOCUMENT NO. SD-87792-005	SHEET NO. 3 OF 4	
			1 PLACE	± ---	± ---	DRAFT WHERE APPLICABLE MUST REMAIN WITHIN DIMENSIONS			
			ANGULAR ± 3 °		MATERIAL NO. SEE TABLE	THIS DRAWING CONTAINS INFORMATION THAT IS PROPRIETARY TO MOLEX INCORPORATED AND SHOULD NOT BE USED WITHOUT WRITTEN PERMISSION			

TAPE AND REEL DETAIL

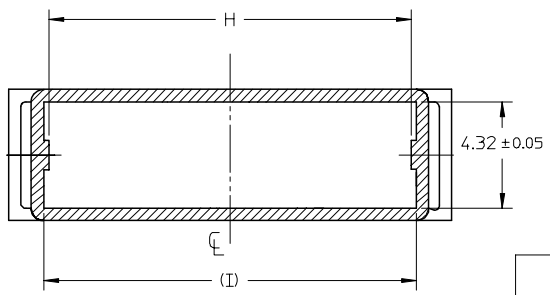
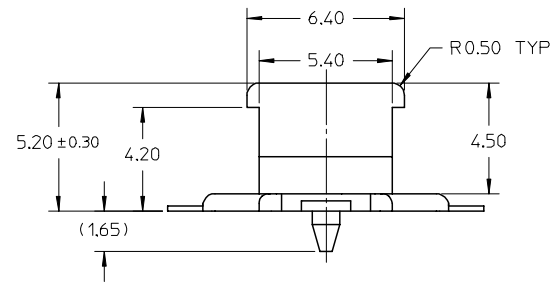
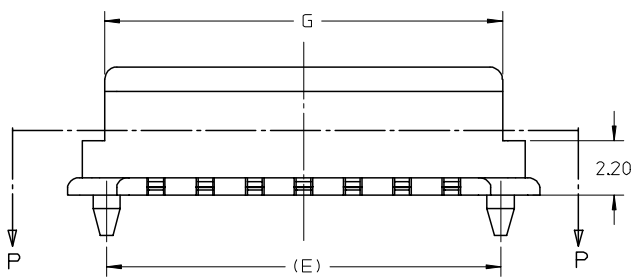
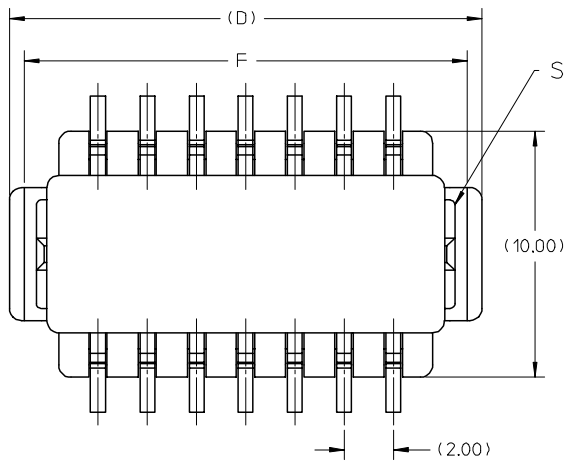
PLATING OPTION	ASSEMBLY P/N WITH CAP IN TAPE & REEL	CKT SIZE	F	Bo	B1	So	W	Ao	Ko	P2
Au PLATING AT CONTACT AREA AND TIN AT SOLDER TAIL	87792-2116	16	20.20	21.35	17.35	40.40	44.00	15.90	6.00	2.00
	87792-2120	20		25.35	21.35					



NOTES:

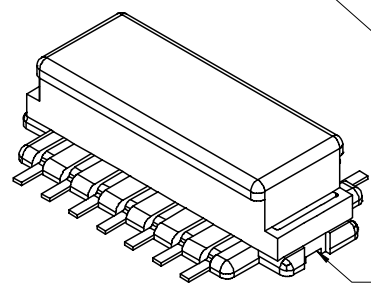
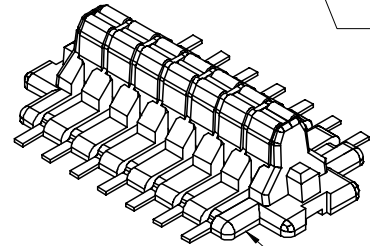
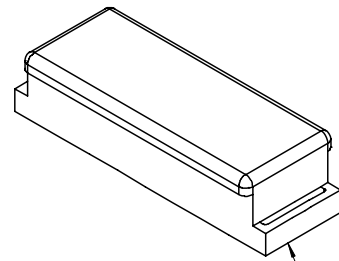
- LEADER AND TRAILER TAPE  
 160 MIN. TOP TAPE TRAILER  
 390 MIN. TOP TAPE NON BONDED TAPE  
 160 MIN. TAIL PART (EMPTY)  
 230 MIN. LEADER PART (EMPTY)  
 PULL OUT DIRECTION
- PEELING OFF FORCE OF THE TOP TAPE: 20 - 80gf.  
 (PEELING DIRECTION AS SHOWN IN FOLLOWING FIGURE)  
 15° MAX.  
 PEEL OFF DIRECTION  
 PULL OUT DIRECTION
- TAPE AND REEL SPECIFICATION IS AS PER EIA-481.
- TAPE AND REEL QUANTITY : 520 PCS/ REEL
- THE TAPE IS TREATED FOR ANTI-STATIC.

UPATE DIMENSION EC NO: S2008-0498 DRWN:ATSEE 2008/09/25 CHKD:SKANG 2008/09/26 APPR:MLONG 2008/09/26	QUALITY SYMBOLS	GENERAL TOLERANCES (UNLESS SPECIFIED)	DIMENSION STYLE	SCALE	DESIGN UNITS	THIRD ANGLE PROJECTION
	▼=0 □=0	mm INCH 4 PLACES ± --- ± --- 3 PLACES ± --- ± --- 2 PLACES ± 0.25 ± --- 1 PLACE ± --- ± --- ANGULAR ± 3°	MM ONLY	NTS	METRIC	☉ □ THIRD ANGLE PROJECTION
	DESCRIPTION	DRAFT WHERE APPLICABLE MUST REMAIN WITHIN DIMENSIONS	DRAWN BY CGOH DATE 2004/08/05 CHECKED BY PTL IM DATE 2004/10/01 APPROVED BY SCLOW DATE 2004/11/01 MATERIAL NO. SEE TABLE	TITLE	2.0 B/B CONN. PLUG SMT (PANEL DETACHABLE TYPE) IN TUBE AND T&R MOLEX INCORPORATED	
	REV		SIZE A3	THIS DRAWING CONTAINS INFORMATION THAT IS PROPRIETARY TO MOLEX INCORPORATED AND SHOULD NOT BE USED WITHOUT WRITTEN PERMISSION		DOCUMENT NO. SD-87792-005 SHEET NO. 4 OF 4



SECTION P-P  
(COVER ONLY)

PLATING OPTION	ASSEMBLY P/N WITH CAP IN TUBE		CKT	F	G	H	I
	CAP P/N						
Au PLATING AT CONTACT AREA AND TIN/LEAD AT SOLDER TAIL	87792-1014	87792-0003	14	18.20	16.15	14.70	15.15
	87792-1016	87792-0004	16	20.20	18.15	16.70	17.15
Au PLATING AT CONTACT AREA AND TIN AT SOLDER TAIL	87792-1114	87792-0003	14	18.20	16.15	14.70	15.15
	87792-1116	87792-0004	16	20.20	18.15	16.70	17.15
	87792-1120	87792-0005	20	24.20	22.15	20.70	21.15



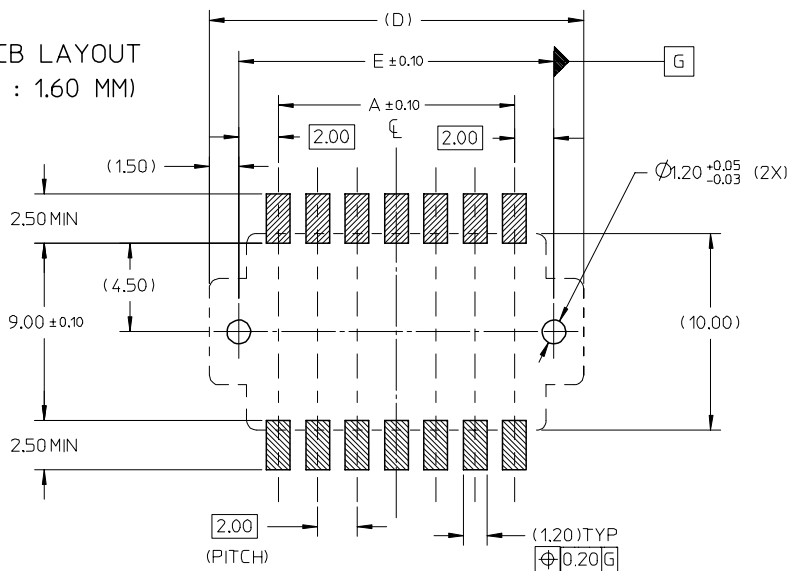
CAP

2.0MM DETACHABLE CONNECTOR HEADER

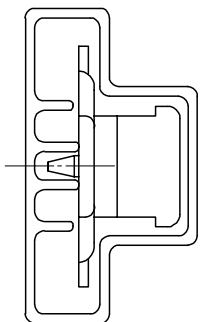
ASSEMBLY WITH CAP

REVISED PER EC NO: S2006-0838 DRWN:CGOH CHKD:NAGESHKN APPR:PTLIM 2006/07/12 2006/07/12 2006/07/12	QUALITY SYMBOLS	GENERAL TOLERANCES (UNLESS SPECIFIED)	DIMENSION STYLE	SCALE	DESIGN UNITS	THIRD ANGLE PROJECTION															
	$\nabla=0$ $\sphericalangle=0$	<table border="1"> <thead> <tr> <th></th> <th>mm</th> <th>INCH</th> </tr> </thead> <tbody> <tr> <td>4 PLACES</td> <td>± ---</td> <td>± ---</td> </tr> <tr> <td>3 PLACES</td> <td>± ---</td> <td>± ---</td> </tr> <tr> <td>2 PLACES</td> <td>± 0.25</td> <td>± ---</td> </tr> <tr> <td>1 PLACE</td> <td>± ---</td> <td>± ---</td> </tr> </tbody> </table>		mm	INCH	4 PLACES	± ---	± ---	3 PLACES	± ---	± ---	2 PLACES	± 0.25	± ---	1 PLACE	± ---	± ---	MM ONLY	NTS	METRIC	
		mm	INCH																		
	4 PLACES	± ---	± ---																		
	3 PLACES	± ---	± ---																		
2 PLACES	± 0.25	± ---																			
1 PLACE	± ---	± ---																			
DESCRIPTION	DRAFT WHERE APPLICABLE MUST REMAIN WITHIN DIMENSIONS	<table border="1"> <thead> <tr> <th>DRAWN BY</th> <th>DATE</th> <th>TITLE</th> </tr> </thead> <tbody> <tr> <td>CGOH</td> <td>2004/08/05</td> <td rowspan="2">2.0 B/B CONN. PLUG SMT (PANEL DETACHABLE TYPE) IN TUBE AND T&amp;R</td> </tr> <tr> <td>PTLIM</td> <td>2004/10/01</td> </tr> <tr> <th>APPROVED BY</th> <th>DATE</th> <th></th> </tr> <tr> <td>SCLOW</td> <td>2004/11/01</td> <td></td> </tr> </tbody> </table>	DRAWN BY	DATE	TITLE	CGOH	2004/08/05	2.0 B/B CONN. PLUG SMT (PANEL DETACHABLE TYPE) IN TUBE AND T&R	PTLIM	2004/10/01	APPROVED BY	DATE		SCLOW	2004/11/01		MOLEX INCORPORATED				
DRAWN BY	DATE	TITLE																			
CGOH	2004/08/05	2.0 B/B CONN. PLUG SMT (PANEL DETACHABLE TYPE) IN TUBE AND T&R																			
PTLIM	2004/10/01																				
APPROVED BY	DATE																				
SCLOW	2004/11/01																				
REV	SIZE	SEE TABLE	DOCUMENT NO.	SHEET NO.																	
B5	A3	THIS DRAWING CONTAINS INFORMATION THAT IS PROPRIETARY TO MOLEX INCORPORATED AND SHOULD NOT BE USED WITHOUT WRITTEN PERMISSION	SD-87792-005	2 OF 4																	

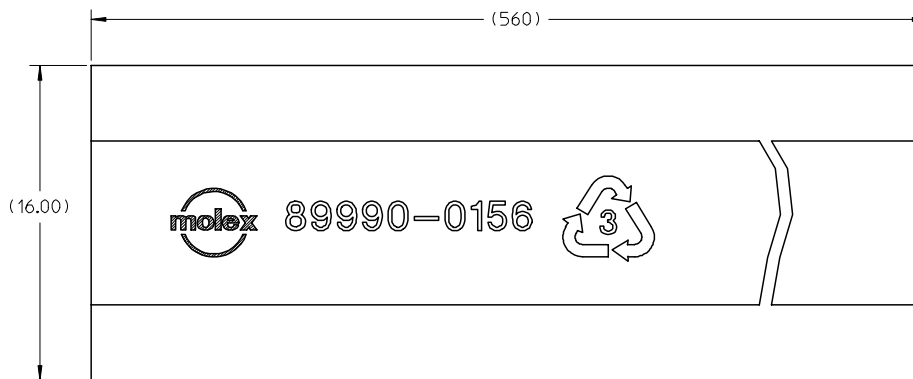
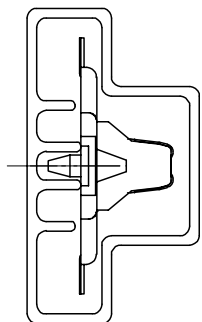
RECOMMENDED PCB LAYOUT  
(PCB THICKNESS : 1.60 MM)



ASSEMBLY WITH CAP  
IN TUBE



ASSEMBLY WITHOUT  
CAP IN TUBE

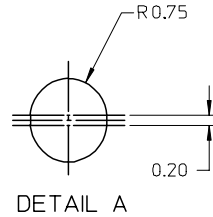
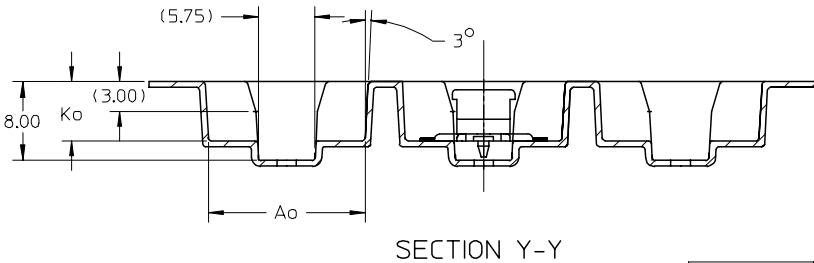
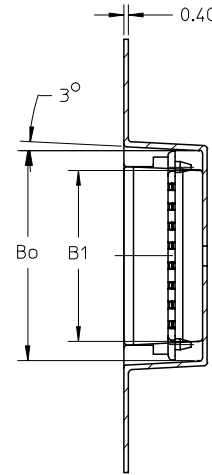
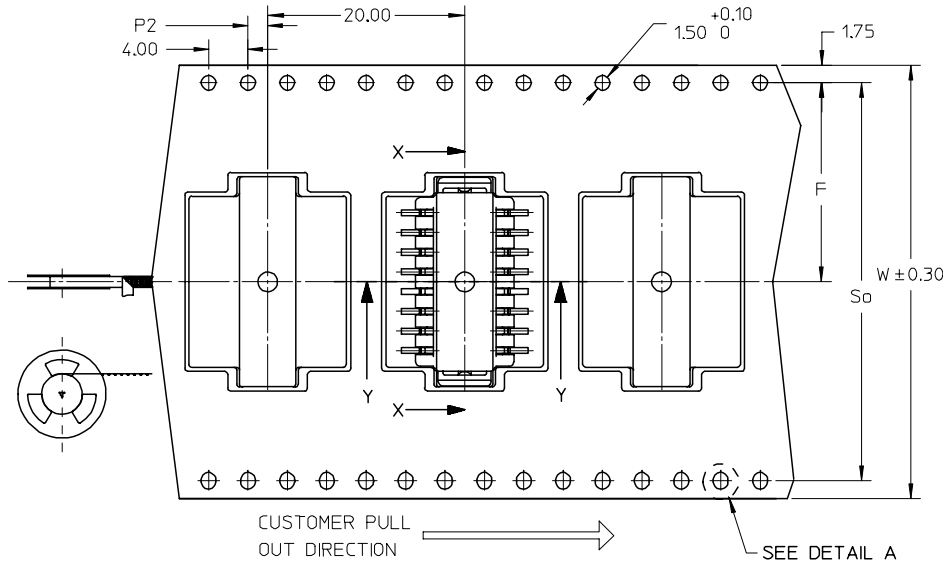


REVISED PER EC NO: S2006-0838 DRWN:CGOH CHKD:NAGESHKN APPR:PTLIM 2006/07/12 2006/07/12 2006/07/12	QUALITY SYMBOLS ▽=0 ∇=0	GENERAL TOLERANCES (UNLESS SPECIFIED)		DIMENSION STYLE MM ONLY		SCALE NTS	DESIGN UNITS METRIC	THIRD ANGLE PROJECTION		
			mm	INCH	DRAWN BY	DATE	TITLE 2.0 B/B CONN. PLUG SMT (PANEL DETACHABLE TYPE) IN TUBE AND T&R			
		4 PLACES	± ---	± ---	CGOH	2004/08/05	MOLEX INCORPORATED			
		3 PLACES	± ---	± ---	CHECKED BY	DATE	DOCUMENT NO. SD-87792-005			
2 PLACES	± 0.25	± ---	PTLIM	2004/10/01	SHEET NO. 3 OF 4					
1 PLACE	± ---	± ---	APPROVED BY	DATE	THIS DRAWING CONTAINS INFORMATION THAT IS PROPRIETARY TO MOLEX INCORPORATED AND SHOULD NOT BE USED WITHOUT WRITTEN PERMISSION					
DRAFT WHERE APPLICABLE MUST REMAIN WITHIN DIMENSIONS		ANGULAR ± 3 °		MATERIAL NO. SEE TABLE		SIZE A3				



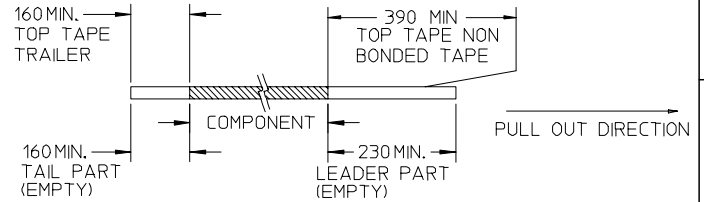
TAPE AND REEL DETAIL

PLATING OPTION	ASSEMBLY P/N WITH CAP IN TAPE & REEL	CKT SIZE	F	Bo	B1	So	W	Ao	Ko	P2
Au PLATING AT CONTACT AREA AND TIN/LEAD AT SOLDER TAIL	87792-2016	16		21.35	17.35					
Au PLATING AT CONTACT AREA AND TIN AT SOLDER TAIL	87792-2116	20	20.20	21.35	17.35	40.40	44.00	15.90	6.00	2.00
	87792-2120			25.35	21.35					

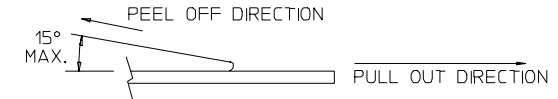


NOTES:

1. LEADER AND TRAILER TAPE



2. PEELING OFF FORCE OF THE TOP TAPE: 20 - 80gf. (PEELING DIRECTION AS SHOWN IN FOLLOWING FIGURE)



3. TAPE AND REEL SPECIFICATION IS AS PER EIA-481.

4. TAPE AND REEL QUANTITY : 520 PCS/ REEL

5. THE TAPE IS TREATED FOR ANTI-STATIC.

REVISED PER EC NO: S2006-0838 DRWN: CGOH CHKD: NAGESHKN APPR: PTLIM 2006/07/12 2006/07/12 2006/07/12	QUALITY SYMBOLS	GENERAL TOLERANCES (UNLESS SPECIFIED)	DIMENSION STYLE	SCALE	DESIGN UNITS	THIRD ANGLE PROJECTION	
	▽=0 ▽=0	mm    INCH 4 PLACES ± --- ± --- 3 PLACES ± --- ± --- 2 PLACES ± 0.25 ± --- 1 PLACE ± --- ± --- ANGULAR ± 3 °	MM ONLY	NTS	METRIC	DRAWN BY DATE CGOH 2004/08/05 CHECKED BY DATE PTLIM 2004/10/01 APPROVED BY DATE SCLOW 2004/11/01	
		DRAFT WHERE APPLICABLE MUST REMAIN WITHIN DIMENSIONS	SEE TABLE	TITLE		2.0 B/B CONN. PLUG SMT (PANEL DETACHABLE TYPE) IN TUBE AND T&R MOLEX INCORPORATED	
	B5			MATERIAL NO.	DOCUMENT NO.	SHEET NO.	