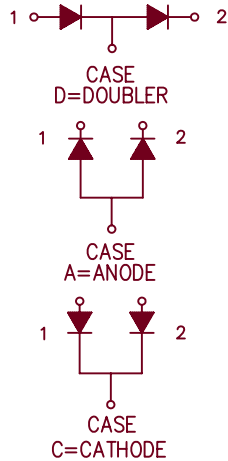
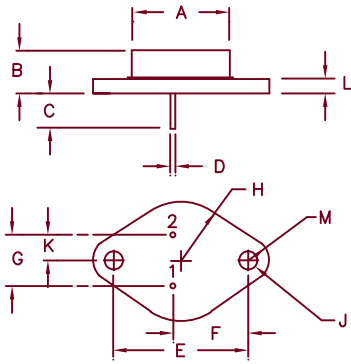


# Schottky Rectifier SBT3060



Dim.	Inches		Millimeter		Notes
	Minimum	Maximum	Minimum	Maximum	
A	—	.875	—	22.23	Dia.
B	.250	.450	6.35	11.43	
C	.435	—	11.05	—	
D	.038	.043	.97	1.09	Dia.
E	1.177	1.197	29.90	30.40	
F	.655	.675	16.64	17.15	
G	.420	.440	10.67	11.18	
H	—	.525	—	13.34	Rad.
J	.151	.161	3.84	4.09	Dia.
K	.205	.225	5.21	5.72	
L	—	.135	—	3.43	
M	—	.188	—	4.78	Rad.

TO-204AA (TO-3)

Microsemi Catalog Number	Working Peak Reverse Voltage	Repetitive Peak Reverse Voltage
SBT3060*	60V	60V

\*ADD D, C, or A

- Schottky Barrier Rectifier
- Guard Ring Protection
- $V_{RRM}$  60V
- 30 Amperes/package
- Reverse Energy Tested

## Electrical Characteristics Per Leg

Average forward current (standard)	$I_{F(AV)}$ 15 Amps	$T_C = 159^\circ\text{C}$ , Square wave, $R_{\theta JC} = 1.4^\circ\text{C/W}$
Average forward current (reverse)	$I_{F(AV)}$ 15 Amps	$T_C = 150^\circ\text{C}$ , Square wave, $R_{\theta JC} = 2.2^\circ\text{C/W}$
Maximum surge current	$I_{FSM}$ 600 Amps	8.3 ms, half sine $T_J = 175^\circ\text{C}$
Max repetitive peak reverse current	$I_{R(OV)}$ 2 Amps	$f = 1\text{ KHz}$ , $25^\circ\text{C}$ , 1 $\mu\text{sec}$ Square wave
Typical forward voltage	$V_{FM}$ 0.60 Volts	$I_{FM} = 30\text{A}$ : $T_J = 175^\circ\text{C}^*$
Max peak forward voltage	$V_{FM}$ 0.74 Volts	$I_{FM} = 30\text{A}$ : $T_J = 25^\circ\text{C}^*$
Max peak reverse current	$I_{RM}$ 25 mA	$V_{RRM}$ , $T_J = 125^\circ\text{C}^*$
Max peak reverse current	$I_{RM}$ 1.5 mA	$V_{RRM}$ , $T_J = 25^\circ\text{C}$
Typical junction capacitance per leg	$C_J$ 1200 pF	$V_R = 5.0\text{V}$ , $T_J = 25^\circ\text{C}$

\*Pulse test: Pulse width 300  $\mu\text{sec}$ , Duty cycle 2%

## Thermal and Mechanical Characteristics

Storage temp range	$T_{STG}$	$-65^\circ\text{C}$ to $175^\circ\text{C}$
Operating junction temp range	$T_J$	$-65^\circ\text{C}$ to $175^\circ\text{C}$
Maximum thermal resistance (standard polarity)	$R_{\theta JC}$	$1.4^\circ\text{C/W}$ Junction to case
Maximum thermal resistance (reverse polarity)	$R_{\theta JC}$	$2.2^\circ\text{C/W}$ Case to sink
Typical thermal resistance (greased)	$R_{\theta CS}$	$0.5^\circ\text{C/W}$ Junction to case
Weight		1.0 ounces (28 grams) typical



6 Lake Street  
Lawrence, MA 01841  
PH: (978) 620-2600  
FAX: (978) 689-0803  
[www.microsemi.com](http://www.microsemi.com)

05-30-07 Rev. 2

# SBT3060

Figure 1  
Typical Forward Characteristics—Per Leg

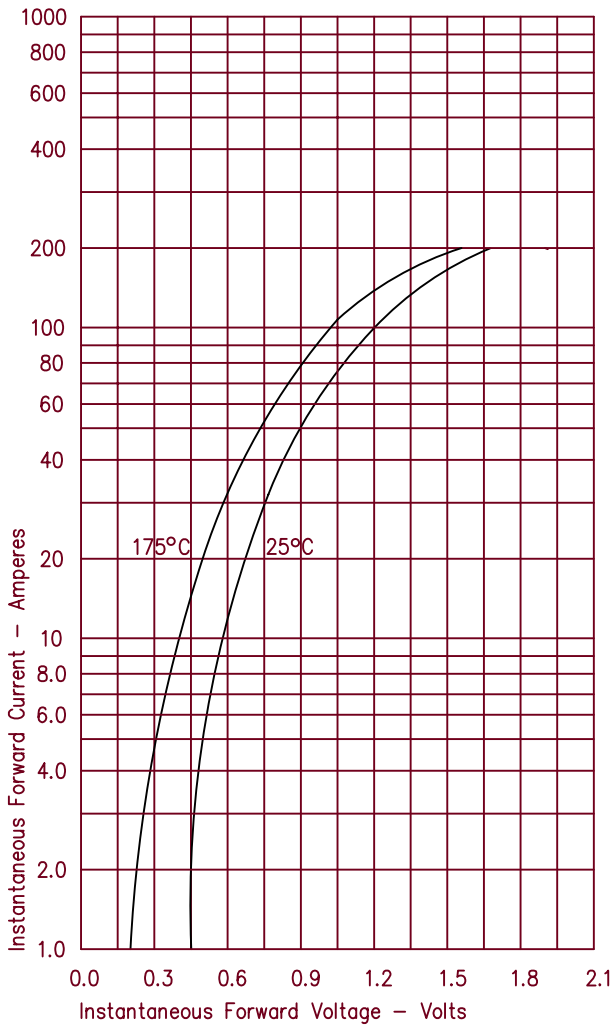


Figure 3  
Typical Junction Capacitance—Per Leg

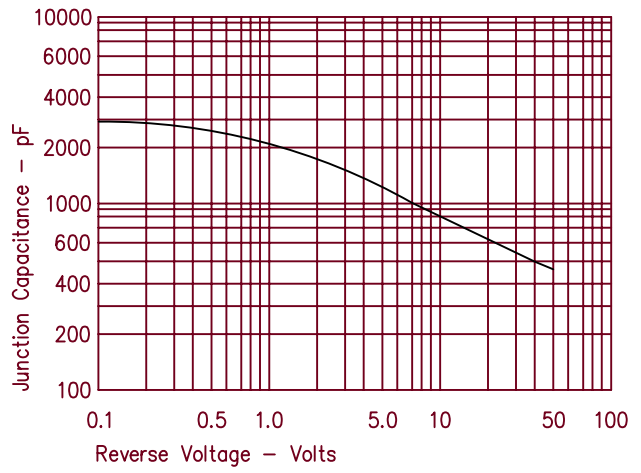


Figure 4  
Forward Current Derating—Per Leg (Standard Polarity)

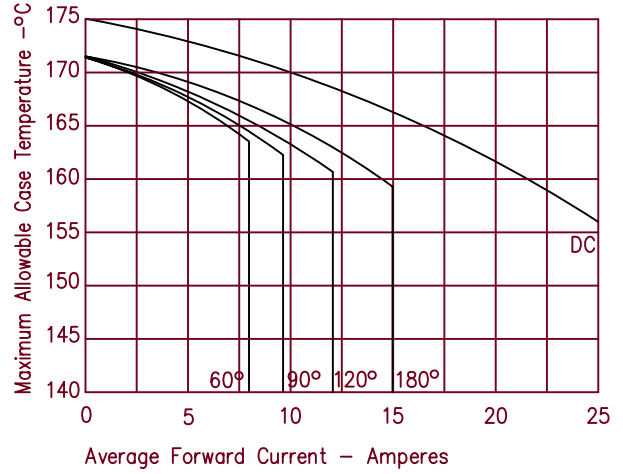


Figure 2  
Typical Reverse Characteristics—Per Leg

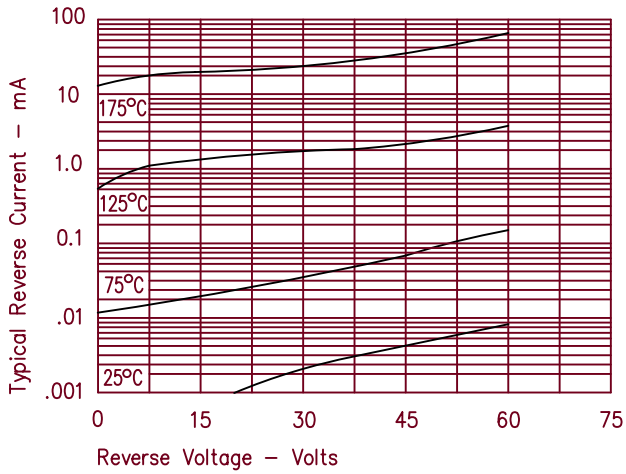
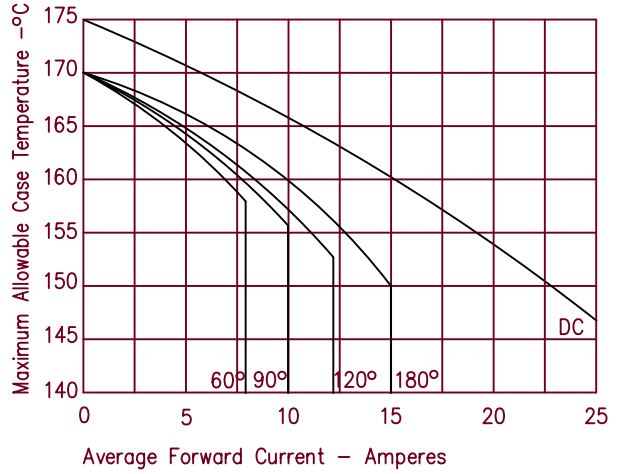


Figure 5  
Forward Current Derating—Per Leg (Reverse Polarity)



# SBT3060

Figure 6  
Maximum Forward Power Dissipation—Per Leg

