

SEMiX201GD066HDs



SEMiX[®] 13

Trench IGBT Modules

SEMiX201GD066HDs

Features

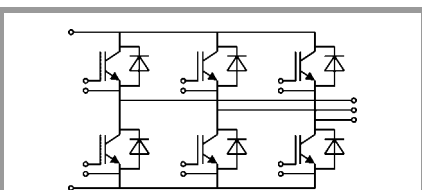
- Homogeneous Si
- Trench = Trenchgate technology
- $V_{CE(sat)}$ with positive temperature coefficient
- UL recognised file no. E63532

Typical Applications*

- Matrix Converter
- Resonant Inverter
- Current Source Inverter

Remarks

- Case temperature limited to $T_C=125^{\circ}\text{C}$ max.
- Product reliability results are valid for $T_j=150^{\circ}\text{C}$
- For short circuit: Soft R_{Goff} recommended
- Take care of over-voltage caused by stray inductance



GD

| Absolute Maximum Ratings | | | | |
|--------------------------|---|-----------------------------|-------------|--------------------|
| Symbol | Conditions | | Values | Unit |
| IGBT | | | | |
| V_{CES} | | | 600 | V |
| I_C | $T_j = 175^{\circ}\text{C}$ | $T_c = 25^{\circ}\text{C}$ | 259 | A |
| | | $T_c = 80^{\circ}\text{C}$ | 196 | A |
| I_{Cnom} | | | 200 | A |
| I_{CRM} | $I_{CRM} = 2 \times I_{Cnom}$ | | 400 | A |
| V_{GES} | | | -20 ... 20 | V |
| t_{psc} | $V_{CC} = 360\text{ V}$ $V_{GE} \leq 15\text{ V}$ $V_{CES} \leq 600\text{ V}$ | $T_j = 150^{\circ}\text{C}$ | 6 | μs |
| | | | | |
| T_j | | | -40 ... 175 | $^{\circ}\text{C}$ |
| Inverse diode | | | | |
| I_F | $T_j = 175^{\circ}\text{C}$ | $T_c = 25^{\circ}\text{C}$ | 284 | A |
| | | $T_c = 80^{\circ}\text{C}$ | 208 | A |
| I_{Fnom} | | | 200 | A |
| I_{FRM} | $I_{FRM} = 2 \times I_{Fnom}$ | | 400 | A |
| I_{FSM} | $t_p = 10\text{ ms, sin } 180^{\circ}, T_j = 25^{\circ}\text{C}$ | | 1300 | A |
| T_j | | | -40 ... 175 | $^{\circ}\text{C}$ |
| Module | | | | |
| $I_{t(RMS)}$ | | | 600 | A |
| T_{stg} | | | -40 ... 125 | $^{\circ}\text{C}$ |
| V_{isol} | AC sinus 50Hz, $t = 1\text{ min}$ | | 4000 | V |

| Characteristics | | | | | | |
|-----------------|--|-----------------------------|------|------|------|------------------|
| Symbol | Conditions | | min. | typ. | max. | Unit |
| IGBT | | | | | | |
| $V_{CE(sat)}$ | $I_C = 200\text{ A}$ $V_{GE} = 15\text{ V}$ chipelevel | $T_j = 25^{\circ}\text{C}$ | 1.45 | 1.85 | | V |
| | | $T_j = 150^{\circ}\text{C}$ | 1.7 | 2.1 | | V |
| V_{CE0} | | $T_j = 25^{\circ}\text{C}$ | 0.9 | 1 | | V |
| | | $T_j = 150^{\circ}\text{C}$ | 0.85 | 0.9 | | V |
| r_{CE} | $V_{GE} = 15\text{ V}$ | $T_j = 25^{\circ}\text{C}$ | 2.8 | 4.3 | | $\text{m}\Omega$ |
| | | $T_j = 150^{\circ}\text{C}$ | 4.3 | 6.0 | | $\text{m}\Omega$ |
| $V_{GE(th)}$ | $V_{GE}=V_{CE}, I_C = 3.2\text{ mA}$ | | 5 | 5.8 | 6.5 | V |
| I_{CES} | $V_{GE} = 0\text{ V}$ $V_{CE} = 600\text{ V}$ | $T_j = 25^{\circ}\text{C}$ | 0.15 | 0.45 | | mA |
| | | $T_j = 150^{\circ}\text{C}$ | | | | mA |
| C_{ies} | $V_{CE} = 25\text{ V}$ $V_{GE} = 0\text{ V}$ | $f = 1\text{ MHz}$ | | 12.3 | | nF |
| C_{oes} | | $f = 1\text{ MHz}$ | | 0.77 | | nF |
| C_{res} | | $f = 1\text{ MHz}$ | | 0.37 | | nF |
| Q_G | $V_{GE} = -8\text{ V...}+15\text{ V}$ | | | 1600 | | nC |
| R_{Gint} | $T_j = 25^{\circ}\text{C}$ | | | 2.00 | | Ω |
| $t_{d(on)}$ | $V_{CC} = 300\text{ V}$ $I_C = 200\text{ A}$ | $T_j = 150^{\circ}\text{C}$ | | 180 | | ns |
| t_r | | $T_j = 150^{\circ}\text{C}$ | | 55 | | ns |
| E_{on} | $R_{Gon} = 3\text{ }\Omega$ $R_{Goff} = 3\text{ }\Omega$ | $T_j = 150^{\circ}\text{C}$ | | 5 | | mJ |
| $t_{d(off)}$ | | $T_j = 150^{\circ}\text{C}$ | | 500 | | ns |
| t_f | | $T_j = 150^{\circ}\text{C}$ | | 55 | | ns |
| E_{off} | | | | 8 | | mJ |
| $R_{th(j-c)}$ | per IGBT | | | | 0.23 | K/W |



SEMiX® 13

Trench IGBT Modules

SEMiX201GD066HDs

Features

- Homogeneous Si
- Trench = Trenchgate technology
- $V_{CE(sat)}$ with positive temperature coefficient
- UL recognised file no. E63532

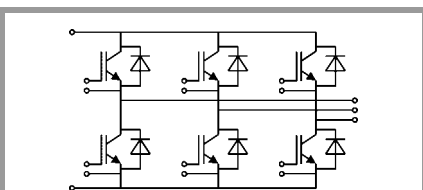
Typical Applications*

- Matrix Converter
- Resonant Inverter
- Current Source Inverter

Remarks

- Case temperature limited to $T_C=125^\circ\text{C}$ max.
- Product reliability results are valid for $T_j=150^\circ\text{C}$
- For short circuit: Soft R_{Goff} recommended
- Take care of over-voltage caused by stray inductance

| Characteristics | | | | | | |
|--------------------------|--|---------------------------|------|----------------|------|---------------|
| Symbol | Conditions | | min. | typ. | max. | Unit |
| Inverse diode | | | | | | |
| $V_F = V_{EC}$ | $I_F = 200\text{ A}$ $V_{GE} = 0\text{ V}$ chip | $T_j = 25^\circ\text{C}$ | | 1.4 | 1.60 | V |
| | | $T_j = 150^\circ\text{C}$ | | 1.4 | 1.6 | V |
| V_{F0} | | $T_j = 25^\circ\text{C}$ | 0.9 | 1 | 1.1 | V |
| | | $T_j = 150^\circ\text{C}$ | 0.75 | 0.85 | 0.95 | V |
| r_F | | $T_j = 25^\circ\text{C}$ | 1.5 | 2.0 | 2.5 | m Ω |
| | | $T_j = 150^\circ\text{C}$ | 2.3 | 2.8 | 3.3 | m Ω |
| I_{RRM} | $I_F = 200\text{ A}$ $di/dt_{off} = 3900\text{ A}/\mu\text{s}$ $V_{GE} = -8\text{ V}$ $V_{CC} = 300\text{ V}$ | $T_j = 150^\circ\text{C}$ | | 200 | | A |
| Q_{rr} | | $T_j = 150^\circ\text{C}$ | | 32 | | μC |
| E_{rr} | | $T_j = 150^\circ\text{C}$ | | | 7.5 | |
| $R_{th(j-c)}$ | per diode | | | | 0.28 | K/W |
| Module | | | | | | |
| L_{CE} | | | | 20 | | nH |
| $R_{CC'+EE'}$ | res., terminal-chip | $T_C = 25^\circ\text{C}$ | | 0.7 | | m Ω |
| | | $T_C = 125^\circ\text{C}$ | | 1 | | m Ω |
| $R_{th(c-s)}$ | per module | | | 0.04 | | K/W |
| M_s | to heat sink (M5) | | 3 | | 5 | Nm |
| M_t | | to terminals (M6) | 2.5 | | 5 | Nm |
| | | | | | | Nm |
| w | | | | | 350 | g |
| Temperatur Sensor | | | | | | |
| R_{100} | $T_C=100^\circ\text{C}$ ($R_{25}=5\text{ k}\Omega$) | | | $493 \pm 5\%$ | | Ω |
| $B_{100/125}$ | $R_{(T)}=R_{100}\exp[B_{100/125}(1/T-1/T_{100})]$; $T[\text{K}]$; | | | $3550 \pm 2\%$ | | K |



GD

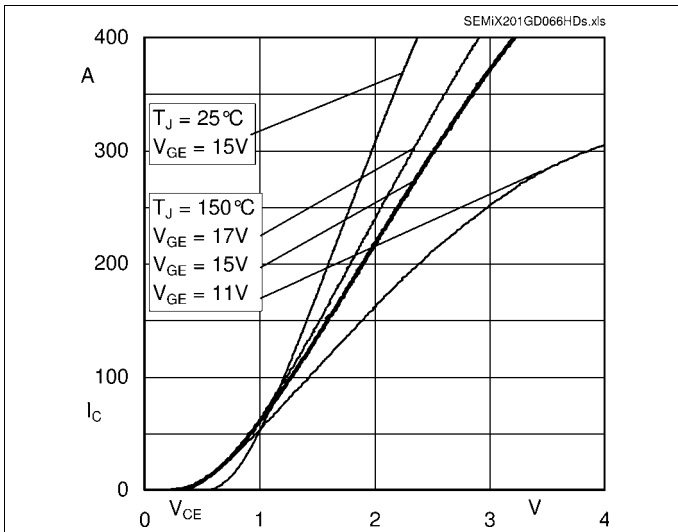


Fig. 1: Typ. output characteristic, inclusive $R_{CC'+EE'}$

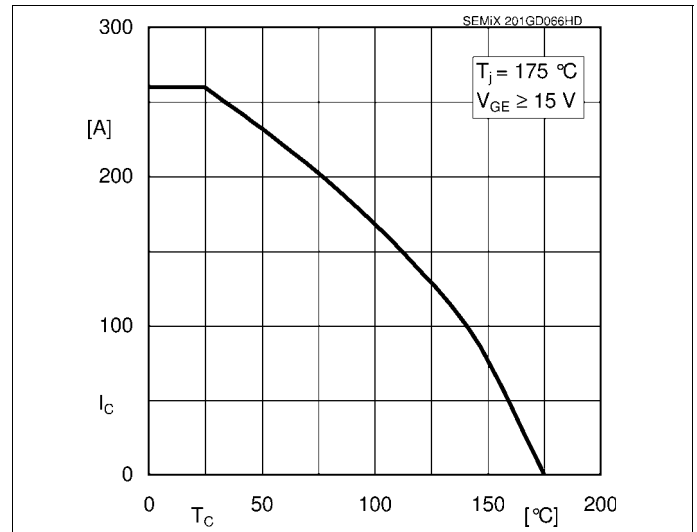


Fig. 2: Rated current vs. temperature $I_C = f(T_C)$

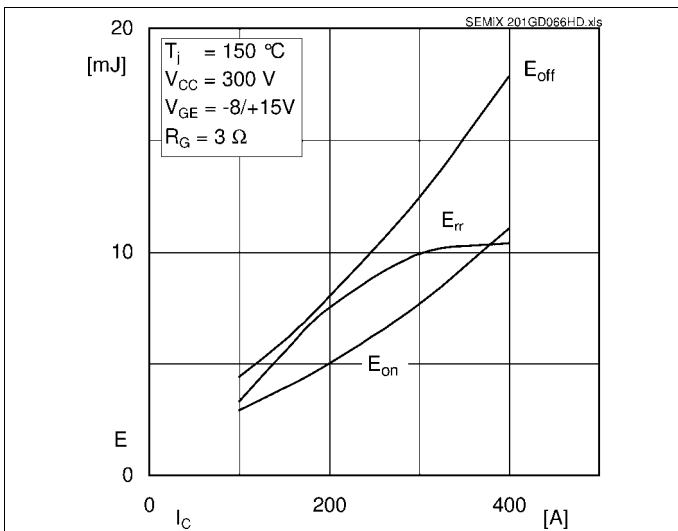


Fig. 3: Typ. turn-on /-off energy = $f(I_C)$

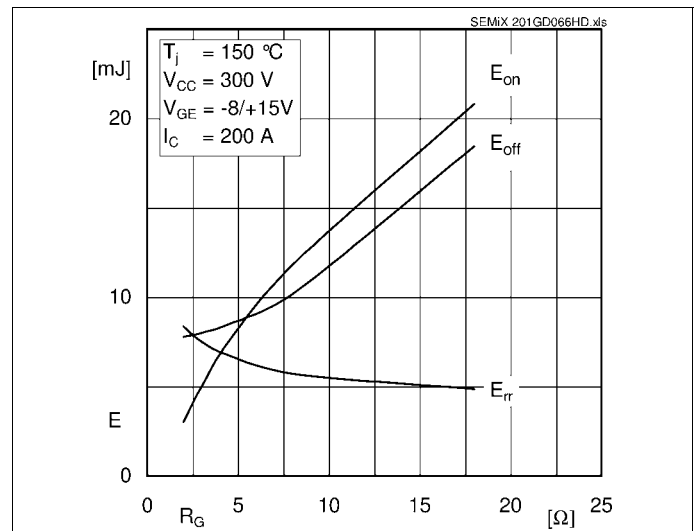


Fig. 4: Typ. turn-on /-off energy = $f(R_G)$

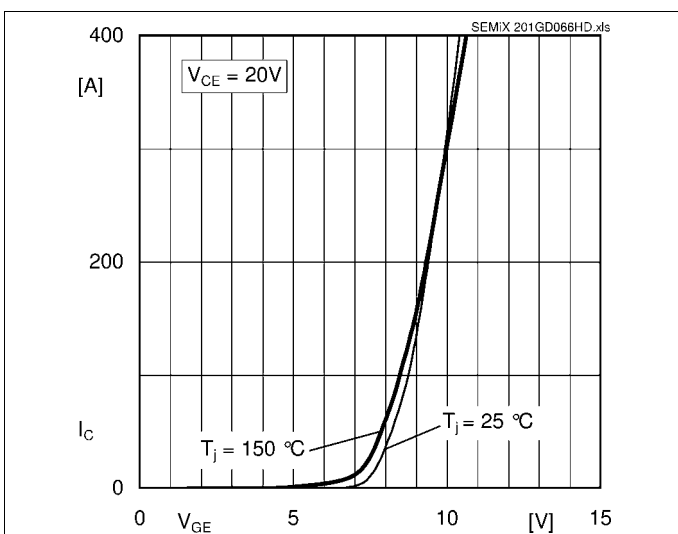


Fig. 5: Typ. transfer characteristic

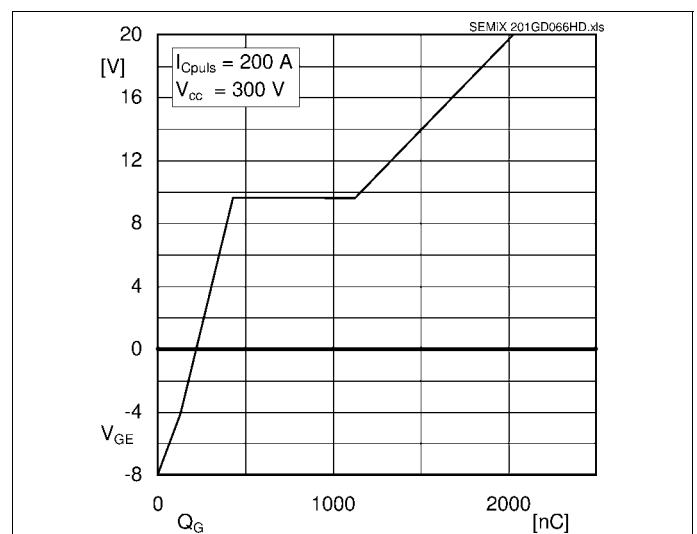
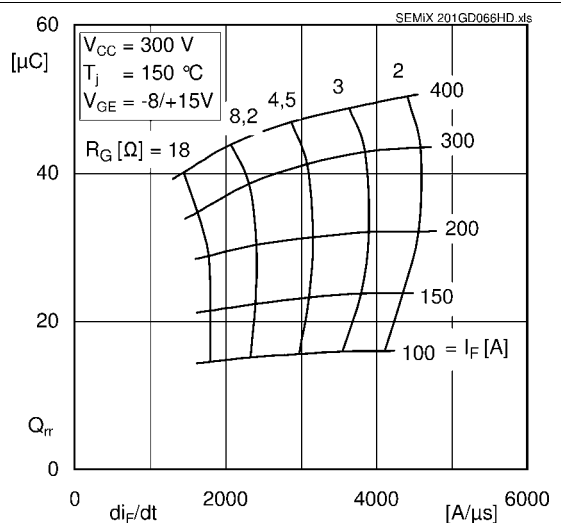
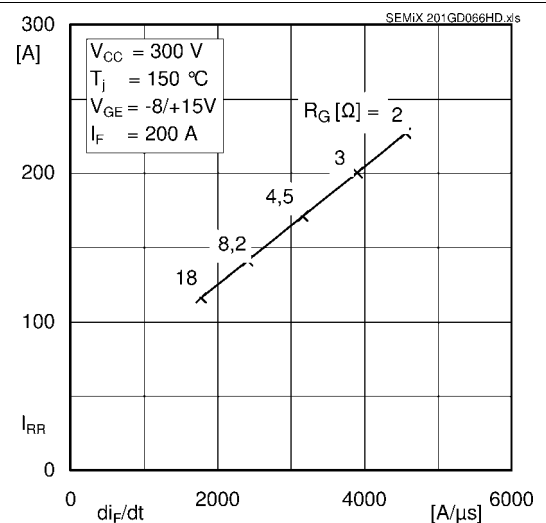
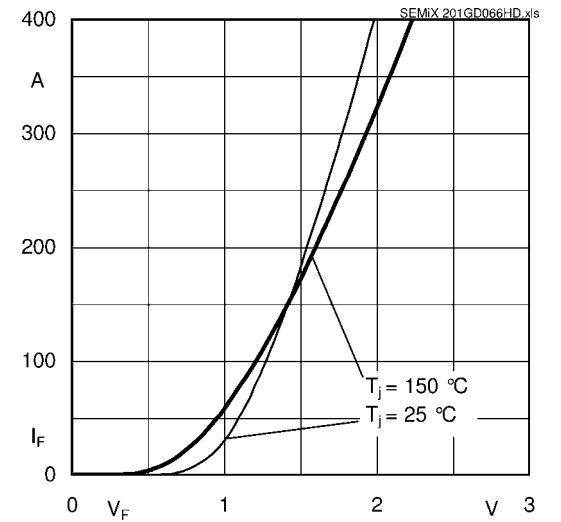
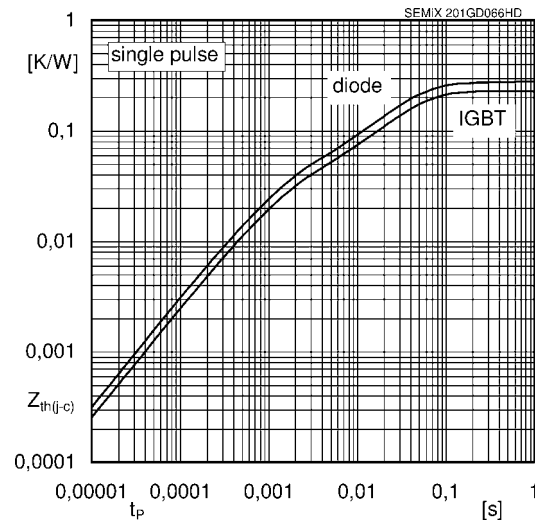
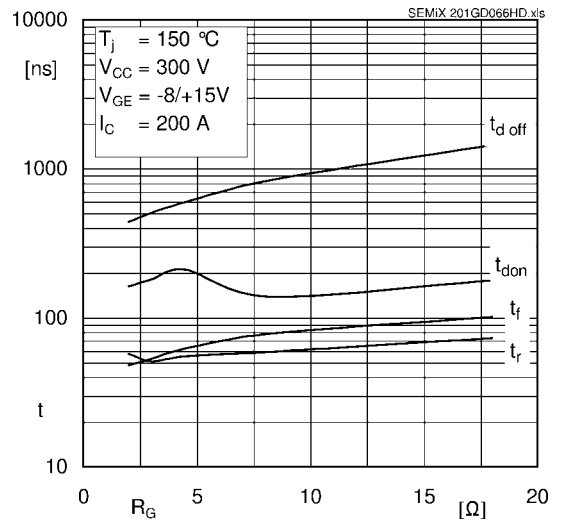
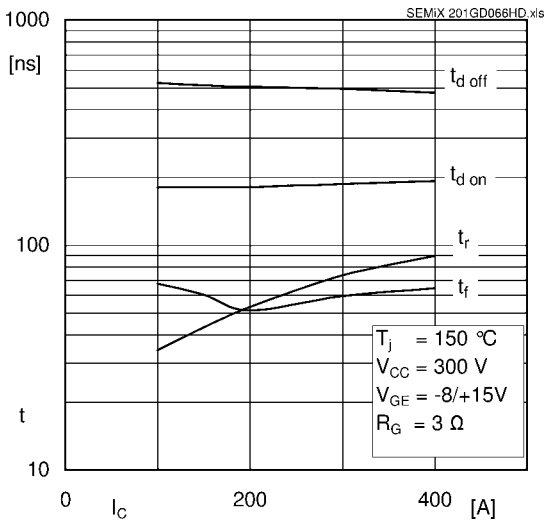
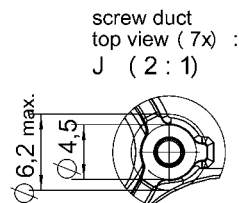
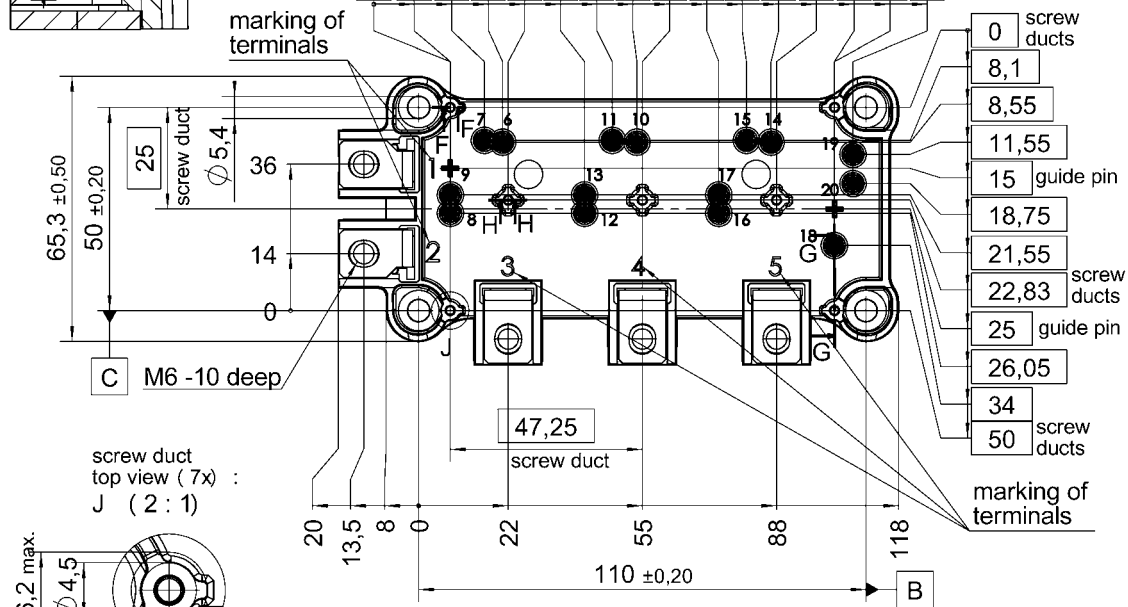
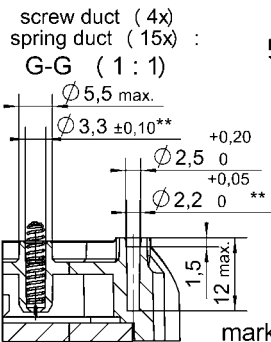
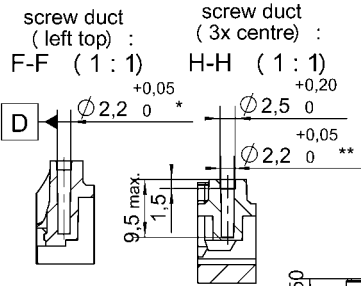


Fig. 6: Typ. gate charge characteristic



SEMiX201GD066HDs

Case: SEMiX 13



| | | |
|-------------|-----|---------------------|
| \square | 0,3 | connector 1-2 / 3-5 |
| \parallel | 0,2 | each connector A |

general tolerance:
ISO 2768-mK
ISO 8015

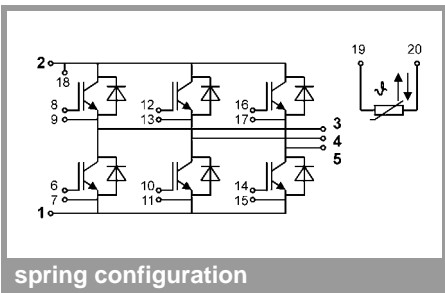
All measures in Z-direction valid when mounted to heat sink

*screw duct left / top with $\phi \phi 0,2$ A B C

**screw ducts / guide pins / spring ducts with $\phi \phi 0,2$ A D C

Rules for the contact PCB:
 - holes guidepins = $\phi 4 \pm 0,1$ / position tolerance $\pm 0,1$
 - holes for screws = $\phi 2,9 \pm 0,1$ / position tolerance $\pm 0,1$
 - spring contact pad = $\phi 3,6 \pm 0,1$ / position tolerance $\pm 0,1$

SEMiX 13



This is an electrostatic discharge sensitive device (ESDS), international standard IEC 60747-1, Chapter IX

* The specifications of our components may not be considered as an assurance of component characteristics. Components have to be tested for the respective application. Adjustments may be necessary. The use of SEMIKRON products in life support appliances and systems is subject to prior specification and written approval by SEMIKRON. We therefore strongly recommend prior consultation of our personal.