

Model No.: FR0915M00-DJ12
 915.00 MHz SAW Resonator

Rev. No.: 1

A. Feature:

1. One-port SAW Resonator

B. Maximum Ratings:

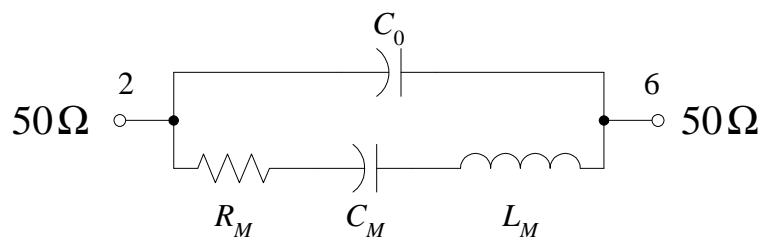
1. Input Power Level: 0dBm
2. DC Voltage: 10V
3. Storage Temperature: -40°C to +85°C
4. Operating Temperature Range: -40°C to +85°C

C. Electrical Specifications:

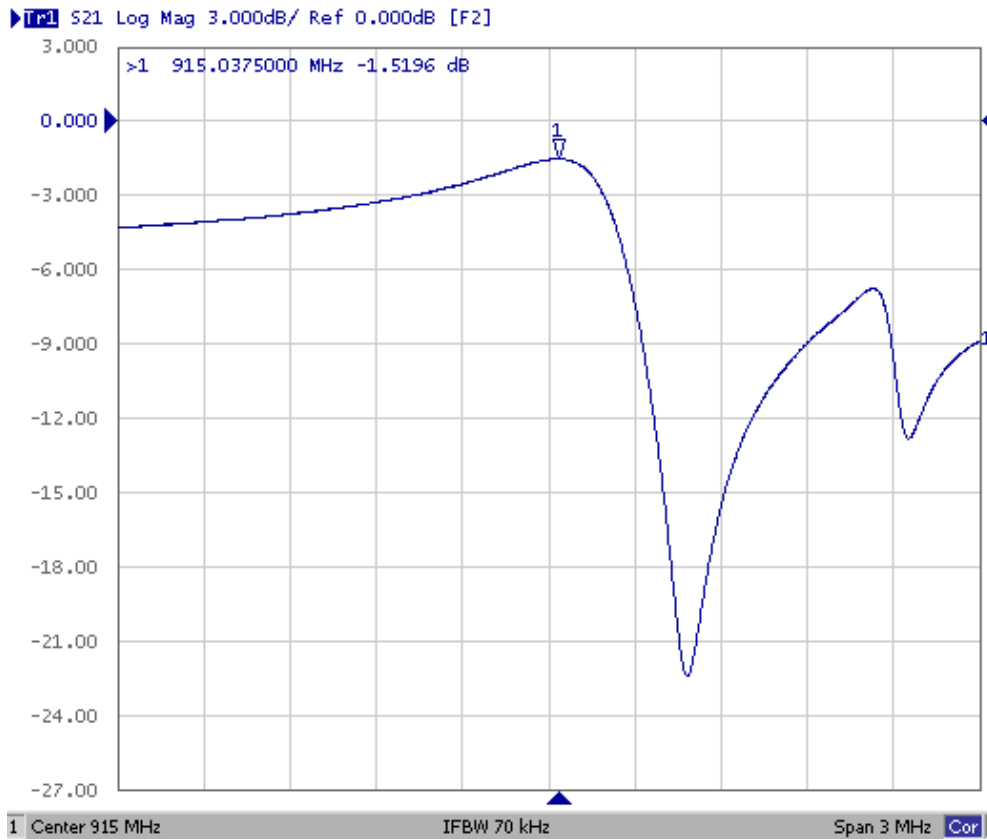
Ambient Temperature: 23°C

Item	Unit	Min.	Typ.	Max.
Center Frequency, f_r	MHz	914.85	915.00	915.15
Insertion Loss, IL	dB	-	1.5	2.5
Unloaded quality factor, Q_U		-	8000	-
Loaded quality factor, Q_L		-	1200	-
RF Equivalent RLC Model				
Motional Resistance, R_M	Ω	-	18	-
Motional Capacitance, C_M	fF	-	1.3651	-
Motional Inductance, L_M	μ H	-	22.1564	-
Shunt Static Capacitance, C_0	pF	-	1.6	-
Turnover Temperature, T_0	°C	20	40	55
Frequency Temperature Coefficient, FTC	ppm/k ²	-	0.032	-

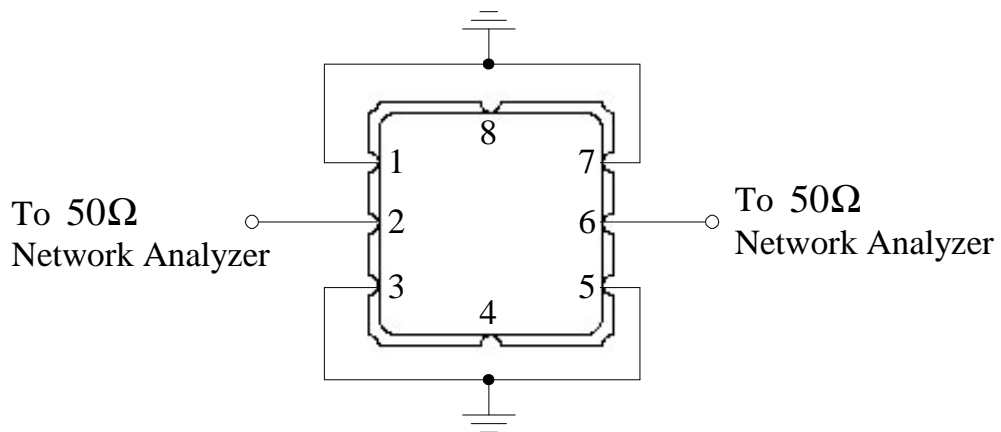
D. RF Equivalent Model:



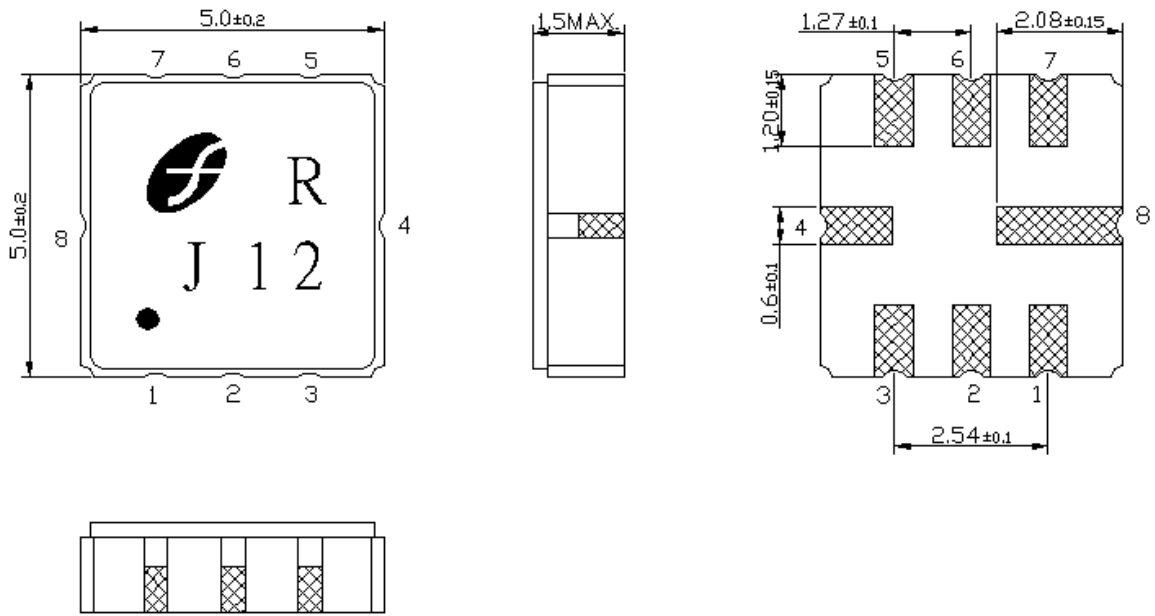
E. Characteristics:



F. Test Circuit:



G. Package and pin configuration:



(Unit: mm)

- | | |
|-----------------------|-----------------------|
| Pin 1: Ground | Pin 5: Ground |
| Pin 2: Input | Pin 6: Output |
| Pin 3: Ground | Pin 7: Ground |
| Pin 4: Package Ground | Pin 8: Package Ground |