

Materials and Finish

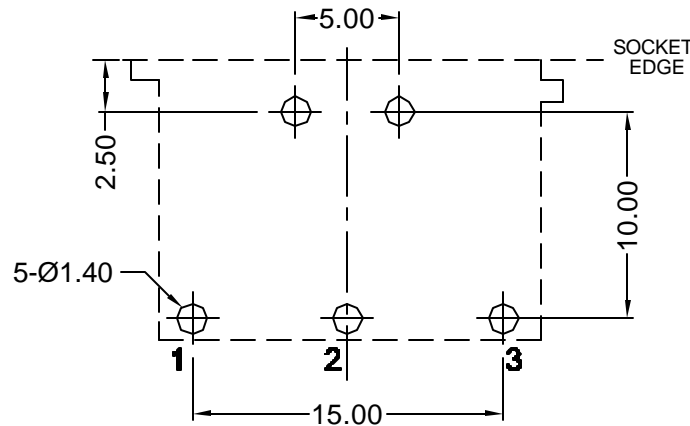
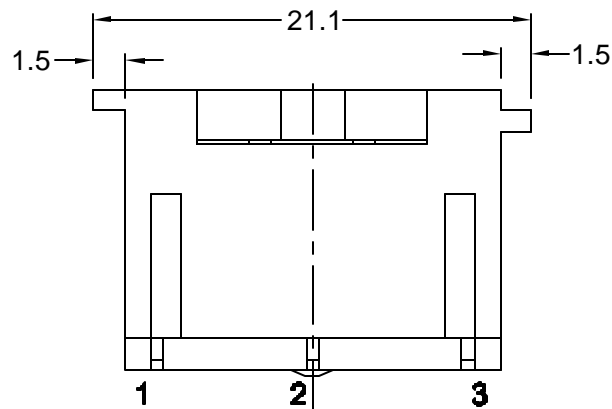
Material-PBT Thermoplastic
 UL94V-0 Rated
 Color: black
 Contact-Brass, Tin Plated

Mechanical Characteristics

Insertion Force
 0.5kg - 4.5kg
 Withdrawal Force
 0.5kg - 4.5kg
 Durability
 5000 cycles

Electrical Characteristics

Rated Current: 2.0 Amp DC
 Rated Voltage: 24V DC
 Insulation Resistance
 100 Megohms min. at 500V DC
 Contact Resistance
 Before Test: 50 Milliohms max.
 After Test: 100 Milliohms max.
 Dielectric Withstanding Voltage
 500V AC for 1 minute
 Operating Temperature
 -25°C to 85°C



Recommended PCB Layout
 (bottom view)

RoHS COMPLIANT
 EU Directive 2002/95/EC



Tolerances
X.X ± 0.25
X.XX ± 0.15
Unless Stated Otherwise

REV.	DATE	DESCRIPTION	REV. BY	CHK. BY	DRAWN BY	DATE
A1	8/1/05	New Drawing	N.Chang	H. MA	N.Chang	5/03/05

KCDX-3S-N2

Circular DIN, 3 pos, RoHS Compliant
Non-shielded, 5mm spacing

