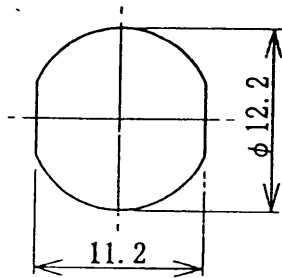
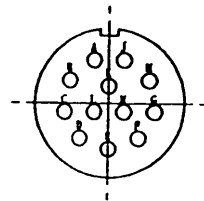


MOUNTING HOLE DIMENSIONS



NUMBER OF CONTACT
(VIEW ON TERMINATION SIDE OF INSULATOR)



NOTES

1. CHARACTERISTICS

DIELECTRIC WITHSTANDING VOLTAGE : 300V rms AT SEA LEVEL.
INSULATION RESISTANCE : 1000MΩ MIN AT 100V D.C.
CONTACT RESISTANCE : 10mΩ MAX D.C. 1A MAX

2. RATING

VOLTAGE RATING : 100V rms MAX AT SEA LEVEL
CURRENT RATING : 2A MAX

3. SOLDER BUCKET SIZE : 0.5 DIA

4. MARKING : PRC07 T.M.W PAT

品番 ITEM	部品名 DESCRIPTION	材質 MATERIAL	処理 TREATMENT	数量 QTY	備考 REMARKS
7	STEEL BALL	STEEL	CHROMIUM PLATED	3	
6	SHELL	BRASS	NICKEL PLATED	1	
5	FRONT INSULATOR	PBT RESIN	—	1	
4	WASHER	BRASS	NICKEL PLATED	1	
3	HEX NUT	BRASS	NICKEL PLATED	1	
2	REAR INSULATOR	PBT RESIN	—	1	
1	PIN CONTACT	PHOSPHOR BRONZE	GOLD FLASH OVER NICKEL PLATED	1 2	

記号 SYM	変更 REVISION	第三角法 PROJECTION	尺度 SCALE 2 / 1	T.M.W TAJIMI ELECTRONICS CO.,LTD.		
		単位 UNITS mm	製図 DRAWN S. SATO			
		交差 TOLERANCES ON ANGLE . X . XX	設計 ENGR T. Waka	DATE 11 JAN 1999	PRC07-R12M	
		仕様書番号 SPEC No	検図 CHK T. Waka	DATE 11 JAN 1999		
			承認 APPD K. Yagi	DATE 12 JAN 1999	PRC07-1012	変更REV 1