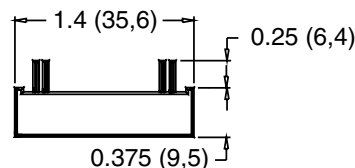
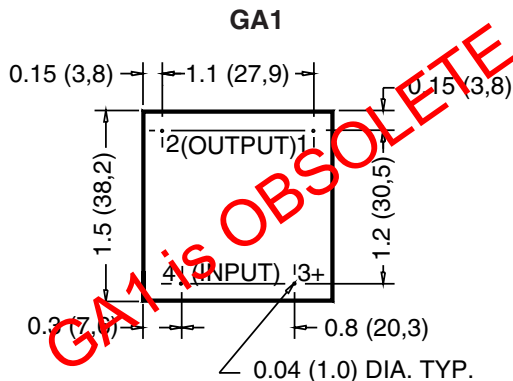


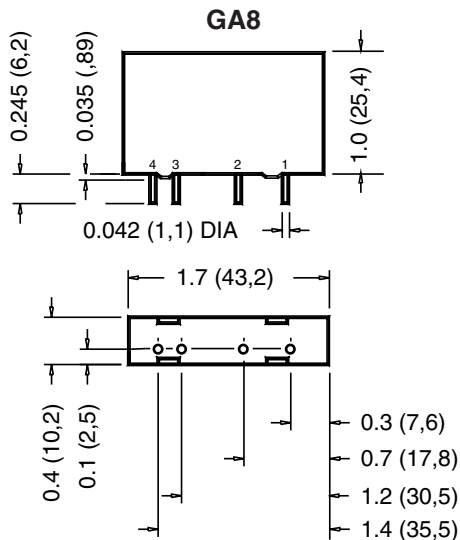
SOLID STATE RELAYS

GA1, GA8, SERIES

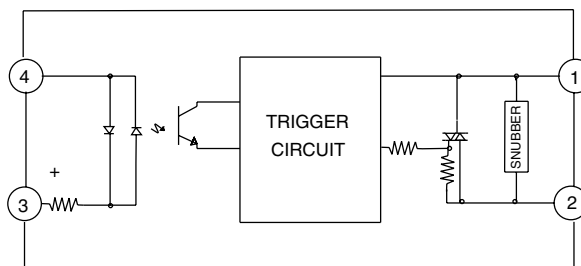
- High Current Thyristor for 100A Surge Capability
- UL Recognized/Horse Power Rated (GA8) (E46203)
- 4KV Optical Isolation
- Zero Voltage Turn-On
- Industry Standard Packaging. (GA1 Series is Obsolete)
- Form A Output
- CE Compliant



DIMENSIONS: inches (mm)
TOLERANCE: ±0.020 (±0,50)



DIMENSIONS: inches (mm)
TOLERANCE: ±0.020 (±0,50)



GA1 & GA8 SERIES DC INPUT
 EQUIVALENT CIRCUIT

Products and specifications subject to change without notice.
 Consult factory for application assistance.

SOLID STATE RELAYS

GA1, GA8, SERIES

1

INPUT SPECIFICATIONS: (1)

Parameter	GA16B02	GA86D05	Units
	GA86B02	GA86D05R	
Minimum Turn-On Voltage	3.0	3.0	VDC
Maximum Input Voltage	28	28	VDC
Drop Out Voltage	1.0	1.0	VDC
Maximum Input Current (2)	16	16	mADC
Nominal Input Resistance (3)	Current Regulated		

OUTPUT SPECIFICATIONS:

Model Number	GA16B02 (10)	GA86D05	Units
	GA86B02	GA86D05R	
Parameter			
Nominal Line Voltage	240	240	Vrms
Minimum Line Voltage	24	24	Vrms
Maximum Line Voltage	280	280	Vrms
Maximum Peak Off-State Voltage(4)	±600	±600	Vpeak
Static (Off-State) dv/dt	200	200	V/μS

Parameter	GA16B02	GA86D05	Units
	GA86B02	GA86D05R	
Maximum On-State Current (5)	3.5	5.0	Arms
Minimum On-State Current	.05	.05	Arms
Maximum 1-Cycle Surge (6)	100	100	Apeak
On-State Voltage Drop (7)	1.6	1.6	Vpeak
Maximum Off-State Leakage (8)			
240V Models	.1	.1	mArms
HP Rating (11)	1/4	1/4	H.P.

GENERAL SPECIFICATION: (1)

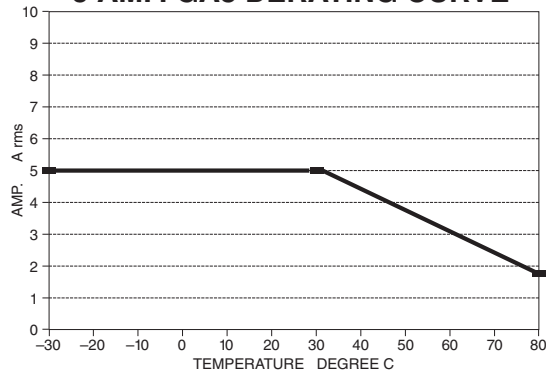
Parameter	All Devices	Units
Operating Temperature Range	-30 to +80	°C
Storage Temperature Range	-40 to +100	°C
Response Time (12)	.5	Cycle
Input to Output Isolation Voltage (9)	4000	Vrms
Capacitance Input to Output (Typ)	8	pF
Line Frequency Range	47 to 63	Hz

Note: GA1 Series is Obsolete
GA8-2B and GA8-4B have been replaced by GA8-6B

Notes:

- (1) Specifications apply to Ta -30 TO +80 unless otherwise noted.
- (2) At maximum input voltage.
- (3) Does not include IRED impedance (drop).
- (4) One minute maximum duration when applied as a DC Voltage.
- (5) Derate 50 mA/°C from 40°C to 80°C
UL rating is 3.5 Arms, CSA rating is 3.0 Arms.
- (6) At Ta of 25°C, non-repetitive.
- (7) At Ta of 25°C and maximum on-state current.
- (8) At Ta of 25°C and maximum line voltage.
- (9) At Ta of 25°C, for one second.
- (10) Random turn-on versions available. Specify by adding suffix "R" to appropriate part number. Contact factory for additional details.
- (11) For GA8 only, 1/4 H.P. at 240 VAC, 1/8 HP at 120 VAC
- (12) AT 60 Hz 100 μS for Random Turn-on
(suffix "R") models

5 AMP. GA8 DERATING CURVE



Products and specifications subject to change without notice.
Consult factory for application assistance.