

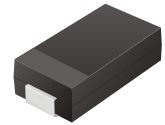
# SMD Schottky Barrier Rectifiers



SMD Diodes Specialist

## CDBA5817-G Thru CDBA5819-G

Reverse Voltage: 20 - 40 Volts  
 Forward Current: 1A or 3 A  
 RoHS Device

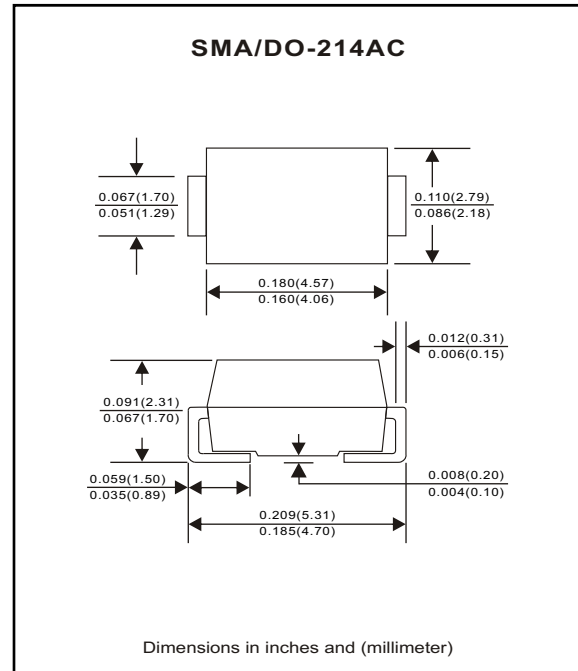


### Features

- Ideal for surface mount applications.
- Easy pick and place.
- Plastic package has Underwriters Lab, flammability classification 94V-0.
- Built-in strain relief.
- Low forward voltage drop.

### Mechanical data

- Case: JEDEC DO-214AC, molded plastic.
- Terminals: Solderable per MIL-STD-750, method 2026.
- Polarity: Color band denotes cathode end.
- Weight: 0.064 gram (approx.).



### Maximum Ratings (at TA=25°C unless otherwise noted)

Parameter	Symbol	CDBA5817-G	CDBA5818-G	CDBA5819-G	Unit
Max. Repetitive Peak Reverse Voltage	V <sub>RRM</sub>	20	30	40	V
Max. DC Blocking Voltage	V <sub>DC</sub>	20	30	40	V
Max. RMS Voltage	V <sub>RMS</sub>	14	21	28	V
Peak Surge Forward Current 8.3ms single half sine-wave superimposed on rated load (JEDEC method)	I <sub>FSM</sub>	25			A
Max. Average Forward Current	I <sub>O</sub>	1			A
Max. Thermal Resistance	R <sub>θJL</sub>	20			°C/W
Storage Temperature	T <sub>STG</sub>	+125			°C
Max. Operating Junction Temperature	T <sub>J</sub>	-65 to +150			°C

### Electrical Characteristics (at TA=25°C unless otherwise noted)

Parameter	Symbol	CDBA5817-G	CDBA5818-G	CDBA5819-G	Unit
Max. Forward Voltage at 1.0 A at 3.0 A	V <sub>F</sub>	0.45 0.75	0.550 0.775	0.60 0.90	V
Max. DC Reverse Current at Rated DC Blocking Voltage Ta = 25°C Ta = 100°C	I <sub>R</sub>	0.5 20			mA
Typical Junction Capacitance	C <sub>j</sub>	65			pF

## RATING AND CHARACTERISTIC CURVES (CDBA5817-G Thru CDBA5819-G)

Fig. 1 - Forward characteristics

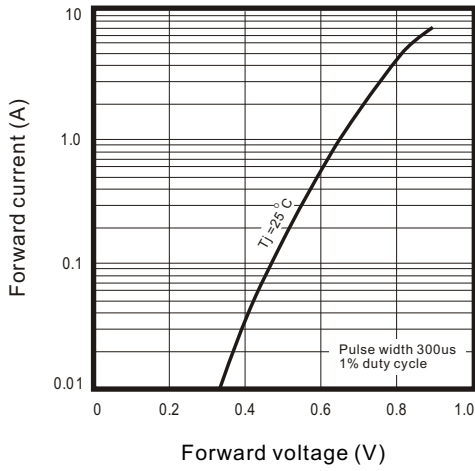


Fig. 2 - Reverse characteristics

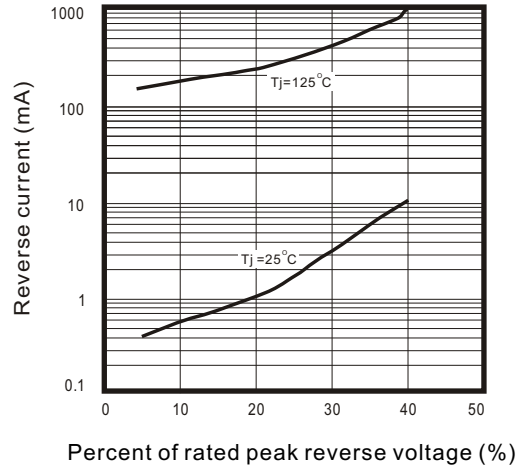


Fig.3 - Capacitance between terminals characteristics

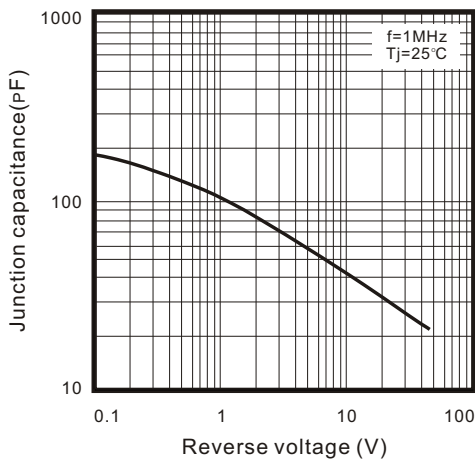


Fig.4 - Current derating curve

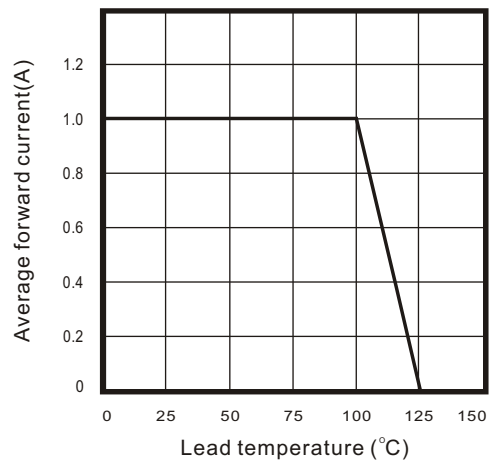


Fig.5 - Non repetitive peak forward surge current

