

Telpower® DC Power Distribution Fuses

TPL

170 Volts, DC, 70-800 Amps



Catalog Symbol: TPL
 DC Power Distribution Fuses
 Current-Limiting
Ampere Rating: 70 to 800 Amperes
Voltage Rating: 170 Volts DC
Interrupting Rating: 100,000A
 Silver-plated terminals
Agency Approvals:
 UL Recognized, Guide JFHR2, File E56412
 Bellcore

Catalog Numbers

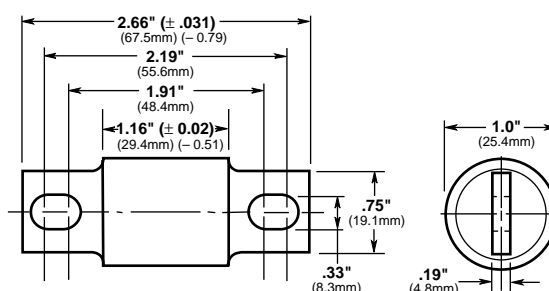
TPL-BA	TPL-BD	TPL-BG	TPL-BL	TPL-CR	TPL-CZ
TPL-BB	TPL-BE	TPL-BH	TPL-CN	TPL-CU	TPL-CZH
TPL-BC	TPL-BF	TPL-BK	TPL-CO	TPL-CV	—

Carton Quantity and Weight

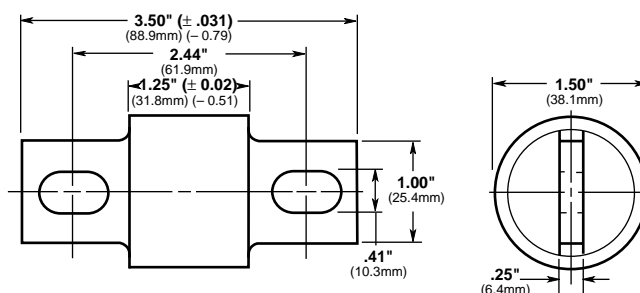
Catalog Number	Ampere Rating	Carton Qty.	Weight*	
			Lbs.	Kg.
TPL-BA	70	5	1.6	0.73
TPL-BB	80	5	1.6	0.73
TPL-BC	90	5	1.6	0.73
TPL-BD	100	5	1.6	0.73
TPL-BE	125	5	1.6	0.73
TPL-BF	150	5	1.6	0.73
TPL-BG	175	5	1.6	0.73
TPL-BH	200	5	1.6	0.73
TPL-BK	225	5	1.6	0.73
TPL-BL	250	5	1.6	0.73
TPL-CN	300	1	0.9	0.4
TPL-CO	350	1	0.9	0.4
TPL-CR	400	1	0.9	0.4
TPL-CU	450	1	0.9	0.4
TPL-CV	500	1	0.9	0.4
TPL-CZ	600	1	0.9	0.4
TPL-CZH	800	1	0.9	0.4

*Weight per carton.

Dimensional Data



TPL-BA, TPL-BB, TPL-BC, TPL-BD, TPL-BE,
 TPL-BF, TPL-BG, TPL-BH, TPL-BK, AND TPL-BL



TPL-CN, TPL-CO, TPL-CR, TPL-CU,
 TPL-CV, TPL-CZ, and TPL-CZH

General Information:

- Designed for DC power distribution systems.
- Recognized branch circuit protection.
- Current-limiting capability.
- Complete system coordination capability.
- Energy savings with low watts loss, low operating temperatures, and minimum I²t levels.
- Use with Telpower **15100** and **15200** disconnect systems.
- For replacement of Bussmann's UBO fuses, a **TPL-TA** adapter kit is necessary.
- Spare fuseholders:
 TPSFH-LB (for TPL-B fuses)
 TPSFH-LC (for TPL-C fuses)

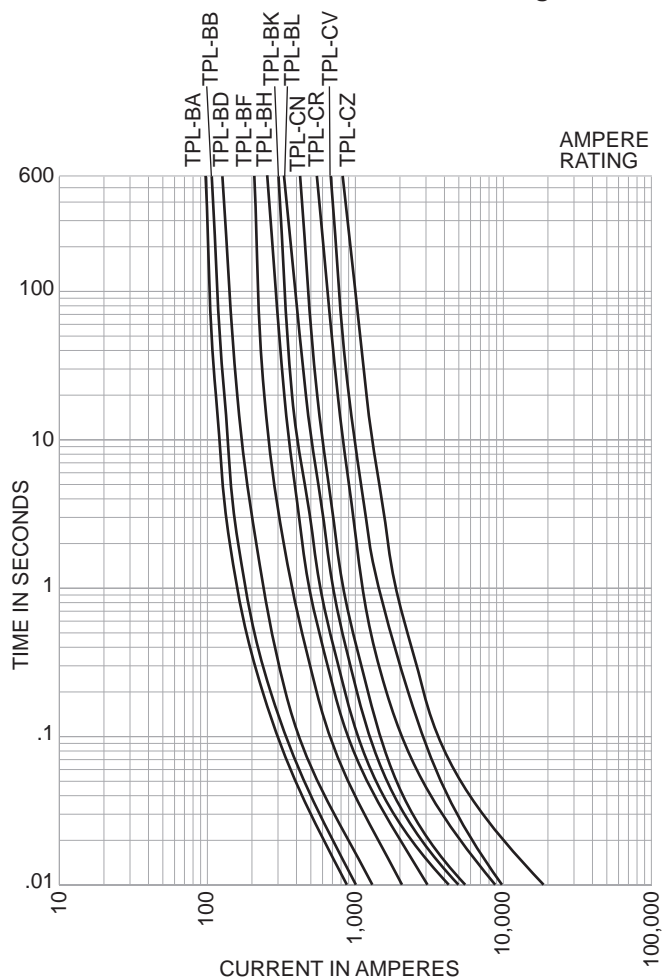
CE CE logo denotes compliance with European Union Low Voltage Directive (50-1000 VAC, 75-1500 VDC). Refer to BIF document #8002 or contact Bussmann Application Engineering at 636-527-1270 for more information.

Telpower® DC Power Distribution Fuses

170 Volts DC, 70-800 Amps

TPL

Time-Current Characteristic Curves—Average Melt



The only controlled copy of this BIF document is the electronic read-only version located on the Bussmann Network Drive. All other copies of this document are by definition uncontrolled. This bulletin is intended to clearly present comprehensive product data and provide technical information that will help the end user with design applications. Bussmann reserves the right, without notice, to change design or construction of any products and to discontinue or limit distribution of any products. Bussmann also reserves the right to change or update, without notice, any technical information contained in this bulletin. Once a product has been selected, it should be tested by the user in all possible applications.