

DC-AC INVERTER UNIT

CXA-P1012-NJL (9.0W DUAL OUTPUTS)

(PRELIMINARY INFORMATION)

DESCRIPTION:

This DC to AC Inverter was developed for large size LCD panel as Multiple Media, Replacement of CRT Monitor and other general Purpose.

APPLICABLE LCD:

- 9 to 15 inches Double lamp type
- Lamp Voltage 600V
- Lamp Current 5mA

FEATURES :

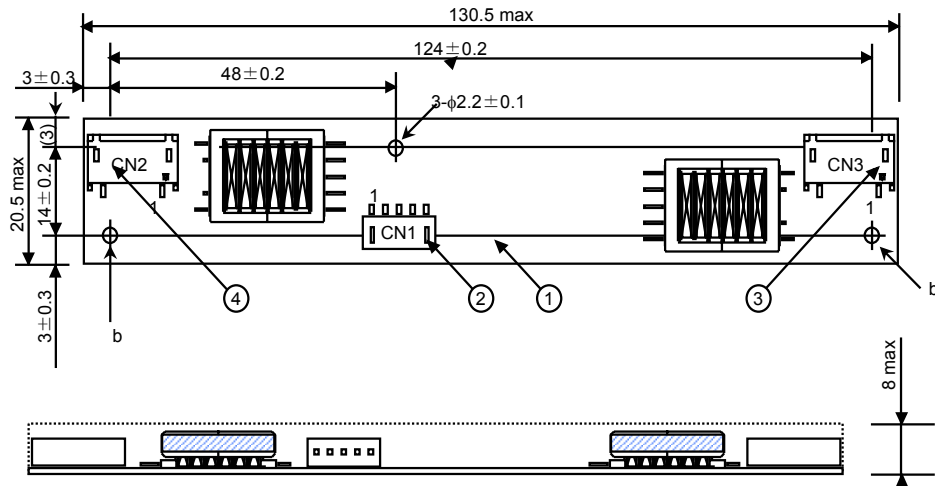
- High Efficiency (85%)
- Fuse protection
- Low noise with voltage resonant circuit
- 8mm Low Profile



TEMPERATURE & HUMDITY :

- Operating Temperature Range -10 ° C ~ +60° C
- Storage Temperature Range -30 ° C ~ +85° C
- Humidity 95 %RH max

DIMENSIONS :



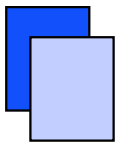
Unit: mm
Weight: 21.0g typ.

No.	Part Discription	Qty.	Material	Note
1	PCB	1	UL94V-0 (FR-4 or CEM-3)	t=1.0mm
2	Connector CN1	1	S5B-PH-SM3	JST
3	Connector CN2	1	SM02(8.0)B-BHS-1	JST
4	Connector CN3	1	SM02(8.0)B-BHS-1	JST

Power Systems – The Power Solution

Web: www.Power-Systems.de
Email: Info@Power-Systems.de

Address: Dörnet 8 ; 74360 Ilsfeld-Auenstein / Germany
Tel. : + 49 / 70 62 / 67 59 - 6
Fax: + 49 / 70 62 / 67 59 - 80



DC-AC INVERTER UNIT

CXA-P1012-NJL (9.0W DUAL OUTPUTS)

(PRELIMINARY INFORMATION)

Input Side CN1:

Pin No.	Symbols	Ratings
CN 1-1	V _{in}	12V
CN 1-2	GND	0V
CN 1-3	N.C.	-
CN 1-4		
CN 1-5		

Output Side CN2, CN3:

Pin No.		Symbols	Ratings
CN 2-1	CN 3-1	V _{HIGH} 1, 2	600 V _{rms}
CN 2-2	CN 3-2	N.C.	-
CN 2-3	CN 3-3	V _{LOW} 1, 2	(2V)

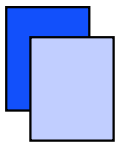
ELECTRICAL CHARACTERISTICS:

Items	Symbols	Conditions			Specification			Unit	
		V _{in} (V)	T _a (°C)	R _L 1, 2 (KΩ)	Min.	Typ.	Max.		
Output Current	l _{out1}	12±0.12	18~28	120	4.5	5.0	5.5	mA _{rms}	
	l _{out2}				4.0	5.0	6.0		
	l _{out1}	12±0.6	-10~60	110~130	-	620	900		mA DC
	l _{out2}				30	37	44		
Input Current	I _{in}	12±0.6	-10~60	110~130	∞	1400	1500	-	V _{rms}
Frequency	F								
Open Circuit Voltage	V _{open} 1, 2								

Power Systems – The Power Solution

Web: www.Power-Systems.de
 Email: Info@Power-Systems.de

Address: Dörnet 8 ; 74360 Ilsfeld-Auenstein / Germany
 Tel. : + 49 / 70 62 / 67 59 - 6
 Fax: + 49 / 70 62 / 67 59 - 80



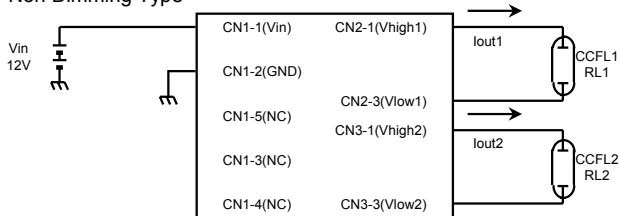
DC-AC INVERTER UNIT

CXA-P1012-NJL (9.0W DUAL OUTPUTS)

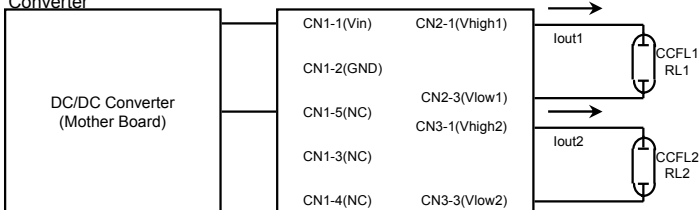
(PRELIMINARY INFORMATION)

APPLICATION (For Example):

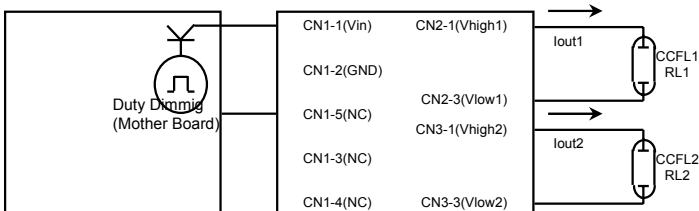
Non Dimming Type



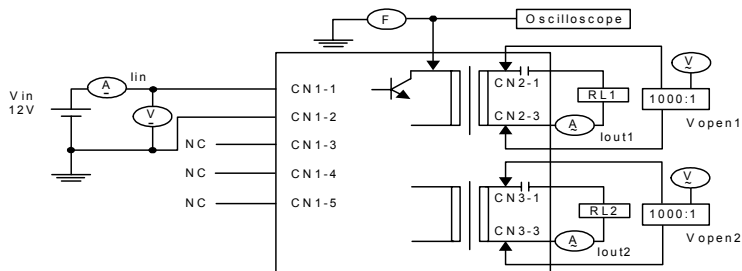
Dimming by DC/DC Converter



Dimming by PWM



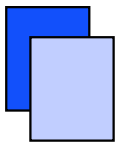
TEST CIRCUIT:



Power Systems – The Power Solution

Web: www.Power-Systems.de
 Email: Info@Power-Systems.de

Address: Dörnet 8 ; 74360 Ilsfeld-Auenstein / Germany
 Tel. : + 49 / 70 62 / 67 59 - 6
 Fax: + 49 / 70 62 / 67 59 - 80



- Note 1. For circuit connection, please refer to test circuit diagram.
- Note 2. Please use minimum of 2mm clearance (all directions) between inverter high voltage area and any conductors. Please refer to mechanical drawing for marking of high voltage area.
- Note 3. Open voltage (strike voltage) is measured across the transformer secondary winding at no load as the reading at the output connector would be less than the actual value.
- Note 4. The output of this dc-ac inverter is insulated in electricity with the input part. Please use CN2-3 and CN3-3 side when you connect the Vlow side of the output with the ground.
- Note 5. Please use the screw of the insulator to prevent the electrical discharge or make the installation. Screw the first side and an insulated structure in electricity because the output pattern of a high voltage is laid out to be near when you use the installation hold of part b in the externals dimensional drawing.
- Note 6. If the start up voltage falls below Cold Cathode Tube strike voltage, the CCFL will not light up easily specially at lower ambient temperature. Please review mounting instruction to avoid any abnormal operation due to coupling/leakage capacitance of inverter high voltage area to any surrounding conductor.