



TAI-SAW TECHNOLOGY CO., LTD.

No. 3, Industrial 2nd Rd., Ping-Chen Industrial District,
Taoyuan, 324, Taiwan, R.O.C.

TEL: 886-3-4690038 FAX: 886-3-4697532

E-mail: tstsales@mail.taisaw.com Web: www.taisaw.com

Approval Sheet For Product Specification

Issued Date: Feb, 12, 2009

Product Name: SAW Filter 1120 MHz SMD 3.0X3.0 mm

TST Parts No.: TA0974A

Customer Parts No.: _____

Company: _____
Division: _____
Approved by : _____
Date: _____

Checked by: _____ Bob Chau *Bob Chau*

Approval by: _____ Francis Chen *Francis Chen*

Date: _____ 2, 12, 2009



TAI-SAW TECHNOLOGY CO., LTD.

No. 3, Industrial 2nd Rd., Ping-Chen Industrial District,
Taoyuan, 324, Taiwan, R.O.C.

TEL: 886-3-4690038 FAX: 886-3-4697532

E-mail: tstsales@mail.taisaw.com Web: www.taisaw.com

SAW Filter 1120 MHz

MODEL NO.:TA0974A

REV. NO.:1

A. MAXIMUM RATING:

1. Input Power Level: 10 dBm
2. DC Voltage : 3V
3. Operating Temperature: -40°C to +85°C
4. Storage Temperature: -40°C to +85°C

RoHS Compliant
Lead free
Lead-free soldering

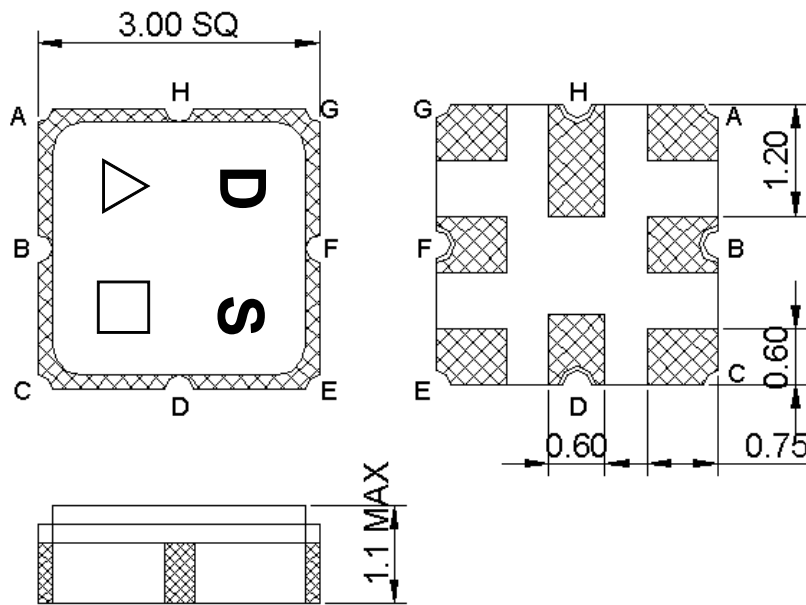
B. ELECTRICAL CHARACTERISTICS:

Terminating source impedance (balanced) : $Z_s = 200 \Omega$

Terminating load impedance (balanced) : $Z_L = 200 \Omega$

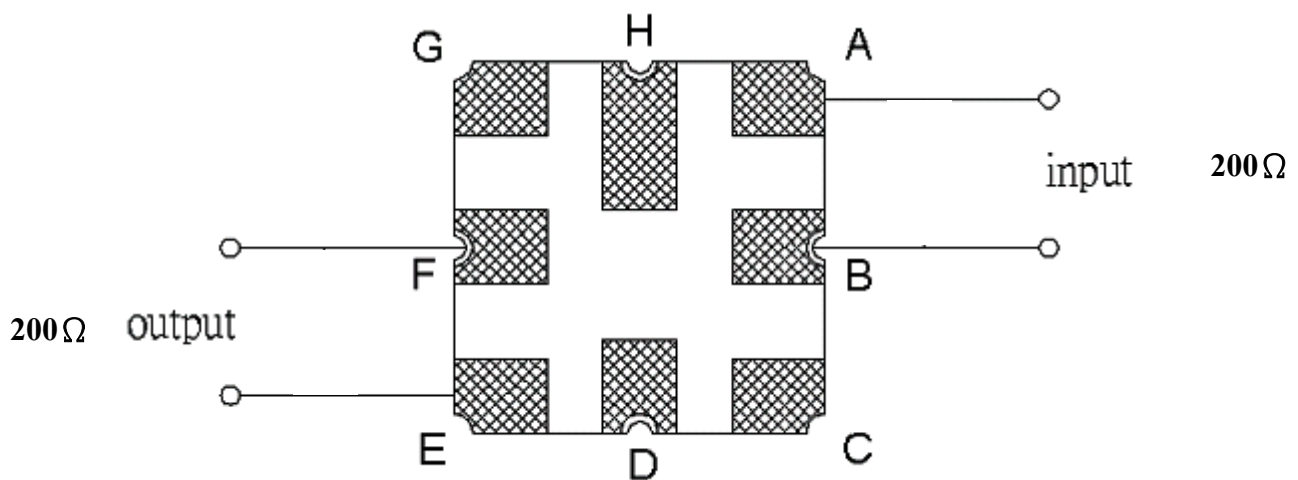
Item	Unit	Min.	Typ.	Max.	Note
Center Frequency Fc	MHz	-	1120	-	-
Insertion Loss (Fc±4 MHz) IL	dB	-	2.8	5	-
Amplitude ripple (Fc±4 MHz)	dB	-	0.5	1.5	-
Bandwidth BW-3dB	MHz	19	21	-	-
Attenuation (Reference level from 0dB)					
500 ~ Fc-85 MHz	dB	50	62	-	-
Fc-76 ~ Fc-68 MHz	dB	50	61	-	-
Fc-44 MHz	dB	50	59	-	-
Fc-36 MHz	dB	48	54	-	-
Fc+70 ~ 2000 MHz	dB	50	57	-	-

C.OUTLINE DRAWING:

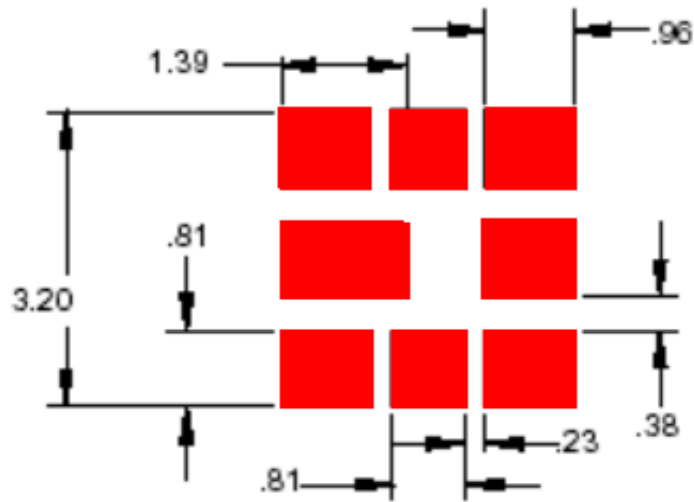


- A, B : Balanced Input
- E, F : Balanced Output
- C,D,G,H : Ground
- △ : Year code (2005->5, 2006->6, ...)
- : Date Code (W01->A,W02->B,...W27->a,...,W52->z)
- Unit : mm

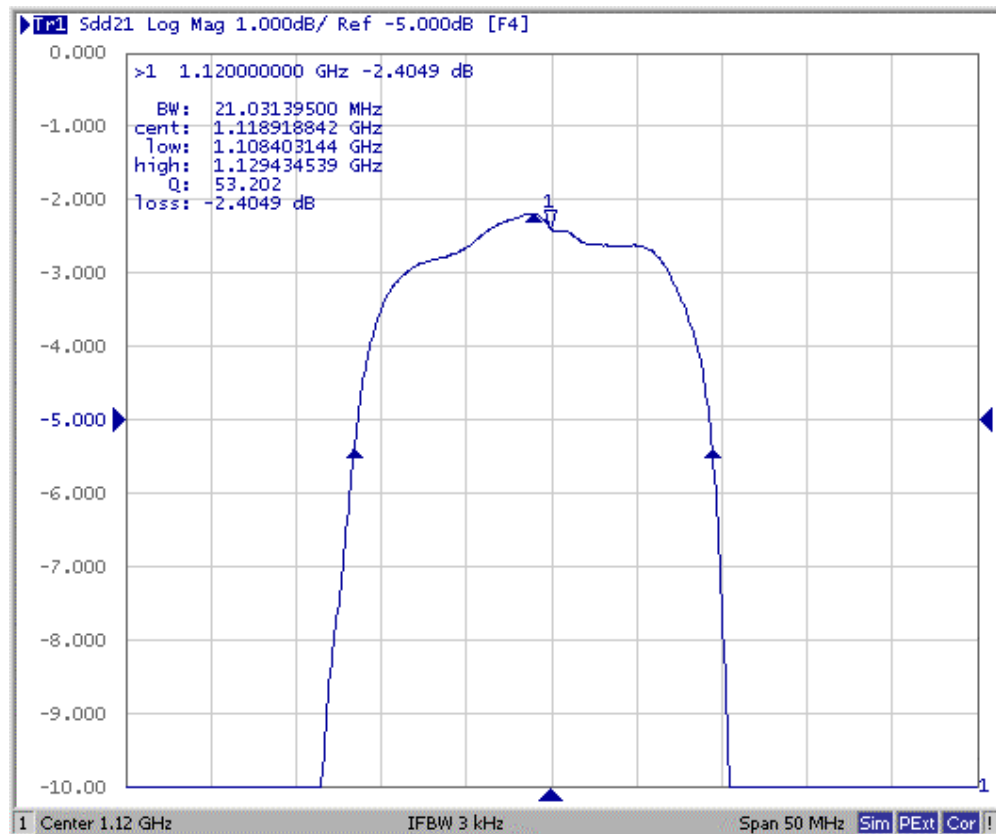
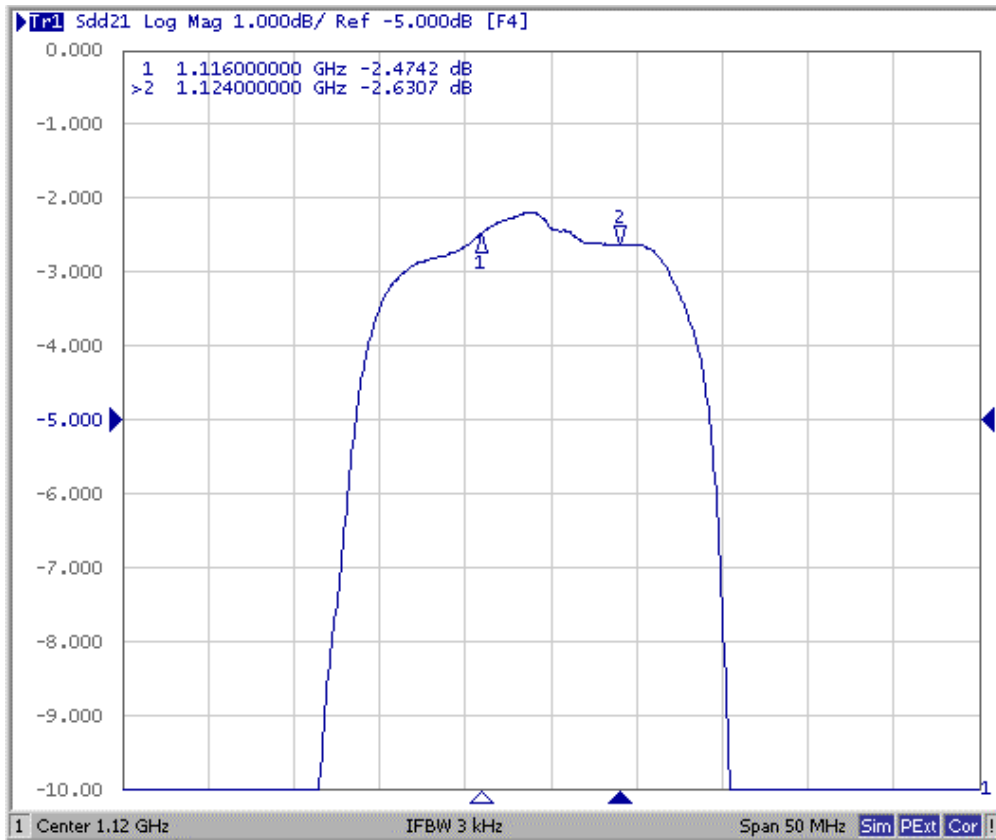
D. MEASUREMENT CIRCUIT:

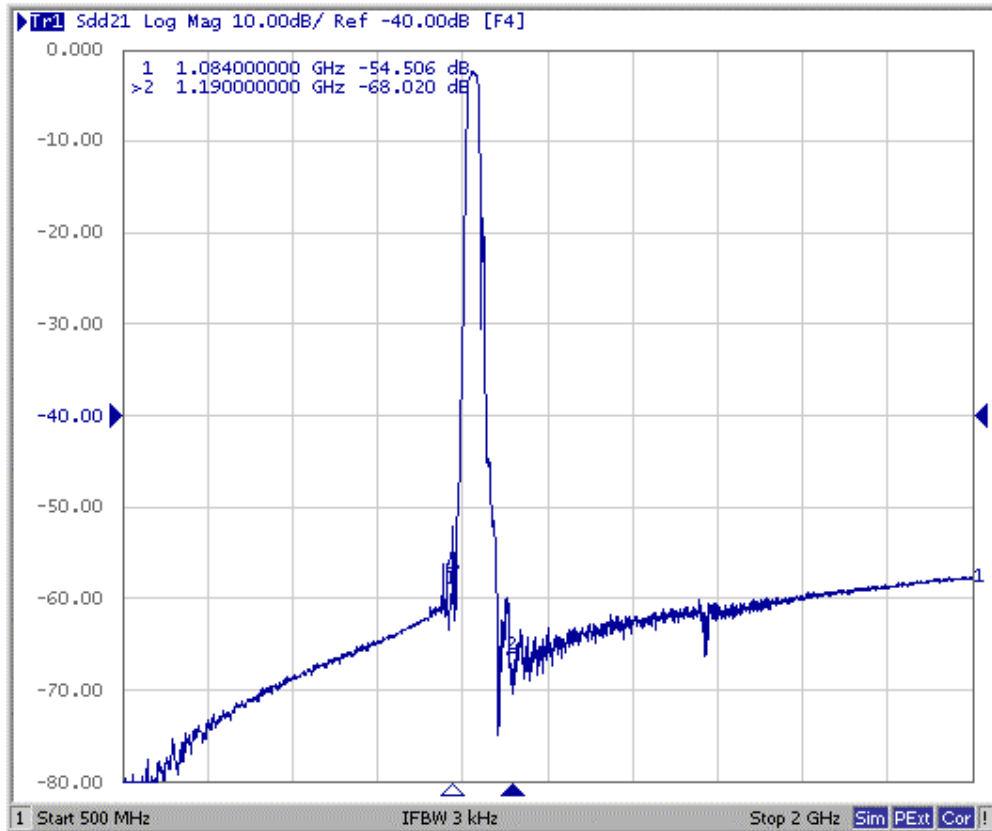


E. PCB Footprint:



F. Frequency Characteristics :

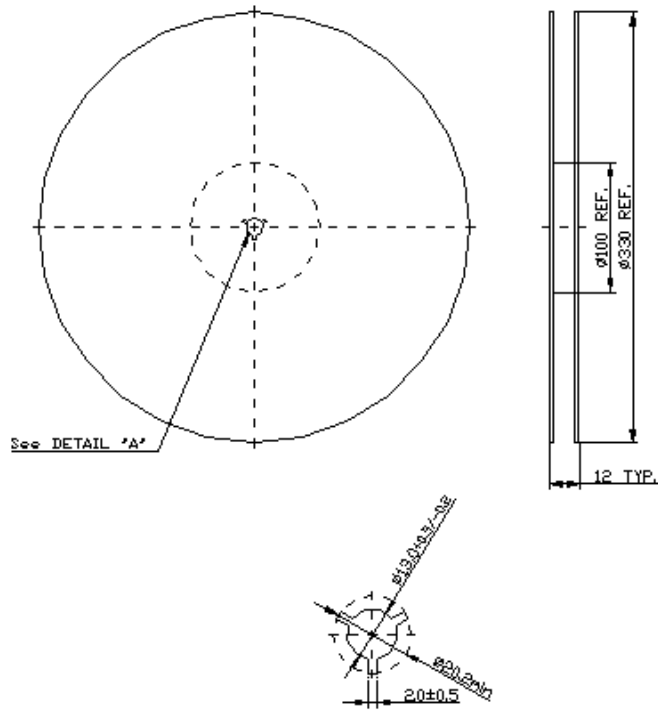




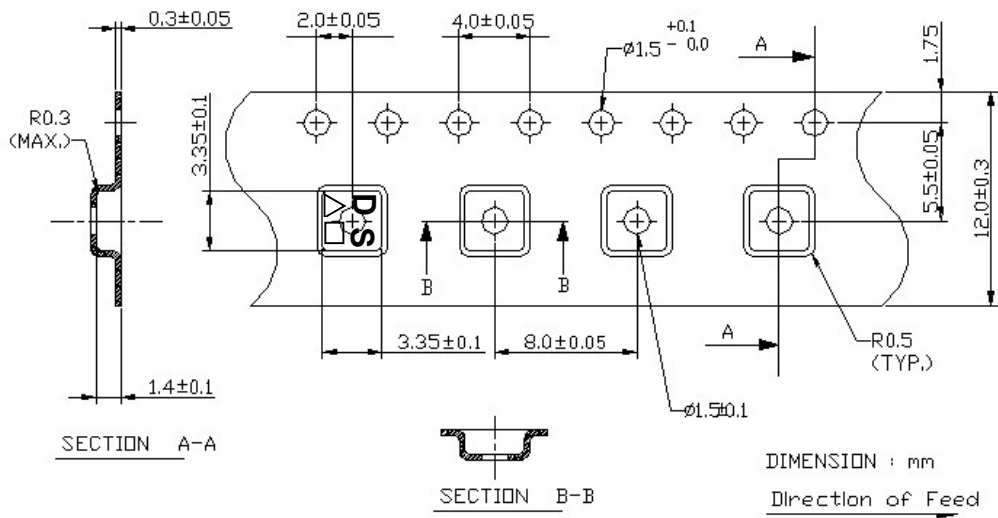
G. PACKING:

1. REEL DIMENSION

(Reel Count : 7"=1000 ; 13"=3000)



2. TAPE DIMENSION



H. RECOMMENDED REFLOW PROFILE :

