

**PLEASE CHECK WWW.MOLEX.COM FOR LATEST PART INFORMATION**

**Part Number:** [0545596411](#)  
**Status:** **Active**  
**Description:** 2.54mm (0.100") Pitch QF-50™ Flat Cable Receptacle Housing, 64 Circuits

**Documents:**

[3D Model](#) [Product Specification PS-54559-004 \(PDF\)](#)  
[Drawing \(PDF\)](#) [RoHS Certificate of Compliance \(PDF\)](#)

**General**

Product Family Ribbon Cable / Wire Trap Connectors  
 Series [54559](#)  
 Component Type Housing  
 Glow-Wire Compliant No  
 Product Name QF-50™

**Physical**

Circuits (Loaded) 64  
 Color - Resin Black  
 Durability (mating cycles max) 500  
 Entry Angle 90° Angle  
 Lock to Mating Part Yes  
 Material - Metal Phosphor Bronze  
 Material - Plating Mating Gold  
 Material - Plating Termination Gold  
 Material - Resin Polyester  
 Number of Rows 2  
 PCB Retention None  
 Packaging Type Tray  
 Pitch - Mating Interface (in) 0.100 In  
 Pitch - Mating Interface (mm) 2.54 mm  
 Plating min: Mating (µin) 12  
 Plating min: Mating (µm) 0.3  
 Plating min: Termination (µin) 12  
 Plating min: Termination (µm) 0.3  
 Polarized to Mating Part Yes  
 Stackable No  
 Surface Mount Compatible (SMC) N/A  
 Temperature Range - Operating -40°C to +85°C  
 Termination Interface: Style IDT or Pierce  
 Wire Insulation Diameter 1.14mm (.045") max.  
 Wire Size AWG 28  
 Wire/Cable Type Ribbon Cable

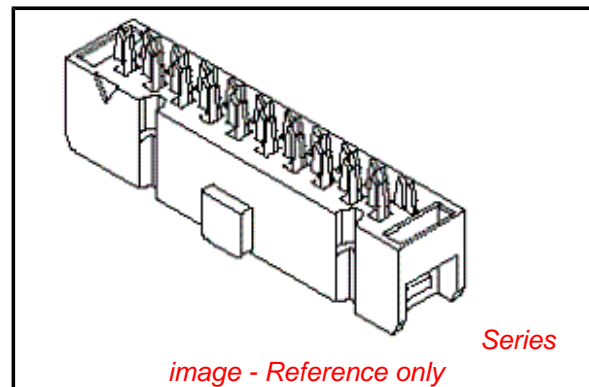
**Electrical**

Current - Maximum per Contact 1A  
 Voltage - Maximum 300V

**Material Info**

**Reference - Drawing Numbers**

Product Specification PS-54559-004, RPS-54559-008, RPS-54559-012, RPS-54559-014, RPS-54559-015  
 Sales Drawing SD-54559-003



**EU RoHS**

**ELV and RoHS Compliant**  
**REACH SVHC Contains SVHC: No**  
**Halogen-Free Status**  
**Not Reviewed**

**China RoHS**



**Need more information on product environmental compliance?**

Email [productcompliance@molex.com](mailto:productcompliance@molex.com)  
 For a multiple part number RoHS Certificate of Compliance, [click here](#)

Please visit the [Contact Us](#) section for any non-product compliance questions.

**Search Parts in this Series**

[54559Series](#)

**Mates With**

[55401](#) Vertical Header, [55638](#) Right Angle Header

**Use With**

[54561](#) Strain Relief, [54560](#) Upper Housing

**Application Tooling | FAQ**

*Tooling specifications and manuals are found by selecting the products below. Crimp Height Specifications are then contained in the Application Tooling Specification document.*

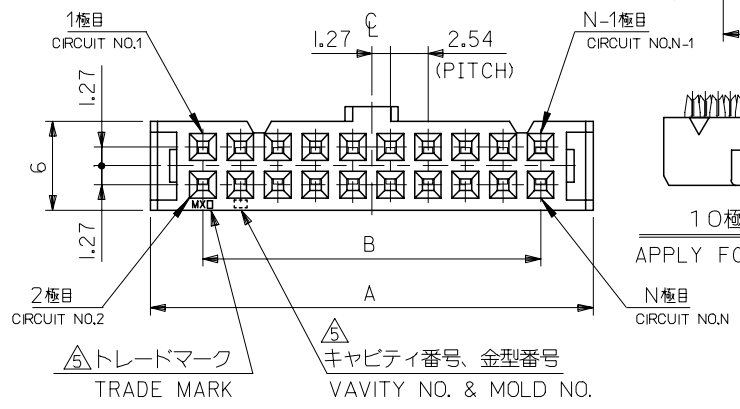
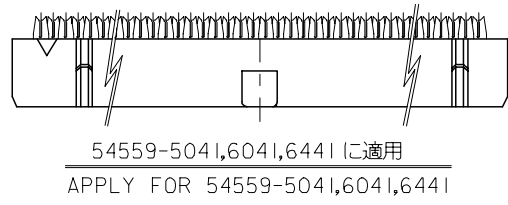
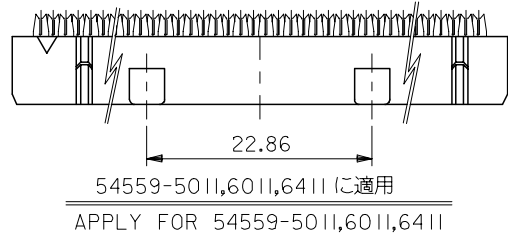
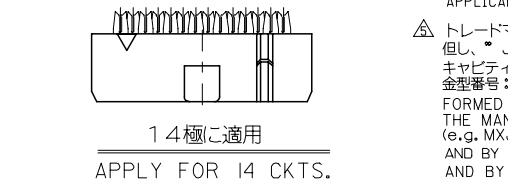
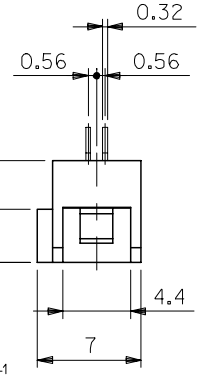
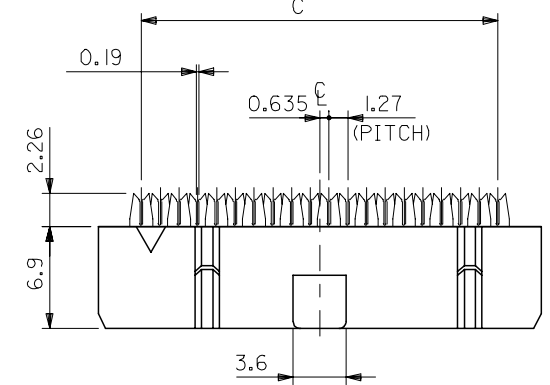
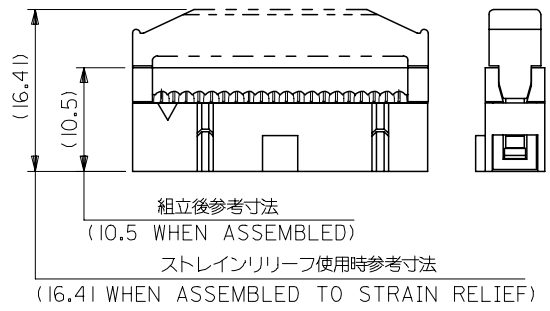
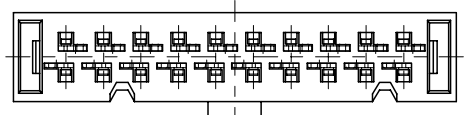
**Japan**

Description	Product #
IDT Hand Tool Assembly For MIL Connector	<a href="#">0572525000</a>
IDT Machine For MIL Connector	<a href="#">0572527000</a>

This document was generated on 04/07/2010

**PLEASE CHECK [WWW.MOLEX.COM](http://WWW.MOLEX.COM) FOR LATEST PART INFORMATION**

10 9 8 7 6 5 4 3 2 1



注記 NOTES

- 材料ハウジング : PBT (UL94V-0), 黒色  
ターミナル : リン青銅 (ツツケ下地金メッキ)  
MATERIAL HOUSING : PBT, UL 94V-0, BLACK  
TERMINAL : PHOS. BR. (AU PLATING, NI UNDER-PLATING)
- 適用電線 : 1.27ピッチリボンケーブル 被覆外径 :  $\phi 1.14$  MAX.  
より線 : AWG#28 (芯線7本構成)  
FOR USE WITH AWG#28 STRANDED WIRE (CONSISTS OF 7 CONDUCTORS)  
1.14 DIA. MAX. INSULATION RIBBON CABLE WITH 1.27 CENTERS.
- 嵌合相手 : 55401-\*\*\*11は54559-\*\*\*11に適用。  
55401-\*\*\*31は54559-\*\*\*41に適用。  
501577シリーズは54559-\*\*\*11に適用。  
55638-\*\*\*11は54559-\*\*\*11に適用。  
55638-\*\*\*31は54559-\*\*\*41に適用。  
MATE WITH : 55401-\*\*\*11 SUITS 54559-\*\*\*11  
55401-\*\*\*31 SUITS 54559-\*\*\*41  
501577 SERIES SUITS 54559-\*\*\*11  
55638-\*\*\*11 SUITS 54559-\*\*\*11  
55638-\*\*\*31 SUITS 54559-\*\*\*41.
- 適合アッパーハウジング : 54560-\*\*\*01  
APPLICABLE UPPER HSG : 54560-\*\*\*01  
適合ストレーンリリーフ : 54561-\*\*\*  
APPLICABLE STRAIN RELIEF : 54561-\*\*\*01

△トレードマーク : MXプラス製造工場を示すアルファベットにて構成  
但し、"J"はJAPANを示す。(例 MX J)  
キャビティ番号 : 数字で表示。  
金型番号 : アルファベットにて構成。  
FORMED BY MX AND ALPHABET WHICH MEAN THE MANUFACTORY, BUT "J" MEANS JAPAN. (TO TRADE MARK)  
(e.g. MXJ)  
AND BY NUMBERS (TO CAVITY NO.)  
AND BY ALPHABET (TO MOLD NO.)

C	B	A	MATERIAL NO.	CKT.
80.01	78.74	85.85	54559-6441	64
			54559-6411	
74.93	73.66	80.77	54559-6041	60
			54559-6011	
62.23	60.96	68.07	54559-5041	50
			54559-5011	
49.53	48.26	55.37	54559-4011	40
41.91	40.64	47.75	54559-3411	34
36.83	35.56	42.67	54559-3011	30
31.75	30.48	37.59	54559-2611	26
24.13	22.86	29.97	54559-2011	20
19.05	17.78	24.89	54559-1611	16
16.51	15.24	22.35	54559-1411	14
11.43	10.16	17.27	54559-1011	10
C	B	A	MATERIAL NO.	CKT.
MODEL NO. 54559-***11				

REVISED EC NO: J2007-2853 DRW: NABEI 2007/04/13 CHKD: YMAEDA 2007/04/13 APPR: NUKITA 2007/04/13	GENERAL TOLERANCES (UNLESS SPECIFIED)		DIMENSION STYLE MM ONLY		SCALE 3:1	DESIGN UNITS METRIC	THIRD ANGLE PROJECTION
	10 UNDER	±0.2	DRAWN BY S. MATSUZAKI	DATE '99/03/04	TITLE 2.54 FLAT CABLE CONN. REC HOUSING ASSY		
	10 OVER 30 UNDER	±0.25	CHECKED BY S. KUNISHI	DATE '03/08/06			
	30 OVER	±0.3	APPROVED BY T. YAMAGUCHI	DATE '03/08/06			
	ANGULAR	±3 °	MATERIAL NO.	DOCUMENT NO.			
DRAFT WHERE APPLICABLE MUST REMAIN WITHIN DIMENSIONS		SIZE A3	SEE CHART	SD-54559-003			