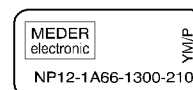
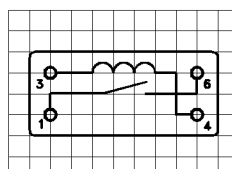
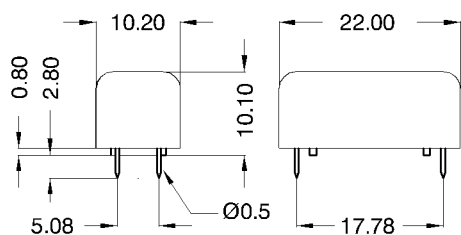


**DIMENSIONS (mm)**

**LAYOUT(210)**

**MARKING**

pitch 2.54 mm/Top view



Pins: Ø0.5 mm  
 L = 2.8±0.3 mm  
 Material: Cu-alloy tinned

MEDER-Label  
 Type  
 Production code,  
 EN60062/Factory code



| Coil Data at 20 °C | Conditions | Min   | Typ   | Max   | Unit |
|--------------------|------------|-------|-------|-------|------|
| Coil resistance    |            | 1.170 | 1.300 | 1.430 | Ohm  |
| Coil voltage       |            |       | 12    |       | VDC  |
| Rated power        |            |       | 110   |       | mW   |
| Pull-In voltage    |            |       |       | 8,4   | VDC  |
| Drop-Out voltage   |            | 1,8   |       |       | VDC  |

| Contact data 66            | Conditions  | Min | Typ | Max  | Unit |
|----------------------------|---|-----|-----|------|------|
| Contact-form               |   | A   |     |      |      |
| Contact rating             | Any DC combination of V & A not to exceed their individual max.'s |     |     | 10   | W    |
| Switching voltage (>20 AT) | DC or Peak AC   |     |     | 200  | V    |
| Switching current          | DC or Peak AC   |     |     | 0,5  | A    |
| Carry current              | DC or Peak AC   |     |     | 1,25 | A    |
| Contact resistance static  | Measured with 40% overdrive Start Value                           |     |     | 150  | mOhm |
| Contact resistance dynamic | Maximum value 1,5 ms after excitation Start Value                 |     |     | 200  | mOhm |
| Insulation resistance      | RH <45 %, 100 VDC test voltage                                    | 10  |     |      | GOhm |
| Breakdown voltage (>20 AT) | according to IEC 255-5  | 225 |     |      | VDC  |
| Operate time incl. bounce  | measured with 40% overdrive                                       |     |     | 0,5  | ms   |
| Release time               | measured with no coil excitation                                  |     |     | 0,1  | ms   |
| Capacity                   |   |     | 0,2 |      | pF   |

| Special Product Data               | Conditions                    | Min                  | Typ | Max | Unit  |
|------------------------------------|-------------------------------|----------------------|-----|-----|-------|
| Insulation resistance Coil/Contact | RH <45%, 200 VDC Messspannung | 10                   |     |     | GOhm  |
| Insulation voltage Coil/Contact    | gemäß IEC 255-5               | 2,12                 |     |     | kV DC |
| Housing material                   |                               | Metal                |     |     |       |
| Sealing compound                   |                               | Type PU E8702 FW-Z/W |     |     |       |

| Environmental data    | Conditions                  | Min          | Typ | Max | Unit |
|-----------------------|-----------------------------|--------------|-----|-----|------|
| Shock                 | 1/2 sine wave duration 11ms |              |     | 50  | g    |
| Vibration             | from 10 - 2000 Hz           |              |     | 20  | g    |
| Ambient temperature   |                             | -20          |     | 70  | °C   |
| Storage temperature   |                             | -25          |     | 85  | °C   |
| Soldering temperature | Wellenlöten max. 5 sec      |              |     | 260 | °C   |
| Cleaning              |                             | fully sealed |     |     |      |