

KEY FEATURES

- Switching Power Module for PCB Mountable
- Fully Encapsulated Plastic Case
- Universal Input Range 90-264VAC, 47-440 Hz
- Regulated Output and Low Ripple and Low Noise
- Isolation Class II
- Small Size: 2.0 x 1.0 x 0.597 Inches
- Screw Terminal For Optional
- CE, UL Approval
- 3-Years Product Warranty


ELECTRICAL SPECIFICATIONS

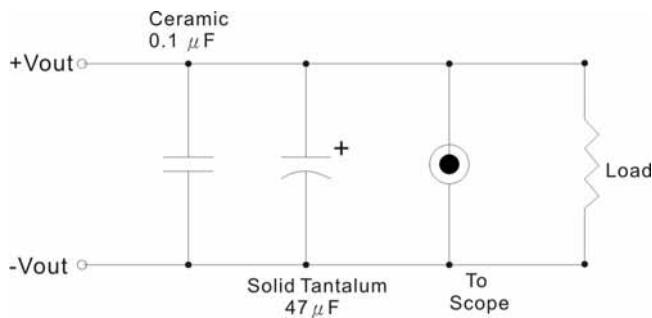
| Model No. | | AHC-3.3S-E1 | AHC-5S-E1 | AHC-12S-E1 | AHC-15S-E1 | AHC-24S-E1 |
|------------------------|-------------------------------------|---|-----------|------------|------------|------------|
| Max Output Wattage (W) | | 4W | 5W | 5W | 5W | 5.5W |
| Input | Voltage | 90-264 VAC or 120-370 VDC | | | | |
| | Frequency (Hz) | 47-440 Hz | | | | |
| | Current (Full load) | 110 mA max. (115 VAC) / 70 mA max. (230 VAC) | | | | |
| | Inrush Current (<2ms) | 23 A max. (115 VAC) / 46 A max. (230 VAC) | | | | |
| | Leakage Current | 0.75 mA max. | | | | |
| | External Fuse (recommend) | 1.5 A slow blow type | | | | |
| Output | Voltage (V.DC.) | 3.3V | 5V | 12V | 15V | 24V |
| | Voltage Accuracy | ±2% | | | | |
| | Current (mA) max | 1250 | 1000 | 420 | 333 | 230 |
| | Line Regulation (LL-HL) (typ.) | ±0.3%. | | | | |
| | Load Regulation (5-100%) (typ.) | ±0.5%. | | | | |
| | Minimum Load | 0% | | | | |
| | Maximum Capacitive Load | 13800 uF | 6000 uF | 1400 uF | 1000 uF | 170 uF |
| | Ripple | <0.2% Vout +40mV max (Vp-p) | | | | |
| | Noise | <0.5% Vout +50mV max (Vp-p) | | | | |
| | Efficiency | 68% | 71% | 75% | 75% | 77% |
| | Hold-up Time | 15 ms min. | | | | |
| | Switching Frequency | 132 kHz | | | | |
| Protection | Over Power Protection | Hiccup technique, auto-recovery | | | | |
| | Over Voltage Protection | Zener diode clamp | | | | |
| | Short Circuit Protection | Hiccup mode, indefinite (automatic recovery) | | | | |
| Isolation | Input-Output (V.AC) | 3000V | | | | |
| Environment | Operating Temperature | -40°C...+70°C (with derating) | | | | |
| | Storage Temperature | -40°C...+85°C | | | | |
| | Temperature Coefficient | ±0.02%/°C | | | | |
| | Humidity | 95% RH | | | | |
| | MTBF | >360,000 h @ 25°C (MIL-HDBK-217F) | | | | |
| Physical | Dimension (L x W x H) | 2.0 x 1.0 x 0.597 Inches (50.8 x 25.4 x 15.16 mm) Tolerance ±0.5 mm | | | | |
| | Case Material | Plastic resin with Fiberglass (flammability to UL 94V-0) | | | | |
| | Weight | 30 g | | | | |
| | Cooling Method | Free air convection | | | | |
| Safety | Agency Approvals | UL/cUL, CE | | | | |
| EMC | EMI (Conducted & Radiated Emission) | EN 55022 class B | | | | |
| | EMS (Noise Immunity) | EN 55024 | | | | |

1.All specifications valid at normal input voltage, full load and +25°C after warm-up time unless otherwise stated.

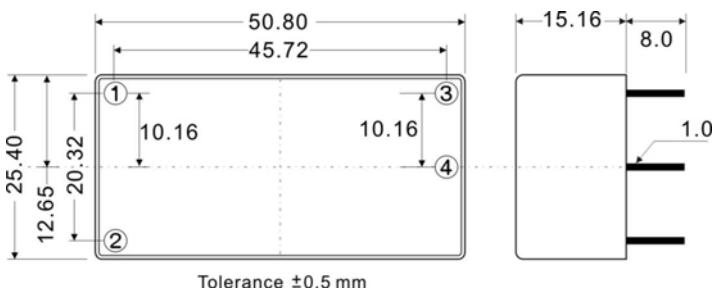
2.Ripple & Noise are measured at 20MHz of bandwidth with 0.1uF & 47uF parallel capacitor.

OUTPUT NOISE

The output noise is measured with 47 μ F tantalum capacitor and 0.1 μ F ceramic capacitor across output.

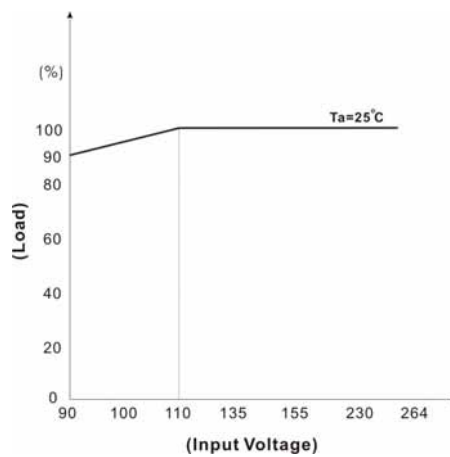
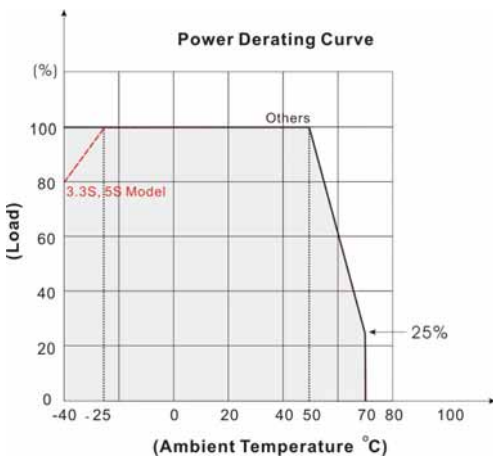


MECHANICAL DIMENSION (Top View)



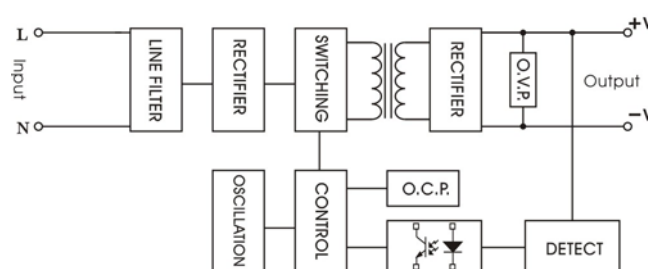
| PIN# | SINGLE |
|------|-----------|
| 1 | AC IN (N) |
| 2 | AC IN (L) |
| 3 | +DC OUT |
| 4 | -DC OUT |

DERATING



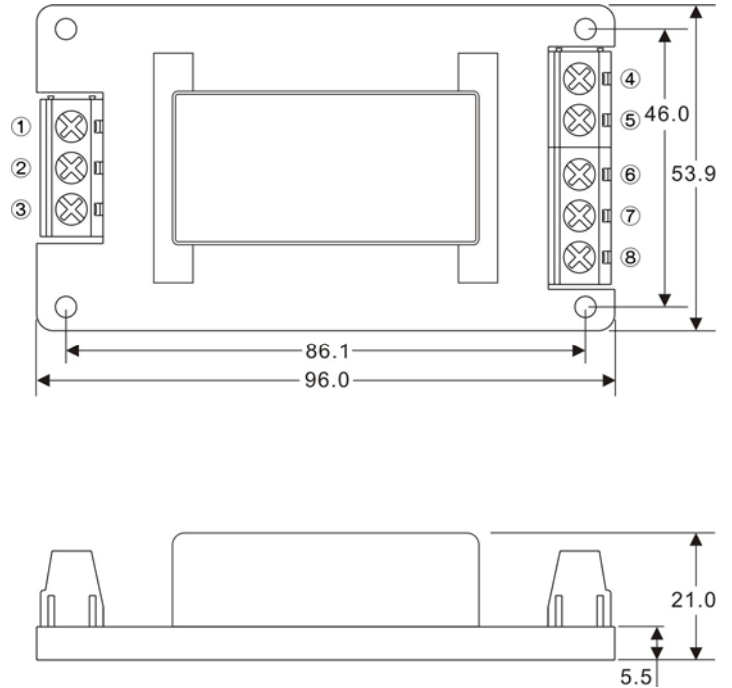
BLOCK DIAGRAM

Single Output



AHC-E1 SERIES
5 Watts
SCREW TERMINAL
AHC-E1-A2


| PIN# | Single |
|------|------------|
| 1 | NO CONNECT |
| 2 | AC IN (N) |
| 3 | AC IN (L) |
| 4 | NO CONNECT |
| 5 | +DC OUT |
| 6 | -DC OUT |
| 7 | NO CONNECT |
| 8 | NO CONNECT |


AHC- E1-A5


| PIN# | Single |
|------|------------|
| 1 | NO CONNECT |
| 2 | AC IN (N) |
| 3 | AC IN (L) |
| 4 | NO CONNECT |
| 5 | +DC OUT |
| 6 | -DC OUT |
| 7 | NO CONNECT |
| 8 | NO CONNECT |

