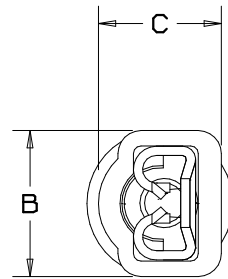
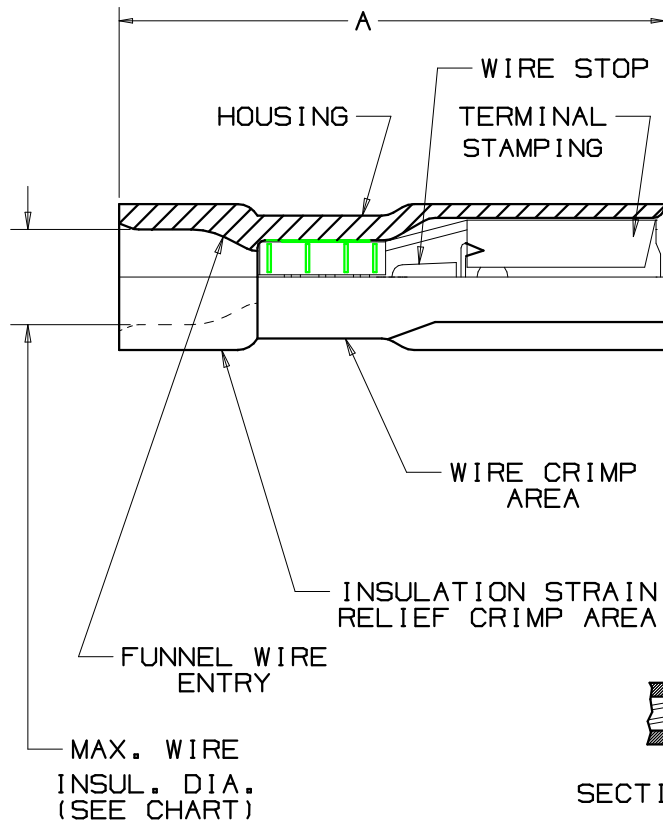
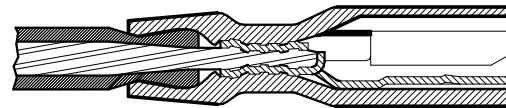


THIS COPY IS PROVIDED ON A RESTRICTED BASIS AND IS NOT TO BE USED IN ANY WAY DETRIMENTAL TO THE INTERESTS OF PANDUIT CORP.



NOTES:

1. UL LISTED AND CSA CERTIFIED FOR:
 - A. 600V MAX VOLTAGE RATING
 - B. 221°F (105°C) MAX TEMP RATING
 - C. STRANDED COPPER WIRE ONLY
 - D. 6-12 LBS INITIAL INSERTION/WITHDRAWAL FORCE
2. PACKAGE QTY: -M=1000 PIECES, -C=100 PIECES
3. MATERIAL:
 - A. STAMPING-CDA 260 BRASS, TIN PLATED
 - B. HOUSING-PREMIUM GRADE NYLON FOR SUPERIOR STRAIN RELIEF INSULATION CRIMPING
4. DIMENSIONS IN BRACKETS ARE IN mm OR mm²
5. NYLON HOUSING IS OPAQUE
6. WIRE STRIP LENGTH: $7/32'' + .1/32''$ ($5.6 + .0.8$)



SECTION VIEW OF CRIMPED DISCONNECT



LISTED
20H3
E78522



CERTIFIED
LR31212

PART NUMBER	PKG. SUFFIX	TAB SIZE	WIRE RANGE AWG (MM)	COLOR (note 5)	MAX. INSUL. DIA.	MIN. INSUL. DIA.	DIMENSIONS in.			TOOL CHART
							A ±.02	B ±.01	C ±.02	
DPF18-110F1B	-C -M	.110 X .032 (2,8 X 0,8)	22-18 (0,5-1,0)	RED	.132 (3,35)	.080 (2,03)	.71 (18,0)	.19 (4,83)	.16 (4,06)	CT-520 CT-1525 (USE POCKET "A")
DPF18-111F1B	-C -M	.110 X .020 (2,8 X 0,5)	22-18 (0,5-1,0)	RED	.132 (3,35)	.080 (2,03)	.71 (18,0)	.19 (4,83)	.16 (4,06)	

REV	DATE	BY	CHK	DESCRIPTION	ECN#	CUST	PM
07	2/07	DAW	DAW	ADDED POCKET "A" NOTE TO CT-1525	TR00220	LCA	TRO
06	7/03	KLFU	SKB	UPDATED GEOMETRY WIRE RANGE WAS 0,5-1,5	12453	LCA	TRO
05	1/01	RM	SKB	FILESPEC WAS N41464AA_PCD_04	8933	JAC	CCH
04		JKD		ADDED CT-1525 TOOL	07632		
03	10/96	TM	RLS	UPDATED NOTES AND DIMENSIONS	05139	LA	DBH

PANDUIT

CORP.

TINLEY PARK, ILLINOIS

DISCOGRIP™ LOOSE PIECE
FULLY INSULATED FEMALE DISCONNECTS
.110 X .032, .110 X .020

DRAWN BY RPH	CHK'D	SCALE NONE	DRAWING NO./CAD FILENAME A41464
-----------------	-------	---------------	------------------------------------

A41464_07