

PRODUCT NUMBER

77313-YXX-XXLF

WHEN REQUIRED, ADD SUFFIX LETTER "LF"  
INDICATES THE PRODUCT IS RoHS  
COMPATIBLE, SEE NOTE 7

TOTAL NB OF POSITIONS 04 TO 72

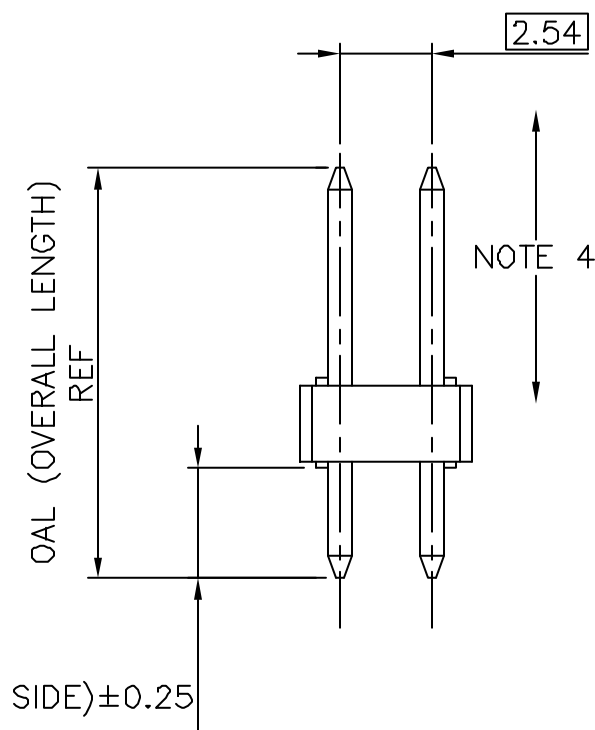
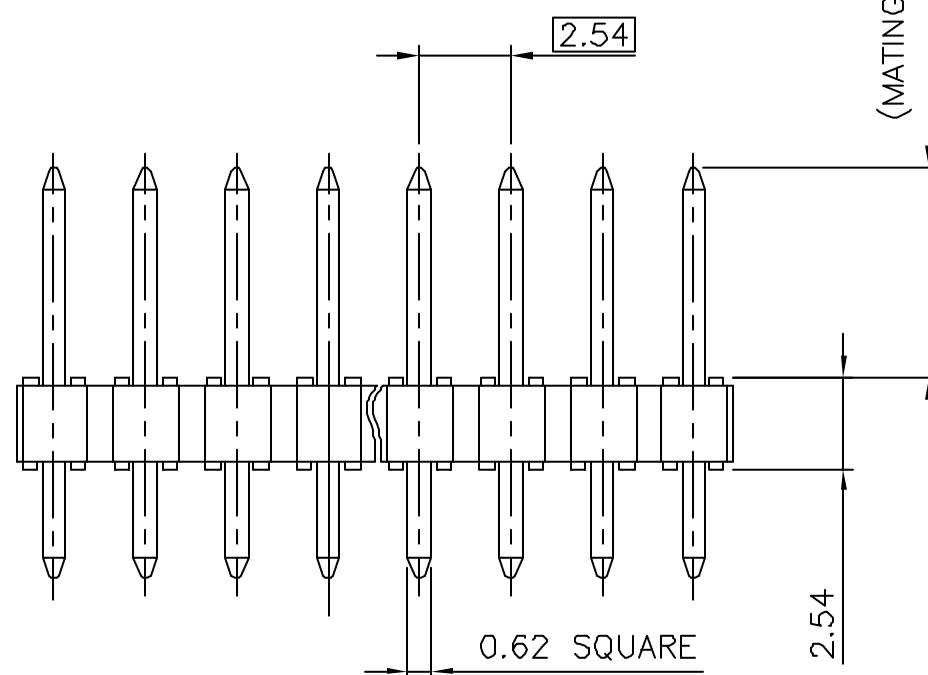
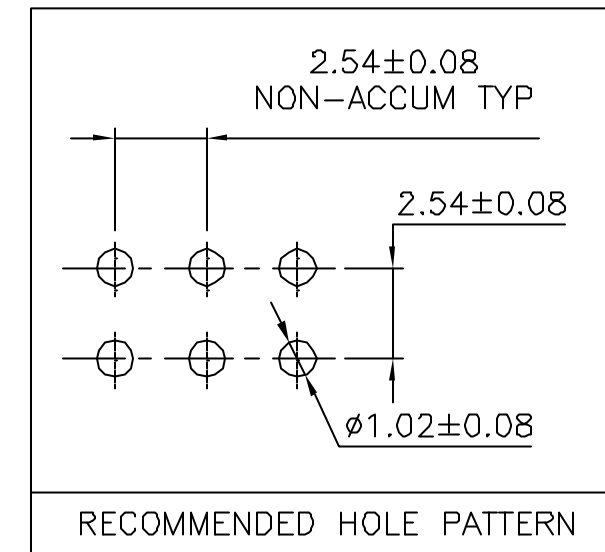
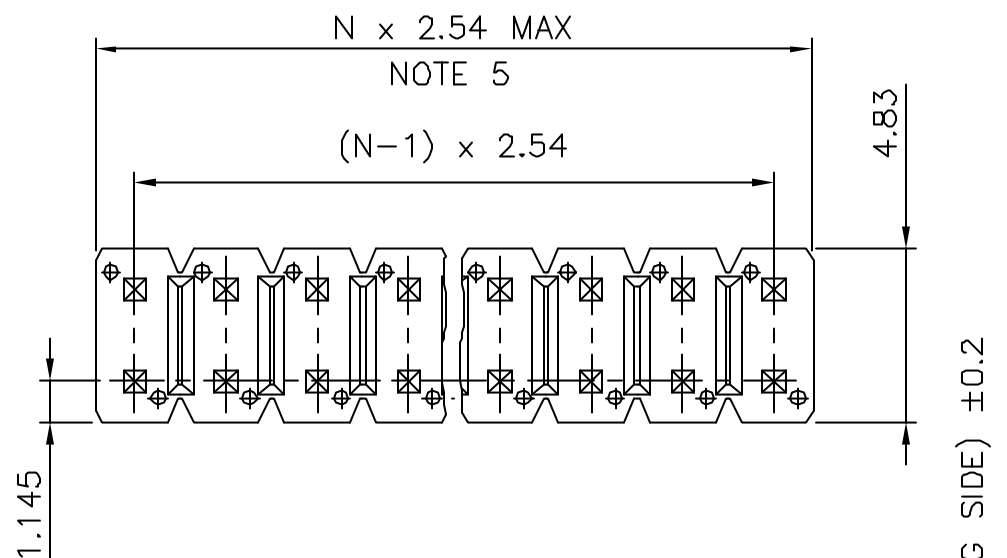
RETENTION OPTION "R"  
SEE SHEET 2

PIN STYLE SEE SHEET 2

PLATING SEE SHEET 2

NOTES:

1. HOUSING MAT'L : HIGH TEMPERATURE THERMOPLASTIC. UL94V-0 COLOR: BLACK
2. PIN MATERIAL : PHOSPHOR BRONZE
3. PRODUCT PACKAGED IN POLY BAGS.
4. 9N MIN RETENTION IN EITHER DIRECTION
5. TO DETERMINE DIMENSIONS :  
N = NUMBER OF POSITIONS PER ROW  
EXAMPLE : 8 POS N x 2.54 = 20.32mm
6. UNDERPLATING : 1.27µm Ni MIN
7. RoHS COMPATIBLE PRODUCT SPECIFICATIONS
  - a - PLATING:
    - "LF" MEANS THE PRODUCT IS LEAD-FREE, 2µm MINIMUM MATTE TIN OVER 1.27µm MINIMUM NICKEL UNDERPLATE.
  - b - MANUFACTURING PROCESS COMPATIBILITY
    - THE HOUSING WILL WITHSTAND EXPOSURE TO 260°C ±5°C SOLDER BATH TEMPERATURE FOR 5 SECONDS IN A WAVE SOLDER APPLICATION WITH A 1.6mm MIN THICK CIRCUIT BOARD.
  - c - LABELING:
    - MEETS PACKAGING SPECS AS PER GS-14-920
  - d - LEGAL STATEMENT: SEE GS-22-008



mat'l. code				surface		tolerance		projection		product family	
SEE NOTES				ISO 1302		ISO 406 ISO 1101		mm		BERGSTIK	
ltr	ecn	no	dr	date	tolerances unless otherwise specified		mm		title		
AY	F07-0114	LMU	07.01.24	07.01.24	angles	.x ±0.3	mm		UNSHR.HEADER		
BA	F07-0125	LMU	07.02.05	07.02.05	Linear	.xx ±0.15	mm		STR DR TMT		
						.xxx ±0.05	scale 5:1		dwg no		
AU	F05-0226	LMU	05.08.23	05.08.23	dr	D.LE	01.01.24	FCI		sheet 1 of 2	size
AV	F06-0167	LMU	06.04.19	06.04.19	enrg	JM.C	01.01.24			77313	A3
AW	F06-0196	LMU	06.06.20	06.06.20	chr	JM.C	01.01.24			type	
AX	F07-0110	LMU	07.01.17	07.01.17	appd	JF.N	01.01.24			CUSTOMER	Drawing
sheet index	revision	BA	AV								
	sheet	1	2								

CORE RANGE				
PLATING	PIN STYLE	MATING	SOLDER	OAL
1	01	5.84	2.41	10.8
1	18	5.84	3.05	11.43

PLATING  
 1 = 0.76µm GOLD ON CONTACT AREA  
 3.81µm TIN-LEAD ON TAIL  
 - WHEN "LF" IS REQUIRED, 2µm MATTE TIN OVER 1.27µm MIN NICKEL IS PROVIDED INSTEAD OF TIN-LEAD

CATALOGUE RANGE				
PLATING	PIN STYLE	MATING	SOLDER	OAL
4/8	01	5.84	2.41	10.8
1/4/8	02	5.84	3.42	11.8
4/8	18	5.84	3.05	11.43
1/4/8	22	7.75	3.05	13.35
1/4/8	24	6.75	2.9	12.2
1/4/8	27	6.6	2.65	11.8

PLATING  
 1 = 0.76µm GOLD ON CONTACT AREA  
 3.81µm TIN-LEAD ON TAIL  
 4 = 3.81µm TIN-LEAD ON CONTACT AREA AND ON TAIL  
 8 = 0.38µm GOLD ON CONTACT AREA  
 3.81µm TIN-LEAD ON TAIL  
 - WHEN "LF" IS REQUIRED, 2µm MATTE TIN OVER 1.27µm MIN NICKEL IS PROVIDED INSTEAD OF TIN-LEAD

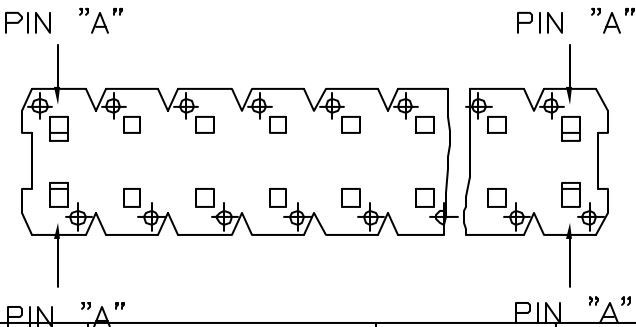
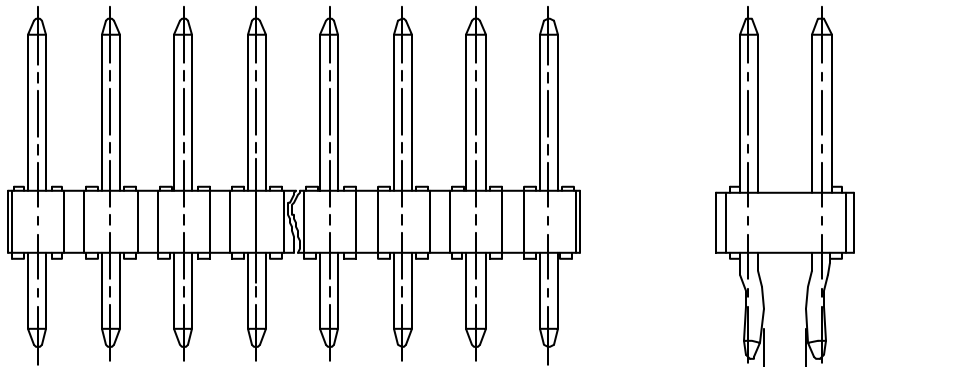
APPLICATION SPECIFIC				
PLATING	PIN STYLE	MATING	SOLDER	OAL
1/4/8	03	5.72	5.09	13.35
1/4/8	15	8.51	2.55	13.6
1/4/8	19	12.83	3.03	18.4
1/4/8	20	15.37	3.04	20.95
1/4/8	29	17.46	3.50	23.5
1/4/8	38	5.84	3.82	12.20
1/4/8	46	8.08	2.98	13.6
1/4/8	52	9.5	3.05	15.09
1/4/8	57	8.46	3.05	14.05
1/4/8	58	14.47	3.05	20.06
1/4/8	85	10.5	2.9	15.9
1/4/8	87	6.98	3.05	12.57
1/4/8	89	6.93	5.00	14.47
1/4/8	90	6.75	4.05	13.34
1/4/8	91	5.60	10.21	18.4
1/4/8	92	5.65	12.76	20.95
1/4/8	93	6.00	4.81	13.35

PLATING  
 1 = 0.76µm GOLD ON CONTACT AREA  
 3.81µm TIN-LEAD ON TAIL  
 4 = 3.81µm TIN-LEAD ON CONTACT AREA AND ON TAIL  
 8 = 0.38µm GOLD ON CONTACT AREA  
 3.81µm TIN-LEAD ON TAIL  
 - WHEN "LF" IS REQUIRED, 2µm MATTE TIN OVER 1.27µm MIN NICKEL IS PROVIDED INSTEAD OF TIN-LEAD

NOTES:

- PART NUMBER 77313-YXXRXX(LF)
- 4 PINS "A" USED FOR RETENTION  
DIRECTION OF RETENTION SHOWN BY ARROWS  
PIN "A" AT EACH END OF HEADER.
- FOR RETENTION OPTION , SOLDER TAIL LENGTH TO BE 2.9 MIN UP TO 3.5 MAX.

RETENTION OPTION



mat'l. code		surface ISO 1302		tolerance ISO 406 ISO 1101		projection		product family BERGSTIK	
ltr		ecn no		dr		date		title	
AN		F04-0362		LMU		04.11.27		UNSHR.HEADER	
AP		F05-0226		LMU		05.08.23		STR DR TMT	
AR		F06-0167		LMU		06.04.19		dwg no	
AS		F06-0196		LMU		06.06.20		sheet 2 of -	
AT		F07-0110		LMU		07.01.17		size	
AU		F07-0114		LMU		07.01.24		77313	
AV		F07-0125		LMU		07.02.05		A3	
sheet index		revision sheet		D.LE		01.01.24		type	
				engr		JM.C		CUSTOMER	
				chr		JM.C		Drawing	
				appd		JF.N			



Copyright FCI